

ab112116

**Cell Cycle Assay Kit –
Green Fluorometric**

Instructions for Use

For monitoring cell cycle progression and proliferation in permeabilized and fixed cells using our proprietary Nuclear Green CCS1

This product is for research use only and is not intended for diagnostic use.

Table of Contents

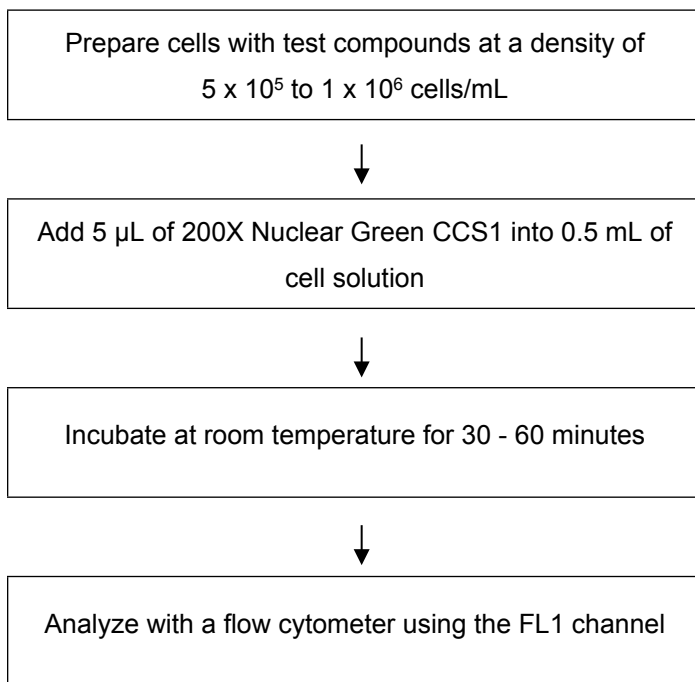
1. Introduction	3
2. Protocol Summary	4
3. Kit Contents	5
4. Storage and Handling	5
5. Assay Protocol	5
6. Data Analysis	7

1. Introduction

The cell cycle has four sequential phases: G0/G1, S, G2, and M. During a cell's passage through cell cycle, its DNA is duplicated in S (synthesis) phase and distributed equally between two daughter cells in M (mitosis) phase. These two phases are separated by two gap phases: G0/G1 and G2. The two gap phases provide time for the cell to grow and double the mass of their proteins and organelles. They are also used by the cells to monitor internal and external conditions before proceeding with the next phase of cell cycle. The cell's passage through cell cycle is controlled by a host of different regulatory proteins.

ab112116 is designed to monitor cell cycle progression and proliferation by using our proprietary Nuclear Green CCS1 in permeabilized and fixed cells. The percentage of cells in a given sample that are in G0/G1, S and G2/M phases, as well as the cells in the sub-G1 phase prior to apoptosis can be determined by flow cytometry. Cells stained with the Nuclear Green CCS1 can be monitored with a flow cytometer at Ex/Em = 490 nm/520 nm (FL1 channel).

2. Protocol Summary



Note: Thaw all the kit components to room temperature before starting the experiment.

3. Kit Contents

Components	Amount
Component A: 200X Nuclear Green CCS1	1 x 250 μ L
Component B: Assay Buffer	1 x 50 mL

4. Storage and Handling

Keep at -20°C. Avoid exposure to light.

5. Assay Protocol

Note: *This protocol is for each sample.*

- A. For each sample, prepare cells in 0.5 mL of warm medium or buffer of your choice at a density of 5×10^5 to 1×10^6 cells/mL.

Note: Each cell line should be evaluated on an individual basis to determine the optimal cell density for apoptosis induction.

- B.** Treat cells with test compounds for a desired period of time to induce apoptosis or other cell cycle functions.
- C.** Add 2.5 μ L of 200X Nuclear Green CCS1 (Component A), and incubate the cells in a 37 °C, 5% CO₂ incubator for 30 to 60 minutes.

Note 1: For adherent cells, gently lift the cells with 0.5 mM EDTA to keep the cells intact, and wash the cells once with serum-containing media prior to incubation with Nuclear Green CCS1.

Note 2: The appropriate incubation time depends on the individual cell type and cell concentration used. Optimize the incubation time for each experiment.

Note 3: It is not necessary to fix the cells before DNA staining since the Nuclear Green CCS1 is cell- permeable.

- D.** Optional: Centrifuge the cells at 1000 rpm for 4 minutes, and then re-suspend cells in 0.5 mL of Assay Buffer (Component B) or the buffer of your choice.
- E.** Monitor the fluorescence intensity by flow cytometry using the FL1 channel (Ex/Em = 490/525 nm). Gate on the cells of interest, excluding debris.

6. Data Analysis

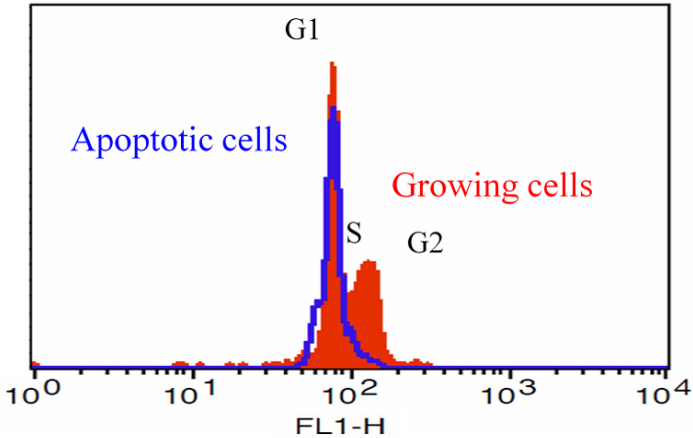


Figure 1. DNA profile in growing and camptothecin treated Jurkat cells. Jurkat cells were treated without (red) or with 20 μM camptothecin (blue) in a 37 $^{\circ}\text{C}$, 5% CO_2 incubator for about 8 hours, and then dye loaded with Nuclear Green CCS1 for 60 minutes. The fluorescence intensity of Nuclear Green CCS1 was measured with a flow cytometer using the FL1 channel. In growing Jurkat cells, nuclear stained with Nuclear Green CCS1 shows G1, S and G2 phases (red). In camptothecin treated apoptotic cells (B), the fluorescence intensity of Nuclear Green CCS1 was decreased, and both S and G2 phases were diminished.

For technical questions please do not hesitate to contact us by email (technical@abcam.com) or phone (select “*contact us*” on www.abcam.com for the phone number for your region).

UK, EU and ROW

Email:

technical@abcam.com

Tel: +44 (0)1223 696000

www.abcam.com

US, Canada and Latin America

Email: us.technical@abcam.com

Tel: 888-77-ABCAM (22226)

www.abcam.com

China and Asia Pacific

Email: hk.technical@abcam.com

Tel: 108008523689 (中國聯通)

www.abcam.cn

Japan

Email: technical@abcam.co.jp

Tel: +81-(0)3-6231-0940

www.abcam.co.jp