

Product datasheet

Anti-Beclin 1 antibody [2A4] ab114071

★★★★★ 5 Abreviews 16 References 3 Images

Overview

Product name	Anti-Beclin 1 antibody [2A4]
Description	Mouse monoclonal [2A4] to Beclin 1
Host species	Mouse
Tested applications	Suitable for: WB, IHC-P, Flow Cyt
Species reactivity	Reacts with: Human
Immunogen	Recombinant fragment corresponding to Human Beclin 1 aa 51-248. Database link: Q14457
Positive control	WB: HeLa; A431; MCF7; RAJ; Jurkat and SKBR3 cell lysates IHC-P: Breast cancer and liver cancer tissues
General notes	<p>Reproducibility is key to advancing scientific discovery and accelerating scientists' next breakthrough.</p> <p>Abcam is leading the way with our range of recombinant antibodies, knockout-validated antibodies and knockout cell lines, all of which support improved reproducibility.</p> <p>We are also planning to innovate the way in which we present recommended applications and species on our product datasheets, so that only applications & species that have been tested in our own labs, our suppliers or by selected trusted collaborators are covered by our Abpromise™ guarantee.</p> <p>In preparation for this, we have started to update the applications & species that this product is Abpromise guaranteed for.</p> <p>We are also updating the applications & species that this product has been “predicted to work with,” however this information is not covered by our Abpromise guarantee.</p> <p>Applications & species from publications and Abreviews that have not been tested in our own labs or in those of our suppliers are not covered by the Abpromise guarantee.</p> <p>Please check that this product meets your needs before purchasing. If you have any questions, special requirements or concerns, please send us an inquiry and/or contact our Support team ahead of purchase. Recommended alternatives for this product can be found below, as well as customer reviews and Q&As.</p>

Properties

Form	Liquid
-------------	--------

Storage instructions	Shipped at 4°C. Upon delivery aliquot and store at -20°C. Avoid repeated freeze / thaw cycles.
Storage buffer	Preservative: 0.05% Sodium azide Constituent: PBS
Purity	Protein G purified
Purification notes	Purified from tissue culture supernatant.
Clonality	Monoclonal
Clone number	2A4
Isotype	IgG1

Applications

Our [Abpromise guarantee](#) covers the use of **ab114071** in the following tested applications.

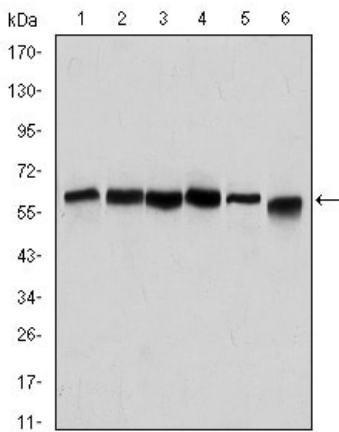
The application notes include recommended starting dilutions; optimal dilutions/concentrations should be determined by the end user.

Application	Abreviews	Notes
WB	★★★★☆	1/500 - 1/2000. Predicted molecular weight: 60 kDa.
IHC-P		1/200 - 1/1000.
Flow Cyt		1/200 - 1/400. ab170190 - Mouse monoclonal IgG1, is suitable for use as an isotype control with this antibody.

Target

Function	Plays a central role in autophagy (By similarity). May play a role in antiviral host defense. Protects against infection by a neurovirulent strain of Sindbis virus.
Tissue specificity	Ubiquitous.
Sequence similarities	Belongs to the beclin family.
Cellular localization	Golgi apparatus > trans-Golgi network membrane. Interaction with ATG14 promotes translocation to autophagosomes. Expressed in dendrites and cell bodies of cerebellar Purkinje cells.

Images



Western blot - Anti-Beclin 1 antibody [2A4] (ab114071)

All lanes : Anti-Beclin 1 antibody [2A4] (ab114071) at 1/500 dilution

Lane 1 : Hela cell lysate

Lane 2 : A431 cell lysate

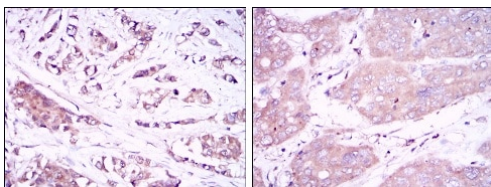
Lane 3 : MCF7 cell lysate

Lane 4 : Raji cell lysate

Lane 5 : Jurkat cell lysate

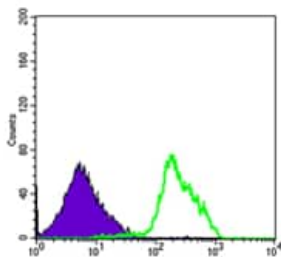
Lane 6 : SKBR3 cell lysate

Predicted band size: 60 kDa



Immunohistochemistry (Formalin/PFA-fixed paraffin-embedded sections) - Anti-Beclin 1 antibody [2A4] (ab114071)

Immunohistochemical analysis of Beclin 1 expression in paraffin embedded breast cancer tissues (left) and liver cancer tissues (right) using ab114071 at 1/200 dilution with DAB staining



Flow Cytometry - Anti-Beclin 1 antibody [2A4] (ab114071)

Flow cytometric analysis of RAJI cells using Beclin 1 mouse mAb (green) and negative control (purple).

Please note: All products are "FOR RESEARCH USE ONLY. NOT FOR USE IN DIAGNOSTIC PROCEDURES"

Our Abpromise to you: Quality guaranteed and expert technical support

- Replacement or refund for products not performing as stated on the datasheet
- Valid for 12 months from date of delivery
- Response to your inquiry within 24 hours

- We provide support in Chinese, English, French, German, Japanese and Spanish
- Extensive multi-media technical resources to help you
- We investigate all quality concerns to ensure our products perform to the highest standards

If the product does not perform as described on this datasheet, we will offer a refund or replacement. For full details of the Abpromise, please visit <https://www.abcam.com/abpromise> or contact our technical team.

Terms and conditions

- Guarantee only valid for products bought direct from Abcam or one of our authorized distributors