

Mouse Monoclonal Antibody to

LC3 (microtubule-associated protein1 light chain 3B) clone 2G6

Order No.: 0260-100/LC3-2G6
Size (µg) 100
Lot No.: 0260S



www.nanotools.de

orders & support:

email: info@nanotools.de
phone: +49-7641-455 670
fax: +49-7641-455 671

09/311013F

| Isotype | Species Reactivity | Applications | Mol. Weight | Ref.Cell Line | Epitope | Immunogen |
|---------|------------------------------------|--------------|------------------------------|---------------|---------------------|--|
| IgG1 | human, mouse, rat, monkey, hamster | WB, ICC | LC3-I: 18kDa LC3-II:16kDa | Neuro 2A | N-terminus of LC3-B | synthetic peptide conjugated to hemocyanin |

Background and Specificity:

Autophagy is an alternative process of proteasomal degradation for some long-lived proteins or organelles. Alterations in the autophagic-lysosomal compartment have been linked to neuronal death in many neurodegenerative disorders as well as in transmissible neuronal pathologies (prion diseases). Genetic studies in yeast have shown that Autophagy-defective Gene-8 (Atg-8) represents a specific marker for autophagy. Among the four families of mammalian Atg8-related proteins only LC3 (microtubule-associated protein1 light chain 3) is expressed at sufficient high levels and efficiently recruited to autophagic vesicles in cells and tissues. During autophagy the cytoplasmic form, LC3-I is processed and recruited to autophagosomes, where LC3-II is generated by site specific proteolysis near to the C-terminus. Autophagic vacuoles have been also reported frequently in cardiomyopathies or muscle cells exposed to different experimental settings.

Mab LC3-2G6 specifically recognizes both forms of endogenous LC3, the cytoplasmic LC3-I (18 kDa) as well as the lipidated form generated during autophagosome and autophagolysosome formation: LC3-II (16 kDa).

NOTE: We strongly recommend to use PVDF membranes for immunoblot analysis.

| | |
|------------------------|---|
| Purification: | The antibody was purified from serum-free cell culture supernatant by subsequent ultrafiltration and size exclusion chromatography. |
| Formulation: | liquid; 0.1mg/ml in in PBS/0.09% Na-Azide/PEG and Sucrose/50% Glycerol |
| Reconstitution: | |
| Stability: | Aliquote and store at -20°C up to 1 year |

Positive Control: #1041/PC3/LC3I and #1042/PC3/LC3II positive controls

Immunoblotting: 0.5 µg/ml for HRPO/ECL detection
Recommended blocking buffer: Casein/Tween 20 based blocking and blot incubation buffer, e.g. nanoTools product #3031-500/CPPT or #3031-3000/CPPT.

Immunoprecipitation: ND

Immunocytochemistry: Use at 1- 10 µg/ml (paraformaldehyd/methanol fixation)

ELISA: ND

All products are supplied for research and investigational use only. Not for use in humans or laboratory animals.

Related Products

mab to LC3

#0231-100/LC-3-5F10

mab to LC3

#0261-100/LC3-5H3

mab to Beclin

#0240-100/Beclin-12B4

Alzheimer Disease

mab to βA4 (1-40), C-Terminus

#0060-100/bA4(40)-5C3

mab to βA4 (1-42), C-Terminus

#0061-100/bA4(42)-8G7

mab to βA4 (1-40/42), C-Terminus

#0062-100/bA4(40/42)-9F1

mab to βA4 (1-43), C-Terminus

#0095-100/bA4(43)-6G12

mab to βA4, N-Terminus

#0064-100/bA4N-19H5

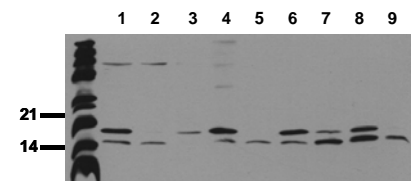
mab to βA4, N-Terminus

#0084-100/bA4N-19H11

mab to βA4, N-Terminus

#0197-100/bA4N-11H3

For monoclonal antibodies against PKB/akt, and SAPK/jnk, please refer to our website at www.nanotools.de



Detection of endogenous LC-3

Whole cell lysates of untreated tumor cells were applied to SDS-PAGE and transferred to a PVDF membrane. The immunoblot was probed with mab LC3 - 2G6 (0.5 µg/ml) for 1h at RT and developed by ECL (exp. time: 30 sec).

lane 1: HeLa; lane 2: HepG2; lane 3: HEK 293; lane 4: SH-SY5Y; lane 5: MDCK; lane 6: PC12; lane 7: CMT; lane 8: Neuro2A; lane 9: NIH - 3T3