



HOME

Product category

Custom services

Learn

Download

Contact

HOME > Product search results > Code No. M186-3 Anti-LC3 mAb

Code No. M186-3 WB IP



Anti-LC3 mAb



Citations

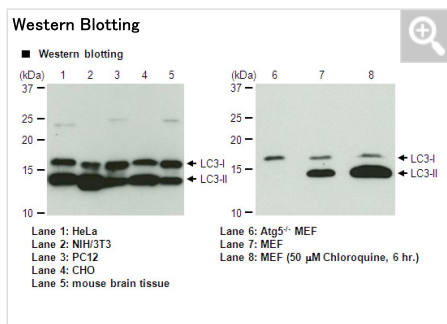


Data Sheet



SDS

Data



Price

¥48,000

Availability (in Japan)

10 or more

(In Japan at 00:05,
May 21, 2019 in JST)

Size

100 μg/100 μL

FAQ



Clonality Monoclonal Clone 8E10

Isotype (Immunized Animal) Mouse IgG2a κ

Applications WB 1 μg/mL [Publications ▶](#)
IP* reported. (PMID: 28924380) [Publications ▶](#)

Immunogen (Antigen) Human LC3, 1-120 aa Recombinant protein

Reactivity [Gene ID] Human[81631], Mouse[67443], Rat[64862], Hamster[100769810]

Storage buffer 1 mg/mL in PBS/50% glycerol, pH 7.2

Storage temp. -20° C Conjugate Unlabeled Manufacturer MBL

Alternative names microtubule-associated protein 1 light chain 3 beta, LC3B, ATG8F, MAP1LC3B-a, MAP1A/1BLC3, MAP1LC3B

PM036 Anti-LC3 pAb
M152-3 Anti-LC3 mAb
PD014 Anti-LC3 pAb
PM045 Anti-p62 (SQSTM1) pAb
M162-3 Anti-p62 (SQSTM1) (Human) mAb
PM066 Anti-p62 C-terminal pAb
PM072 Anti-VMP1 pAb
PD017 Anti-Becclin 1 pAb
PM037 Anti-GABARAP pAb
M135-3 Anti-GABARAP mAb
PM038 Anti-GATE-16 pAb
M133-3 Anti-Atg3 mAb
PM039 Anti-Atg7 (Human) pAb
8485 Autophagy Ab Sampler Set
PM036-PN Positive control for anti-LC3 antibody
PM090 Anti-Atg8 (Filamentous fungi) pAb
M152-3MS Anti-LC3 mAb for My select sampler set
M200-3MS Anti-NRF2 mAb for My select sampler set
M134-3 Anti-Atg4B mAb
M154-3 Anti-Atg12 (Human) mAb
M162-A48 Anti-p62 (SQSTM1) (Human) mAb-Alexa Fluor® 488
M162-A59 Anti-p62 (SQSTM1) (Human) mAb-Alexa Fluor® 594
M162-A64 Anti-p62 (SQSTM1) (Human) mAb-Alexa Fluor® 647
M186-7 Anti-LC3 mAb-HRP-Direct
M186-7MS Anti-LC3 mAb-HRP-Direct for My select sampler set
M200-3 Anti-NRF2 mAb

Notes Clone 8E10 reacts with LC3B and does not cross-react with LC3A, LC3C, GATE-16, and GABARAP.

Citations Western Blotting

- Margariti A *et al.* XBP1 mRNA splicing triggers an autophagic response in endothelial cells through BECLIN-1 transcriptional activation. *J Biol Chem* 288, 859–72 (2013)(PMID:23184933)
- Mukai R *et al.* HTLV-1 HBZ positively regulates the mTOR signaling pathway via inhibition of GADD34 activity in the cytoplasm. *Oncogene*. 33, 2317–28 (2014)(PMID:23708656)
- Maejima Y *et al.* Mst1 inhibits autophagy by promoting the interaction between Beclin1 and Bcl-2. *Nat Med*. 19, 1478–88 (2013)(PMID:24141421)
- Wang M *et al.* EGFR-mediated chromatin condensation protects KRAS-mutant cancer cells against ionizing radiation. *Cancer Res*. 74, 2825–34 (2014)(PMID:24648348)
- He R *et al.* Divergent roles of BECN1 in LC3 lipidation and autophagosomal function. *Autophagy* 11, 740–7 (2015) (PMID:25955014)
- Hasegawa K *et al.* Promotion of mitochondrial biogenesis by necdin protects neurons against mitochondrial insults. *Nat Commun*. 7, 10943 (2016)(PMID:26971449)
- Li Z *et al.* Ammonia Induces Autophagy through Dopamine Receptor D3 and MTOR. *PLoS One* 11, e0153526 (2016) (PMID:27077655)
- Nakanishi T *et al.* Relationship between triterpenoid anticancer drug resistance, autophagy, and caspase-1 in adult T-cell leukemia. *PeerJ* 12, e2026 (2016)(PMID:27190722)
- Boada-Romero E *et al.* The T300A Crohn's disease risk polymorphism impairs function of the WD40 domain of ATG16L1. *Nat Commun*. 7, 11821 (2016)(PMID:27273576)
- Sasaki N *et al.* Chorein interacts with α -tubulin and histone deacetylase 6, and overexpression preserves cell viability during nutrient deprivation in human embryonic kidney 293 cells. *FASEB J*. 30, 3726–3732 (2016)(PMID:27468757)
- Maueröder C *et al.* Capability of Neutrophils to Form NETs Is Not Directly Influenced by a CMA-Targeting Peptide. *Front Immunol*. 8, 16 (2017) (PMID:28191006)
- Zhao Z *et al.* Curcumin accelerates the repair of sciatic nerve injury in rats through reducing Schwann cells apoptosis and promoting myelination. *Front Immunol*. 8, 16 (2017)(PMID:28622711)
- He R *et al.* Glucosyltransferase Activity of Clostridium difficile Toxin B Triggers Autophagy-mediated Cell Growth Arrest. *Sci Rep*. 7, 10532 (2017)(PMID:28874882)
- Sun Y *et al.* Dietary potassium regulates vascular calcification and arterial stiffness. *JCI insight* 2, e94920 (2017) (PMID:28978809)
- Wang H *et al.* Resveratrol attenuates oxidative damage through activating mitophagy in an in vitro model of Alzheimer's disease. *Toxicol Lett*. 282, 100–108 (2018)(PMID:29097221)
- Wang Y *et al.* AG-1031 induced autophagic cell death and apoptosis in C6 glioma cells associated with Notch-1 signaling pathway. *J Cell Biochem*. 119, 5893–5903(2018)(PMID:29575026)
- Li YC *et al.* Opposite Effects of Two Human ATG10 Isoforms on Replication of a HCV Sub-genomic Replicon Are Mediated via Regulating Autophagy Flux in Zebrafish. *Front Cell Infect Microbiol*. 8, 109 (2018)(PMID:29670865)
- Ito Y *et al.* Synergistic effects of HMG-CoA reductase inhibitor and angiotensin II receptor blocker on load-induced heart failure. *FEBS Open Bio*. 8, 799–816 (2018)(PMID:29670865)
- Taniguchi K *et al.* Depletion of gamma-glutamylcyclotransferase in cancer cells induces autophagy followed by cellular senescence. *Am J Cancer Res*. 8, 650–661 (2018)(PMID:29736310)
- Kozako T *et al.* Novel small molecule SIRT2 inhibitors induce cell death in leukemic cell lines. *BMC Cancer*. 18, 791 (2018) (PMID:30081901)
- Saito T *et al.* An alternative mitophagy pathway mediated by Rab9 protects the heart against ischemia. *J Clin Invest*. 129, 802–819 (2019) (PMID:30511961)

Immunoprecipitation

- Meng XH *et al.* Intracellular Insulin and Impaired Autophagy in a Zebrafish model and a Cell Model of Type 2 diabetes. *Int J Biol Sci*. 13, 985–995 (2017)(PMID:28924380)

Immunocytochemistry

- Li Z *et al.* Ammonia Induces Autophagy through Dopamine Receptor D3 and MTOR. *PLoS One* 11, e0153526 (2016) (PMID:27077655)
- Meng XH *et al.* Intracellular Insulin and Impaired Autophagy in a Zebrafish model and a Cell Model of Type 2 diabetes. *Int J Biol Sci*. 13, 985–995 (2017)(PMID:28924380)
- Li W *et al.* Autophagy is required for human umbilical cord mesenchymal stem cells to improve spatial working memory in APP/PS1 transgenic mouse model. *Stem Cell Res Ther*. 9, 9 (2018)(PMID:29335016)

Product category Research area **Autophagy**
Brands

 **Inquiry about this product**

- The availability is based on the information in Japan at 00:05, May 21, 2019 in JST.
- The special price is shown in red color.
- Please note that products cannot be ordered from this website. To purchase the items listed in this website, please contact us or local distributors.
- Abbreviations for applications:
 - WB: Western Blotting, IH: Immunohistochemistry, IC: Immunocytochemistry, IP: Immunoprecipitation
 - FCM: Flow Cytometry, NT: Neutralization, IF: Immunofluorescence, RIP: RNP Immunoprecipitation
 - ChIP: Chromatin Immunoprecipitation, CoIP: Co-Immunoprecipitation
 - DB: Dot Blotting, NB: Northern Blotting, RNA FISH: RNA Fluorescence *in situ* hybridization
- For applications and reactivity:
 - *: The use is reported in a research article (Not tested by MBL). Please check the data sheet for detailed information.

***: The use is reported from the licenser (Under evaluation or not tested by MBL).

· For storage temperature: RT; room temperature

· Please note that products in this website might be changed or discontinued without notification in advance for quality improvement.

 [HOME](#)

[Security & Privacy](#) | [About this site](#)

 [TOP](#)

Product category

<Research area>

- [Autophagy](#)
- [Immunology](#)
- [Stem cell research](#)
- [RNA-RNP network](#)
- [Epigenetics](#)
- [Cancer](#)
- [Metabolism](#)
- [Drug discovery](#)
- [Apoptosis](#)
- [Ubiquitin proteasome](#)
- [Neuroscience](#)
- [Multiple transmembrane protein](#)
- [Circadian rhythm](#)
- [Cell surface antigens](#)
- [Cytokine & Growth Factors](#)
- [Signal transduction](#)
- [Cellular stress](#)
- [Exosomes](#)

<Tools>

- [Epitope tags](#)
- [MHC tetramer](#)
- [Fluorescent proteins](#)
- [Control antibodies](#)
- [Immunoglobulin](#)
- [Tissue arrays](#)
- [Molecular pathology tools](#)
- [Cell culture reagents](#)
- [Flow cytometry reagents](#)
- [2nd antibodies](#)
- [Others](#)

<Brands>

- [CycLex](#)
- [CircuLex](#)
- [Amalgam](#)
- [CoralHue™](#)
- [HRP-Direct](#)
- [RiboCluster Profiler™](#)

Custom services

information

- [New products](#)
- [OUTLET SALE](#)
- [Campaign](#)
- [Discontinued Products](#)
- [Topics](#)
- [Exhibitions](#)
- [Literatures offer](#)

Learn

- [Principle and method of the experiment](#)

Download

- [Consent and Request forms](#)
- [Brochures & leaflets](#)
- [MBL RUO LETTER](#)
- [Immunology News](#)
- [Pathway posters](#)

Contact

MBL MEDICAL & BIOLOGICAL LABORATORIES CO., LTD.
A JSR Life Sciences Company

Copyright © 2017 MEDICAL & BIOLOGICAL LABORATORIES CO., LTD. All rights reserved.