

Mouse pro-MMP-9 ELISA Kit

EMMMP9

Number	Description
EMMMP9	Mouse pro-MMP-9 ELISA Kit, sufficient reagents for 96 determinations

Kit Contents	Size
Anti-Mouse pro-MMP-9 Precoated 96-well Strip Plate	1 each
Lyophilized Recombinant Mouse pro-MMP-9 Standard	2 vials
20X Wash Buffer	25mL
Biotinylated Antibody Reagent	2 vials
Streptavidin-HRP Reagent	200uL
TMB Substrate	12mL
Stop Solution, contains 0.2M sulfuric acid	8mL
Assay Diluent, 5X concentrated buffer	15mL
Adhesive Plate Sealer	2

For research use only. Not for use in diagnostic procedures.

Storage: May be stored for up to 6 months at 2° to 8°C from the date of shipment. Opened microplate wells or reagents may be store for up to 1 month at 2° to 8°C. Return unused wells to the pouch containing desiccant pack, reseal along entire edge. Reconstituted standard can be stored at -80°C for up to 1 week.

Note: the kit can be used within one year if the whole kit is stored at -20°C. Avoid repeated freeze-thaw cycles.

Table of Contents

Introduction.....	1
Procedure Summary.....	2
Additional Materials Required.....	2
Precautions.....	3
Sample Preparation.....	3
Reagent Preparation.....	4
Assay Procedure.....	5
Performance Characteristics.....	6
Data Templates.....	8

Introduction

The Thermo Scientific™ Pierce™ Mouse pro-MMP-9 ELISA Kit is an enzyme-linked immunosorbent assay for measuring mouse pro-MMP-9 in serum, plasma, and cell culture media.

Procedure Summary

- | | | | |
|---|---|--|--|
| <p>1. Prepare all reagents, samples and standards as instructed.</p> | <p>2. Add 100μL standard and sample to wells. Cover plate & incubate at RT for 2.5 hours.</p> | <p>3. Wash plate four times</p> | <p>4. Add 100μL Biotinylated Antibody to wells. Cover plate & incubate at RT for 1 hour.</p> |
| <p>5. Wash plate four times</p> | <p>6. Add 100μL of Streptavidin-HRP Reagent to each well.</p> | <p>7. Cover & incubate plate at RT for 45 minutes.</p> | <p>8. Wash plate four times</p> |
| <p>9. Add 100μL TMB Substrate to each well.</p> | <p>10. Develop plate at room temperature in the dark for 30 minutes.</p> | <p>11. Add 50μL of Stop Solution to each well.</p> | <p>12. Measure absorbance and calculate results</p> |

Additional Materials Required

- Precision pipettors with disposable plastic tips to deliver 5-1000 μ L and plastic pipettes to deliver 5-15mL
- Ultrapure water for Wash Buffer and Standard reconstitution
- A glass or plastic 1L container to prepare Wash Buffer
- A squirt wash bottle or an automated 96-well plate washer
- 1.5mL polypropylene or polyethylene tubes to prepare standards - do not use polystyrene, polycarbonate or glass tubes
- Disposable reagent reservoirs
- A standard ELISA plate reader for measuring absorbance at 450nm and 550nm. If a 550nm filter is not available, the absorbance may be read at 450nm only. Refer to the instruction manual supplied with the instrument being used.

Precautions

- All specimens and reagents must be at room temperature (20-25°C) before use in the assay.
- Review all instructions carefully and verify components against the Kit Contents list (page 1) before beginning the assay.
- Do not use a 37°C water bath to thaw samples. Thaw samples at room temperature.
- If using a multichannel pipettor, always use a new disposable reagent reservoir for the addition of each reagent. Use new disposable pipette tips for each transfer to avoid cross-contamination.
- Use a new adhesive plate cover for each incubation step.
- Avoid microbial contamination of reagents.
- Avoid exposing reagents to excessive heat or light during storage and incubation.
- Do not mix reagents from different kit lots. Discard unused ELISA components after completing the assay.
- Do not use glass pipettes to measure the TMB Substrate Solution. Take care not to contaminate the solution. If the solution is blue before use, DO NOT USE IT.
- Individual components may contain antibiotics and preservatives. Wear gloves while performing the assay to avoid contact with samples and reagents. Please follow proper disposal procedures.
- Some components of this kit contain sodium azide. Please dispose of reagents according to local regulations.

Sample Preparation

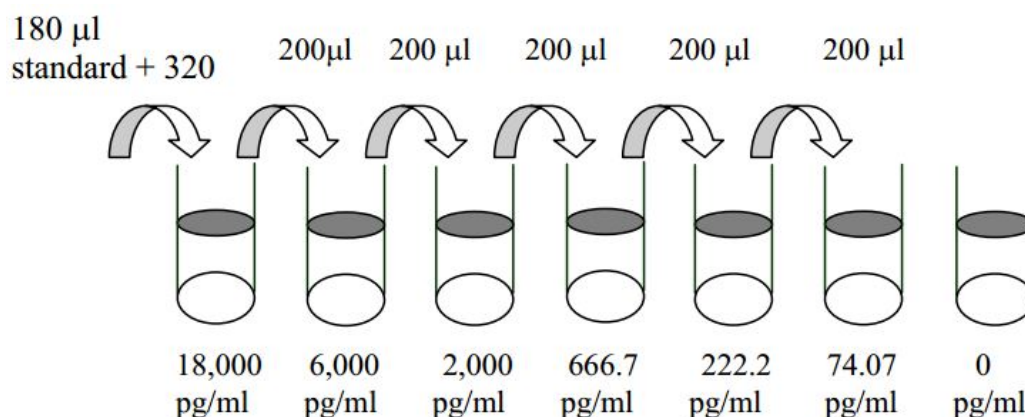
- Serum, plasma, and cell culture media sample types may be tested in this assay; 100µL per well of diluted sample is required. See reagent preparation step 3 for sample dilution recommendations.
- Store samples to be assayed within 24 hours at 2-8°C. For long-term storage, aliquot and freeze samples at -70°C. Avoid repeated freeze-thaw cycles when storing samples.
- Samples and standards must be assayed in duplicate each time the assay is performed.
- Equilibrate samples gradually to room temperature before beginning the assay. Do not use a heated water bath to thaw or warm samples.
- Mix samples by gently inverting the tubes.
- If samples are clotted, grossly hemolyzed, lipemic or contaminated, make a note on the template and interpret results with caution.

Reagent Preparation

1. Bring all reagents and samples to room temperature (18 - 25°C) before use.
2. Assay Diluent should be diluted 5-fold with deionized or distilled water before use.
3. **Sample dilution:** 1X Assay Diluent should be used for dilution of serum, plasma, and cell culture supernatant samples. The suggested dilution for normal serum/plasma is 50 - 500 fold.

Note: Levels of pro-MMP-9 may vary between different samples. Optimal dilution factors for each sample must be determined by the investigator.

4. **Preparation of standard:** Briefly spin a vial of lyophilized standard. Add 270µL 1X Assay Diluent into the lyophilized standard vial to prepare a 50 ng/mL standard solution. Dissolve the powder thoroughly by a gentle mix. Add 180µL pro-MMP-9 standard from the vial of tem C, into a tube with 320µL 1X Assay Diluent to prepare an 18,000 pg/mL standard solution. Pipette 400µL 1X Assay Diluent into each tube. Use the 18,000 pg/mL standard solution to produce a dilution series (shown below). Mix each tube thoroughly before the next transfer. 1X Assay Diluent serves as the zero standard (0 pg/mL).



5. If the 20X Wash Buffer contains visible crystals, warm to room temperature and mix gently until dissolved. Dilute 20mL of the Wash Buffer Concentrate into deionized or distilled water to yield 400mL of 1X Wash Buffer.
6. Briefly spin the Biotinylated Antibody Reagent vial before use. Add 100µL of 1X Assay Diluent into the vial to prepare a biotinylated antibody concentrate. Pipette up and down to mix gently (the concentrate can be stored at 4°C for 5 days). The biotinylated antibody concentrate should be diluted 80-fold with 1X Assay Diluent and used in step 4 of Assay Procedure.
7. Briefly spin the Streptavidin-HRP Reagent vial and pipette up and down to mix gently before use, as precipitates may form during storage. The Streptavidin-HRP Reagent should be diluted 400-fold with 1X Assay Diluent.

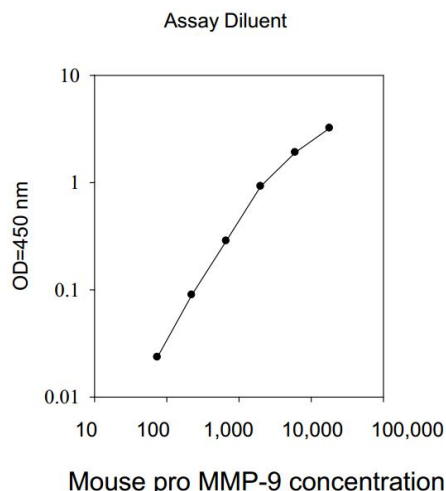
For example: Briefly spin the vial and pipette up and down to mix gently. Add 30µL of HRP-Streptavidin concentrate into a tube with 12mL 1X Assay Diluent to prepare a 400-fold diluted HRP-Streptavidin solution (Use the diluted Strept-HRP solution same day; Do not store diluted solution for future use). Mix well

Assay Procedure

1. Bring all reagents and samples to room temperature (18 - 25°C) before use. It is recommended that all standards and samples be run at least in duplicate.
2. Add 100µL of each standard (see Reagent Preparation step 3) and sample into appropriate wells. Cover wells and incubate for 2.5 hours at room temperature or over night at 4°C with gentle shaking.
3. Discard the solution and wash 4 times with 1X Wash Buffer. Wash by filling each well with Wash Buffer (300µL) using a multi-channel Pipette or autowasher. Complete removal of liquid at each step is essential for good performance. After the last wash, remove any remaining Wash Buffer by aspirating or decanting. Invert the plate and blot it against clean paper towels.
4. Add 100µL of 1X prepared biotinylated antibody (Reagent Preparation step 6) to each well. Incubate for 1 hour at room temperature with gentle shaking.
5. Discard the solution. Repeat the wash as in step 3.
6. Add 100µL of prepared Streptavidin-HRP solution (see Reagent Preparation step 7) to each well. Incubate for 45 minutes at room temperature with gentle shaking.
7. Discard the solution. Repeat the wash as in step 3.
8. Add 100µL of TMB Substrate to each well. Incubate for 30 minutes at room temperature in the dark with gentle shaking.
9. The plate must be evaluated within 30 minutes of stopping the reaction. Measure absorbance on an ELISA plate reader set at 450nm and 550nm. Subtract 550nm values from at 450nm values to correct for optical imperfections in the microplate. If 550nm is not available, measure absorbance at 450nm only. Omitting the 550nm measurement will result in higher absorbance values.
10. Calculation of Results:
 - Generate the standard curve by plotting the average absorbance (450nm minus 550nm) obtained for each Standard concentration on the vertical (Y) axis vs. the corresponding pro-MMP-9 concentration on the horizontal (X) axis.
 - Calculate results manually using graph paper or with a curve-fitting statistical software package. If using curve-fitting software, plot a four-parameter logistic curve fit. Alternatively, a point-to-point curve fit may be used. Determine the amount of pro-MMP-9 in each sample by interpolating from the pro-MMP-9 concentration (X axis) to the absorbance value (Y axis).
 - If the sample was diluted, multiply the interpolated value obtained by the dilution factor to determine amount of pro-MMP-9 in the sample.
 - Absorbance values obtained for duplicates should be within 10% of the mean value. Carefully consider duplicate values that differ from the mean by greater than 10%.

Performance Characteristics

Typical Data: These standard curves are for demonstration only. A standard curve must be run with each assay.



Sensitivity: 50 pg/mL

The sensitivity or Lower Limit of Detection (LLD) was determined by assaying replicates of zero and the standard curve. The mean signal of zero + 2 standard deviations read in dose from the standard curve is the LLD. This value is the smallest dose that is not zero with 95% confidence.

Spiking & Recovery: Pooled serum, plasma, and cell culture media samples were spiked with recombinant Mouse pro-MMP-9. Endogenous Mouse pro-MMP-9 levels were determined by testing non-spiked samples alongside spiked aliquots of the same samples. Expected values were calculated by adding endogenous pro-MMP-9 levels to those of the spiked control. Percent recovery was calculated by dividing observed by expected values.

Sample Type	Average % Recovery	Range (%)
Serum	114	97-132
Plasma	112	101-121
Cell Culture Media	110	96-118

Linearity: The serum, plasma, and cell culture media samples were spiked with recombinant Mouse pro-MMP-9, serially diluted in sample diluent and evaluated. Observed values were compared to expected values to calculate percent recovery and demonstrate the dilution linearity of the assay.

Sample Type	Average % Expected		Range (%)	
	1:2 Dilution	1:4 Dilution	1:2 Dilution	1:4 Dilution
Serum	111	103	101-122	91-119
Plasma	104	94	93-112	83-110
Cell Culture Media	102	96	90-108	84-107








Reproducibility: Assay reproducibility was evaluated in each sample matrix. To determine intra-assay precision, two standard curves and 3 samples for each standard curve are run. The standard curve concentration points as well as the samples are tested in duplicates on a single plate. Two different concentration values are obtained for each sample, using the two separate standard curves. The two concentration values for each sample is compared to each other using the CV% calculation. To evaluate inter-assay precision, the second standard curve is tested on a separate plate along with the second set of samples.

Intra-Assay CV%: <10%

Inter-Assay CV%: <12%

Specificity: This ELISA kit shows no cross-reactivity with the following cytokines tested: Mouse CD30L, CD30, CD40, CRG-2, CTACK, CXCL16, Eotaxin, Eotaxin-2, Fas Ligand, Fractalkine, GCSF, GM-CSF, IFN-gamma, IGFBP-3, IGFBP-5, IGFBP-6, IL-1 alpha, IL-1 beta, IL-2, IL-3, IL-3 Rb, IL-4, IL-5, IL-9, IL-10, IL-12 p40/p70, IL-12 p70, IL-13, IL-17, KC, Leptin R, LEPTIN (OB), LIX, L-Selectin, Lymphotactin, MCP-1, MCP-5, M-CSF, MIG, MIP-1 alpha, MIP-1 gamma, MIP-2, MIP-3 beta, MIP-3 alpha, PF-4, PSelectin, RANTES, SCF, SDF-1 alpha, TARC, TCA-3, TECK, TIMP-1, TNF-alpha, TNF RI, TNF RII, TPO, VCAM-1, VEGF.

Explanation of symbols

Symbol	Description	Symbol	Description
	Manufacturer		Catalog number
	Use by		Temperature limitation
	Consult instructions for use		Caution, consult accompanying documents
	Batch code		

Products are warranted to operate or perform substantially in conformance with published Product specifications in effect at the time of sale, as set forth in the Product documentation, specifications and/or accompanying package inserts ("Documentation"). No claim of suitability for use in applications regulated by FDA is made. The warranty provided herein is valid only when used by properly trained individuals. Unless otherwise stated in the Documentation, this warranty is limited to one year from date of shipment when the Product is subjected to normal, proper and intended usage. This warranty does not extend to anyone other than Buyer. Any model or sample furnished to Buyer is merely illustrative of the general type and quality of goods and does not represent that any Product will conform to such model or sample.

NO OTHER WARRANTIES, EXPRESS OR IMPLIED, ARE GRANTED, INCLUDING WITHOUT LIMITATION, IMPLIED WARRANTIES OF MERCHANTABILITY, FITNESS FOR ANY PARTICULAR PURPOSE, OR NON INFRINGEMENT. BUYERS EXCLUSIVE REMEDY FOR NON-CONFORMING PRODUCTS DURING THE WARRANTY PERIOD IS LIMITED TO REPAIR, REPLACEMENT OF OR REFUND FOR THE NON-CONFORMING PRODUCT(S) AT SELLER'S SOLE OPTION. THERE IS NO OBLIGATION TO REPAIR, REPLACE OR REFUND FOR PRODUCTS AS THE RESULT OF (I) ACCIDENT, DISASTER OR EVENT OF FORCE MAJEURE, (II) MISUSE, FAULT OR NEGLIGENCE OF OR BY BUYER, (III) USE OF THE PRODUCTS IN A MANNER FOR WHICH THEY WERE NOT DESIGNED, OR (IV) IMPROPER STORAGE AND HANDLING OF THE PRODUCTS.

Unless otherwise expressly stated on the Product or in the documentation accompanying the Product, the Product is intended for research only and is not to be used for any other purpose, including without limitation, unauthorized commercial uses, in vitro diagnostic uses, ex vivo or in vivo therapeutic uses, or any type of consumption by or application to humans or animals.

Current product instructions are available at <http://www.thermoscientific.com/elisa>. For a faxed copy, call 800-874-3723 or contact your local distributor.

©2015 Thermo Fisher Scientific Inc. All rights reserved. Unless otherwise indicated, all trademarks are property of Thermo Fisher Scientific Inc. and its subsidiaries. Printed in the USA.

Data Templates

	1	2	3	4	5	6	7	8	9	10	11	12
A												
B												
C												
D												
E												
F												
G												
H												

	1	2	3	4	5	6	7	8	9	10	11	12
A												
B												
C												
D												
E												
F												
G												
H												