



**ab208980 – Mouse
von Willebrand factor
A2 (vWF A2)
SimpleStep ELISA[®] Kit**

Instructions for Use

For the quantitative measurement of vWF A2 in mouse serum, plasma and cell culture supernatant samples.

This product is for research use only and is not intended for diagnostic use.

Table of Contents

INTRODUCTION

- 1. BACKGROUND 2
- 2. ASSAY SUMMARY 3

GENERAL INFORMATION

- 3. PRECAUTIONS 4
- 4. STORAGE AND STABILITY 4
- 5. MATERIALS SUPPLIED 4
- 6. MATERIALS REQUIRED, NOT SUPPLIED 4
- 7. LIMITATIONS 5
- 8. TECHNICAL HINTS 5

ASSAY PREPARATION

- 9. REAGENT PREPARATION 7
- 10. STANDARD PREPARATION 8
- 11. SAMPLE PREPARATION 9
- 12. PLATE PREPARATION 10

ASSAY PROCEDURE

- 13. ASSAY PROCEDURE 11

DATA ANALYSIS

- 14. CALCULATIONS 13
- 15. TYPICAL DATA 14
- 16. TYPICAL SAMPLE VALUES 15
- 17. ASSAY SPECIFICITY 20
- 18. SPECIES REACTIVITY 20

RESOURCES

- 19. TROUBLESHOOTING 21
- 20. NOTES 22

1. BACKGROUND

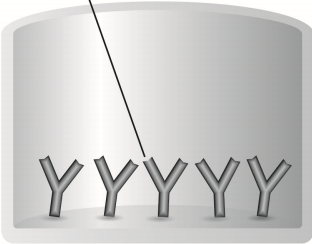
Abcam's vWF A2 (von Willebrand factor A2) *in vitro* SimpleStep ELISA® (Enzyme-Linked Immunosorbent Assay) kit is designed for the quantitative measurement of vWF A2 protein in mouse serum, plasma and cell culture supernatant samples.

The SimpleStep ELISA® employs an affinity tag labeled capture antibody and a reporter conjugated detector antibody which immunocapture the sample analyte in solution. This entire complex (capture antibody/analyte/detector antibody) is in turn immobilized via immunoaffinity of an anti-tag antibody coating the well. To perform the assay, samples or standards are added to the wells, followed by the antibody mix. After incubation, the wells are washed to remove unbound material. TMB substrate is added and during incubation is catalyzed by HRP, generating blue coloration. This reaction is then stopped by addition of Stop Solution completing any color change from blue to yellow. Signal is generated proportionally to the amount of bound analyte and the intensity is measured at 450 nm. Optionally, instead of the endpoint reading, development of TMB can be recorded kinetically at 600 nm.

vWF A2 and vWF (von Willebrand Factor) are distinct proteins with non-overlapping amino acid sequences generated by proteolytic cleavage from the same precursor protein during intracellular processing. vWF is important in the maintenance of hemostasis; it is a glycoprotein that circulates in plasma as a series of high molecular weight multimers and mediates the adhesion of platelets to exposed sub-endothelium. vWF is synthesized in endothelial cells and megakaryocytes. vWF A2 is found in plasma and platelets, from which they are released by their activation including thrombin. Both vWF and vWF A2 are deficient in von Willebrand's disease.

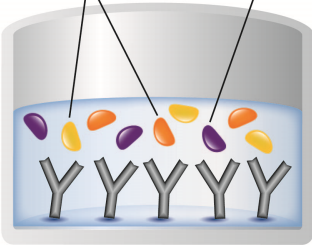
2. ASSAY SUMMARY

Immobilization Antibody



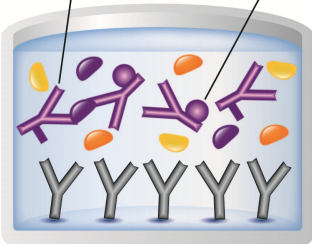
Remove appropriate number of antibody coated well strips. Equilibrate all reagents to room temperature. Prepare all reagents, samples, and standards as instructed.

Matrix Proteins Target Analyte



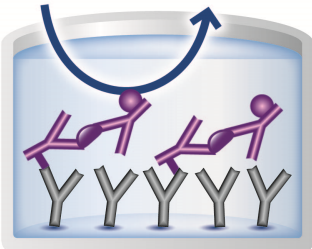
Add standard or sample to appropriate wells.

Capture Antibody Detector Antibody



Add Antibody Cocktail to all wells. Incubate at room temperature.

Substrate Color Development



Aspirate and wash each well. Add TMB Substrate to each well and incubate. Add Stop Solution at a defined endpoint. Alternatively, record color development kinetically after TMB substrate addition.

3. PRECAUTIONS

Please read these instructions carefully prior to beginning the assay.

All kit components have been formulated and quality control tested to function successfully as a kit. Modifications to the kit components or procedures may result in loss of performance.

4. STORAGE AND STABILITY

Store kit at 2-8°C immediately upon receipt.

Refer to list of materials supplied for storage conditions of individual components. Observe the storage conditions for individual prepared components in the Reagent and Standard Preparation sections.

5. MATERIALS SUPPLIED

Item	Amount	Storage Condition (Before Preparation)
10X Mouse vWF A2 Capture Antibody	600 µL	+2-8°C
10X Mouse vWF A2 Detector Antibody	600 µL	+2-8°C
Mouse vWF A2 Lyophilized Recombinant Protein	2 Vials	+2-8°C
Antibody Diluent 4BR	6 mL	+2-8°C
10X Wash Buffer PT	20 mL	+2-8°C
TMB Substrate	12 mL	+2-8°C
Stop Solution	12 mL	+2-8°C
Sample Diluent NS	50 mL	+2-8°C
Pre-Coated 96 Well Microplate (12 x 8 well strips)	96 Wells	+2-8°C
Plate Seal	1	+2-8°C

6. MATERIALS REQUIRED, NOT SUPPLIED

These materials are not included in the kit, but will be required to successfully utilize this assay:

- Microplate reader capable of measuring absorbance at 450 or 600 nm.
- Method for determining protein concentration (BCA assay recommended).
- Deionized water.
- Multi- and single-channel pipettes.
- Tubes for standard dilution.
- Plate shaker for all incubation steps.
- Optional: Phenylmethylsulfonyl Fluoride (PMSF) (or other protease inhibitors).

7. LIMITATIONS

- Assay kit intended for research use only. Not for use in diagnostic procedures.
- Do not mix or substitute reagents or materials from other kit lots or vendors. Kits are QC tested as a set of components and performance cannot be guaranteed if utilized separately or substituted.

8. TECHNICAL HINTS

- Samples generating values higher than the highest standard should be further diluted in the appropriate sample dilution buffers.
- Avoid foaming or bubbles when mixing or reconstituting components.
- Avoid cross contamination of samples or reagents by changing tips between sample, standard and reagent additions.
- Ensure plates are properly sealed or covered during incubation steps.

GENERAL INFORMATION

- Complete removal of all solutions and buffers during wash steps is necessary to minimize background.
- As a guide, typical ranges of sample concentration for commonly used sample types are shown below in Sample Preparation (section 11).
- All samples should be mixed thoroughly and gently.
- Avoid multiple freeze/thaw of samples.
- Incubate ELISA plates on a plate shaker during all incubation steps.
- When generating positive control samples, it is advisable to change pipette tips after each step.
- The provided Antibody Diluents and Sample Diluents contain protease inhibitor aprotinin. Additional protease inhibitors can be added if required.
- **To avoid high background always add samples or standards to the well before the addition of the antibody cocktail.**
- **This kit is sold based on number of tests. A ‘test’ simply refers to a single assay well. The number of wells that contain sample, control or standard will vary by product. Review the protocol completely to confirm this kit meets your requirements. Please contact our Technical Support staff with any questions.**

9. REAGENT PREPARATION

- Equilibrate all reagents to room temperature (18-25°C) prior to use. The kit contains enough reagents for 96 wells. **The sample volumes below are sufficient for 48 wells (6 x 8-well strips); adjust volumes as needed for the number of strips in your experiment.**
- Prepare only as much reagent as is needed on the day of the experiment. Capture and Detector Antibodies have only been tested for stability in the provided 10X formulations.

9.1 **1X Wash Buffer PT**

Prepare 1X Wash Buffer PT by diluting 10X Wash Buffer PT with deionized water. To make 50 mL 1X Wash Buffer PT combine 5 mL 10X Wash Buffer PT with 45 mL deionized water. Mix thoroughly and gently.

9.2 **Antibody Cocktail**

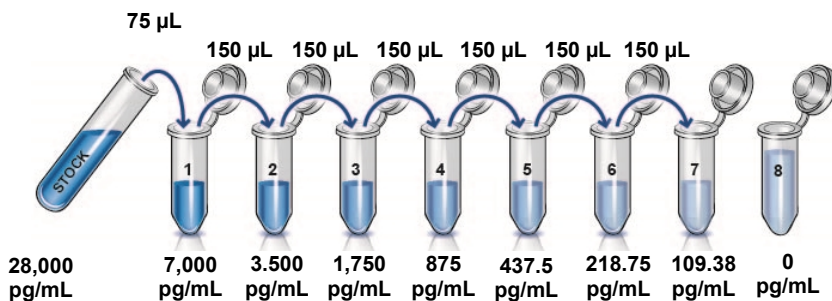
Prepare Antibody Cocktail by diluting the capture and detector antibodies in Antibody Diluent 4BR. To make 3 mL of the Antibody Cocktail combine 300 μ L 10X Capture Antibody and 300 μ L 10X Detector Antibody with 2.4 mL Antibody Diluent 4BR. Mix thoroughly and gently.

10. STANDARD PREPARATION

Prepare serially diluted standards immediately prior to use. Always prepare a fresh set of positive controls for every use.

The following section describes the preparation of a standard curve for duplicate measurements (recommended).

- 10.1 Reconstitute the mouse vWF A2 protein standard sample by adding 200 μL water. Hold at room temperature for 10 minutes and mix gently. This is the 28,000 pg/mL **Stock Standard Solution**.
- 10.2 Label eight tubes, Standards 1–8.
- 10.3 Add 225 μL Sample Diluent NS into tube number 1 and 150 μL of Sample Diluent NS into numbers 2-8.
- 10.4 Use the Stock Standard to prepare the following dilution series. Standard #8 contains no protein and is the Blank control:



11. SAMPLE PREPARATION

TYPICAL SAMPLE DYNAMIC RANGE	
Sample Type	Range
Mouse Plasma - Citrate	1:457 – 1:28
Mouse Plasma - EDTA	1:457 – 1:14
Mouse Plasma - Heparin	1:914 – 1:28
Mouse Serum	1:4,266 – 1:133

11.1 Plasma

Collect plasma using citrate, EDTA or heparin. Centrifuge samples at 2,000 x g for 10 minutes. Dilute plasma (citrate and heparin) samples at least 28X into Sample Diluent NS and assay. Dilute plasma (EDTA) samples at least 14X into Sample Diluent NS and assay. Store un-diluted plasma samples at -20°C or below for up to 3 months. Avoid repeated freeze-thaw cycles.

11.2 Serum

Samples should be collected into a serum separator tube. After clot formation, centrifuge samples at 2,000 x g for 10 minutes and collect serum. Dilute serum samples at least 133X into Sample Diluent NS and assay. Store un-diluted serum at -20°C or below. Avoid repeated freeze-thaw cycles.

11.3 Cell Culture Supernatants

Centrifuge cell culture media at 2,000 x g for 10 minutes to remove debris. Collect supernatants. Cell culture supernatant samples can be assayed without dilution. If needed dilute cell culture supernatant samples in Sample Diluent NS and assay. Store un-diluted samples at -20°C or below. Avoid repeated freeze-thaw cycles.

12. PLATE PREPARATION

- The 96 well plate strips included with this kit are supplied ready to use. It is not necessary to rinse the plate prior to adding reagents.
- Unused plate strips should be immediately returned to the foil pouch containing the desiccant pack, resealed and stored at 4°C.
- For each assay performed, a minimum of two wells must be used as the zero control.
- For statistical reasons, we recommend each sample should be assayed with a minimum of two replicates (duplicates).
- Differences in well absorbance or “edge effects” have not been observed with this assay.

13. ASSAY PROCEDURE

- **Equilibrate all materials and prepared reagents to room temperature prior to use.**
- **It is recommended to assay all standards, controls and samples in duplicate.**
 - 13.1 Prepare all reagents, working standards, and samples as directed in the previous sections.
 - 13.2 Remove excess microplate strips from the plate frame, return them to the foil pouch containing the desiccant pack, reseal and return to 4°C storage.
 - 13.3 Add 50 µL of all sample or standard to appropriate wells.
 - 13.4 Add 50 µL of the Antibody Cocktail to each well.
 - 13.5 Seal the plate and incubate for 1 hour at room temperature on a plate shaker set to 400 rpm.
 - 13.6 Wash each well with 3 x 350 µL 1X Wash Buffer PT. Wash by aspirating or decanting from wells then dispensing 350 µL 1X Wash Buffer PT into each well. Complete removal of liquid at each step is essential for good performance. After the last wash invert the plate and blot it against clean paper towels to remove excess liquid.
 - 13.7 Add 100 µL of TMB Substrate to each well and incubate for 10 minutes in the dark on a plate shaker set to 400 rpm.
 - 13.8 Add 100 µL of Stop Solution to each well. Shake plate on a plate shaker for 1 minute to mix. Record the OD at 450 nm. This is an endpoint reading.

Alternative to 13.7 – 13.8: Instead of the endpoint reading at 450 nm, record the development of TMB Substrate kinetically. Immediately after addition of TMB Development Solution begin recording the blue color development with elapsed time in the microplate reader prepared with the following settings:

ASSAY PROCEDURE

Mode:	Kinetic
Wavelength:	600 nm
Time:	up to 15 min
Interval:	20 sec - 1 min
Shaking:	Shake between readings

Note that an endpoint reading can also be recorded at the completion of the kinetic read by adding 100 μ L Stop Solution to each well and recording the OD at 450 nm.

13.9 Analyze the data as described below.

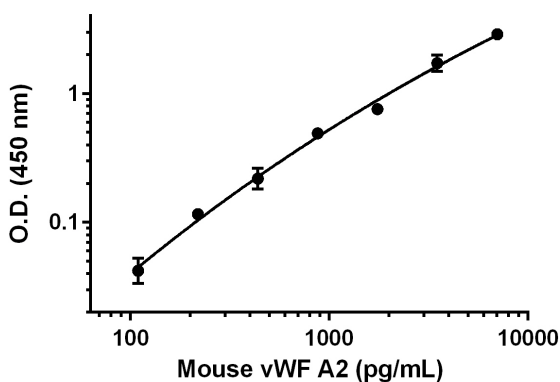
14. CALCULATIONS

- 14.1 Calculate the average absorbance value for the blank control (zero) standards. Subtract the average blank control standard absorbance value from all other absorbance values.
- 14.2 Create a standard curve by plotting the average blank control subtracted absorbance value for each standard concentration (y-axis) against the target protein concentration (x-axis) of the standard. Use graphing software to draw the best smooth curve through these points to construct the standard curve.

Note: Most microplate reader software or graphing software will plot these values and fit a curve to the data. A four parameter curve fit (4PL) is often the best choice; however, other algorithms (e.g. linear, semi-log, log/log, 4 parameter logistic) can also be tested to determine if it provides a better curve fit to the standard values.
- 14.3 Determine the concentration of the target protein in the sample by interpolating the blank control subtracted absorbance values against the standard curve. Multiply the resulting value by the appropriate sample dilution factor, if used, to obtain the concentration of target protein in the sample.
- 14.4 Samples generating absorbance values greater than that of the highest standard should be further diluted and reanalyzed. Similarly, samples which measure at an absorbance values less than that of the lowest standard should be retested in a less dilute form.

15. TYPICAL DATA

TYPICAL STANDARD CURVE – Data provided for **demonstration purposes only**. A new standard curve must be generated for each assay performed.



Standard Curve Measurements			
Conc. (pg/mL)	O.D. 450 nm		Mean O.D.
	1	2	
0	0.075	0.088	0.082
109.38	0.131	0.117	0.124
218.75	0.200	0.194	0.197
437.5	0.331	0.273	0.302
875	0.586	0.559	0.573
1,750	0.799	0.885	0.842
3,500	1.997	1.637	1.817
7,000	2.919	3.044	2.982

Figure 1. Example of mouse vWF A2 standard curve. The vWF A2 standard curve was prepared as described in Section 10. Raw data values are shown in the table. Background-subtracted data values (mean +/- SD) are graphed.

16. TYPICAL SAMPLE VALUES

SENSITIVITY –

The calculated minimal detectable dose (MDD) is 37 pg/mL. The MDD was determined by calculating the mean of zero standard replicates (n=24) and adding 2 standard deviations then extrapolating the corresponding concentration.

RECOVERY –

Three concentrations of mouse recombinant vWF A2 were spiked in duplicate to the indicated biological matrix to evaluate signal recovery in the working range of the assay.

Sample Type	Average % Recovery	Range (%)
100% Serum-Free Cell Culture Media	79.0	70.9 – 83.8
0.38 % Mouse Serum	83.6	80.2 – 89.7
1.75 % Mouse Plasma - Citrate	86.3	82.7 – 90.3
1.75 % Mouse Plasma - EDTA	94.4	88.2 – 98.3
1.75 % Mouse Plasma - Heparin	82.2	78.8 – 86.7

LINEARITY OF DILUTION –

Linearity of dilution is determined based on interpolated values from the standard curve. Linearity of dilution defines a sample concentration interval in which interpolated target concentrations are directly proportional to sample dilution.

Native vWF A2 was measured in the following biological samples in a 2-fold dilution series. Sample dilutions are made in Sample Diluent NS.

Dilution Factor	Interpolated value	0.75% Mouse Serum	3.5% Mouse Plasma-Citrate	7.0 % Mouse Plasma-EDTA	3.5% Mouse Plasma-Heparin
Undiluted	pg/mL	8,080.8	5,740.6	7619.8	6,752.5
	% Expected value	100	100	100	100
2	pg/mL	3,695.9	2,610.1	4710.7	3,242.2
	% Expected value	91.5	90.9	123.6	96
4	pg/mL	1,781	1,269.1	2360.5	1,679.4
	% Expected value	88.2	88.4	123.9	99.5
8	pg/mL	905.5	603	950.6	831.2
	% Expected value	89.6	84.0	99.8	98.5
16	pg/mL	484.9	296.5	445.9	410.9
	% Expected value	96	82.6	93.6	97.4
32	pg/mL	225.4	NL	198.7	176.5
	% Expected value	89.3	NL	83.4	83.6

NL – Non-Linear

RESOURCES

Mouse recombinant vWF A2 was spiked into the following biological samples and diluted in a 2-fold dilution series in Sample Diluent NS.

Dilution Factor	Interpolated value	100% Serum-Free Media
Undiluted	pg/mL	6,019.6
	% Expected value	100
2	pg/mL	2,672.9
	% Expected value	88.8
4	pg/mL	1,504.9
	% Expected value	100
8	pg/mL	810.6
	% Expected value	107.7
16	pg/mL	380.1
	% Expected value	101

PRECISION –

Mean coefficient of variations of interpolated values of vWF A2 in 3 concentrations of normal mouse plasma (heparin) within the working range of the assay.

	Intra-Assay	Inter-Assay
n=	5	3
CV (%)	5.3	13.3

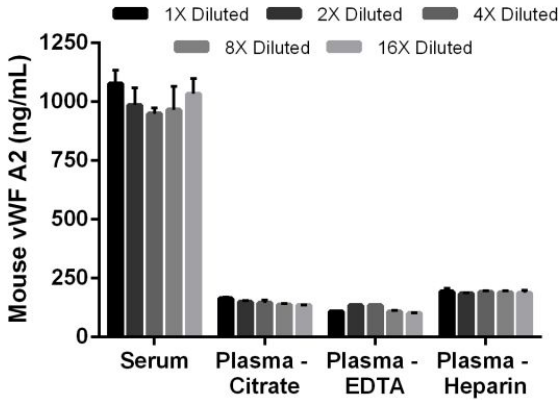


Figure 2. Interpolated concentrations of **native** vWF A2 in mouse serum and plasma samples. The concentrations of vWF A2 were measured in duplicates, interpolated from the vWF A2 standard curves and corrected for sample dilution. Undiluted samples are as follows: serum 0.75 %, plasma (citrate) 3.5 %, plasma (EDTA) 7.0 %, plasma (heparin) 3.5 %. The interpolated dilution factor corrected values are plotted (mean +/- SD, n=2). The mean vWF A2 concentration was determined to be 1003 ng/mL in serum, 146 ng/mL in plasma (citrate) 118 ng/mL in plasma (EDTA) and 190 ng/mL in plasma (heparin).

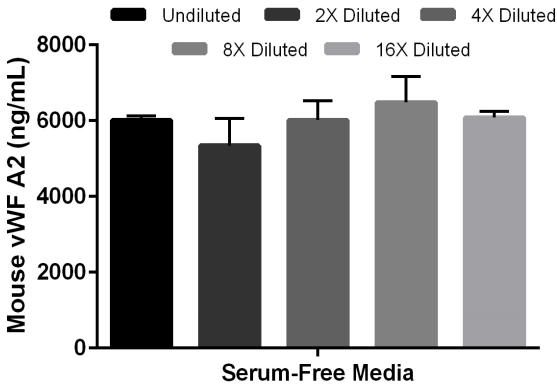


Figure 3. Interpolated concentrations of spiked mouse recombinant vWF A2 in serum-free cell culture media samples. The concentrations of vWF A2 were measured in duplicates, interpolated from the vWF A2 standard curves and corrected for sample dilution. Undiluted samples are as follows: 7,000 pg/mL of vWF A2 in 100% serum-free cell culture media. The interpolated dilution factor corrected values are plotted (mean \pm SD, n=2). The mean spiked vWF A2 concentration was determined to be 5962 pg/mL in serum-free cell culture media.

17. ASSAY SPECIFICITY

This kit recognizes both native and recombinant mouse vWF2 A2 protein in serum, plasma and cell culture supernatant samples only.

Urine, milk, saliva, cell and tissue extract samples have not been tested with this kit.

18. SPECIES REACTIVITY

This kit recognizes mouse vWF A2 protein.

Other species reactivity was determined by measuring 0.75% serum samples of various species, interpolating the protein concentrations from the mouse standard curve, and expressing the interpolated concentrations as a percentage of the protein concentration in Mouse serum assayed at the same dilution.

Reactivity < 3% was determined for the following species:

- Rabbit
- Dog

Species	% Cross-reactivity
Rat	159
Hamster	153
Guinea Pig	10
Cow	154

The kit is not compatible with the following species:

- Pig
- Goat
- Human

Please contact our Technical Support team for more information

19. TROUBLESHOOTING

Problem	Cause	Solution
Poor standard curve	Inaccurate Pipetting	Check pipettes
	Improper standard dilution	Prior to opening, briefly spin the stock standard tube and dissolve the powder thoroughly by gentle mixing
Low Signal	Incubation times too brief	Ensure sufficient incubation times; increase to 2 or 3 hour standard/sample incubation
	Inadequate reagent volumes or improper dilution	Check pipettes and ensure correct preparation
	Incubation times with TMB too brief	Ensure sufficient incubation time until blue color develops prior addition of Stop solution
Large CV	Plate is insufficiently washed	Review manual for proper wash technique. If using a plate washer, check all ports for obstructions.
	Contaminated wash buffer	Prepare fresh wash buffer
Low sensitivity	Improper storage of the ELISA kit	Store your reconstituted standards at -80°C , all other assay components 4°C . Keep TMB substrate solution protected from light.
Precipitate in Diluent	Precipitation and/or coagulation of components within the Diluent.	Precipitate can be removed by gently warming the Diluent to 37°C .

20. NOTES

UK, EU and ROW

Email: technical@abcam.com | Tel: +44-(0)1223-696000

Austria

Email: wissenschaftlicherdienst@abcam.com | Tel: 019-288-259

France

Email: supportscientifique@abcam.com | Tel: 01-46-94-62-96

Germany

Email: wissenschaftlicherdienst@abcam.com | Tel: 030-896-779-154

Spain

Email: soportecientifico@abcam.com | Tel: 911-146-554

Switzerland

Email: technical@abcam.com

Tel (Deutsch): 0435-016-424 | Tel (Français): 0615-000-530

US and Latin America

Email: us.technical@abcam.com | Tel: 888-77-ABCAM (22226)

Canada

Email: ca.technical@abcam.com | Tel: 877-749-8807

China and Asia Pacific

Email: hk.technical@abcam.com | Tel: 400 921 0189 / +86 21 2070 0500

Japan

Email: technical@abcam.co.jp | Tel: +81-(0)3-6231-0940

www.abcam.com | www.abcam.cn | www.abcam.co.jp