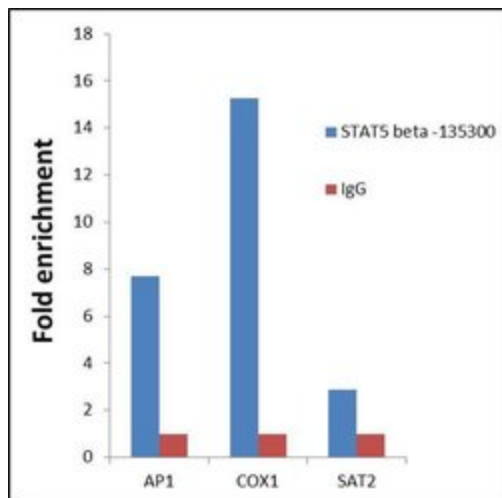


STAT5 beta Monoclonal Antibody (ST5b-10G1)

Product Details	
Size	100 µg
Species Reactivity	Human, Mouse, Rat
Published Species	Virus, Bovine, Human, Mouse
Host/Isotope	Mouse / IgG2a
Class	Monoclonal
Type	Antibody
Clone	ST5b-10G1
Conjugate	Unconjugated
Immunogen	A peptide corresponding to the unique carboxy-terminus of murine STAT5b coupled to a protein carrier.
Form	Liquid
Purification	Affinity chromatography
Storage buffer	PBS, pH 7.4
Contains	0.1% sodium azide
Storage Conditions	-20°C
RRID	AB_2533021

Applications	Tested Dilution	Publications
ChIP assay (ChIP)	5 µg/mL	2 Publications
ELISA (ELISA)	Assay Dependent	-
Gel Shift (GS)	Assay Dependent	2 Publications
Immunocytochemistry (ICC)	1:250	-
Immunofluorescence (IF)	1:250	-
Immunohistochemistry (Paraffin) (IHC (P))	1:20-1:200	-
Immunoprecipitation (IP)	Assay Dependent	2 Publications
Western Blot (WB)	1:250	4 Publications
Immunohistochemistry - Free Floating (IHC (Free))	1:3000	1 Publication
Miscellaneous PubMed (Misc)	1:1000	1 Publication

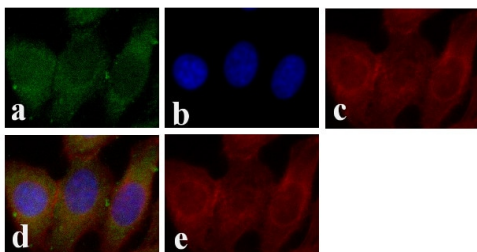
Advanced Verification Data



STAT5 beta Antibody (13-5300)

Antibody specificity was demonstrated by detection of enrichment of the target protein at specific gene loci. Chromatin Immunoprecipitation (ChIP) was performed using STAT5 beta Polyclonal Antibody (Product # 13-5300) with relevant positive (COX2, AP-1) and negative (SAT2) target genes/ binding sites. Relative expression validation info.

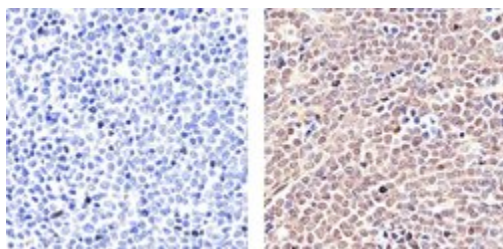
Product Images For STAT5 beta Monoclonal Antibody (ST5b-10G1)



STAT5 beta Antibody (13-5300) in IF

Immunofluorescent analysis of STAT5 beta was done on 70% confluent log phase HeLa cells. The cells were fixed with 4% paraformaldehyde for 15 minutes, permeabilized with 0.25% Triton™ X-100 for 10 minutes, and blocked with 5% BSA for 1 hour at room temperature. The cells were labeled with STAT5 beta Mouse Monoclonal Antibody (Product # 13-5300) at 1:250 dilution in 0.1% BSA and incubated for 3 hours at room temperature and then labeled with Alexa Fluor 488 Rabbit Anti-Mouse IgG Secondary Antibody (Product # A-11059) at a dilution of 1:400 for 30 minutes at room temperature (Panel a: green). Nuclei (Panel b: blue) were stained with SlowFade® Gold Antifade Mountant with DAPI (Product # S36938). F-actin (Panel c: red) was stained with Alexa Fluor 594 Phalloidin (Product # A12381). Panel d is a merged image showing cytoplasmic localization. Panel e shows no primary antibody control. The images were captured at 20X magnification.

STAT5 beta Antibody (13-5300) in IHC (P)



Immunohistochemistry analysis of STAT5 beta showing staining in the cytoplasm and nucleus of paraffin-embedded human T cell lymphoma (right) compared to a negative control without primary antibody (left). To expose target proteins, antigen retrieval was performed using 10mM sodium citrate (pH 6.0), microwaved for 8-15 min. Following antigen retrieval, tissues were blocked in 3% H₂O₂-methanol for 15 min at room temperature, washed with ddH₂O and PBS, and then probed with a STAT5 beta monoclonal antibody (Product # 13-5300) diluted in 3% BSA-PBS at a dilution of 1:100 overnight at 4°C in a humidified chamber. Tissues were washed extensively in PBST and detection was performed using an HRP-conjugated secondary antibody followed by colorimetric detection using a DAB kit. Tissues were counterstained with hematoxylin and dehydrated with ethanol and xylene to prep for mounting.

View more figures on [thermofisher.com](https://www.thermofisher.com)

12 References

ChIP assay (2)

PloS one

Inhibition of the JAK/STAT Signaling Pathway in Regulatory T Cells Reveals a Very Dynamic Regulation of Foxp3 Expression.

"135300 was used in ChIP assay to explore the role of the JAK/STAT pathway in controlling Foxp3 in regulatory T cells"

Authors: Goldstein JD,Burlion A,Zaragoza B,Sendeyo K,Polansky JK,Huehn J,Piaggio E,Salomon BL,Marodon G

Species
Human

Dilution
Not Cited

Year
2016

The Journal of biological chemistry

Identification of human STAT5-dependent gene regulatory elements based on interspecies homology.

"13-5300 was used in immunoprecipitation and western blot to identify NCAM1 as a novel STAT5 target"

Authors: Nelson EA,Walker SR,Li W,Liu XS,Frank DA

Species
Human
Not Applicable

Dilution
Not Cited
Not Cited

Year
2006

Gel Shift (2)

PloS one

DNA methylation and transcription in a distal region upstream from the bovine AlphaS1 casein gene after once or twice daily milking.

"13-5300 was used in EMSA to investigate the role of CpG methylation in milk production"

Authors: Nguyen M,Boutinaud M,Péridou B,Gabory A,Pannetier M,Chat S,Bouet S,Jouneau L,Jaffrezic F,Laloë D,Klopp C,Brun N,Kress C,Jammes H,Charlier M,Devinoy E

Species
Bovine

Dilution
Not Cited

Year
2015

The Biochemical journal

Hormone-induced modifications of the chromatin structure surrounding upstream regulatory regions conserved between the mouse and rabbit whey acidic protein genes.

"13-5300 was used in Electrophoretic mobility shift assay to study the upstream regulatory regions of the mouse and rabbit whey acidic protein (WAP) genes to elucidate fully the mechanisms controlling WAP gene expression."

Authors: Millot B,Montoliu L,Fontaine ML,Mata T,Devinoy E

Species
Mouse

Dilution
Not Cited

Year
2003

More applications with references on thermofisher.com

Misc (1) IHC (Free) (1) IP (2) WB (4)

For Research Use Only. Not for use in diagnostic procedures. Not for resale without express authorization. Products are warranted to operate or perform substantially in conformance with published Product specifications in effect at the time of sale, as set forth in the Production documentation, specifications and/or accompanying package inserts ("Documentation"). No claim of suitability for use in applications regulated by FDA is made. The warranty provided herein is valid only when used by properly trained individuals. Unless otherwise stated in the Documentation, this warranty is limited to one year from date of shipment when the Product is subjected to normal, proper and intended usage. This warranty does not extend to anyone other than the Buyer. Any model or sample furnished to Buyer is merely illustrative of the general type and quality of goods and does not represent that any Product will conform to such model or sample. NO OTHER WARRANTIES, EXPRESS OR IMPLIED, ARE GRANTED INCLUDING WITHOUT LIMITATION, IMPLIED WARRANTIES OF MERCHANTABILITY, FITNESS FOR ANY PARTICULAR PURPOSE, OR NON-INFRINGEMENT. BUYER'S EXCLUSIVE REMEDY FOR NON-CONFORMING PRODUCTS DURING THE WARRANTY PERIOD IS LIMITED TO REPAIR, REPLACEMENT OF OR REFUND FOR THE NON-CONFORMING PRODUCT(S) AT SELLER'S SOLE OPTION. THERE IS NO OBLIGATION TO REPAIR, REPLACE OR REFUND FOR PRODUCTS AS THE RESULT OF (I) ACCIDENT, DISASTER OR EVENT OF FORCE MAJEURE, (II) MISUSE, FAULT OR NEGLIGENCE OF OR BY BUYER, (III) USE OF THE PRODUCTS IN A MANNER FOR WHICH THEY WERE NOT DESIGNED, OR (IV) IMPROPER STORAGE AND HANDLING OF THE PRODUCTS. Unless otherwise expressly stated on the Product or in the documentation accompanying the Product, the Product is intended for research only and is not to be used for any other purpose, including without limitation, unauthorized commercial uses, in vitro diagnostic uses, ex vivo or in vivo therapeutic uses, or any type of consumption by or application to human or animals.