

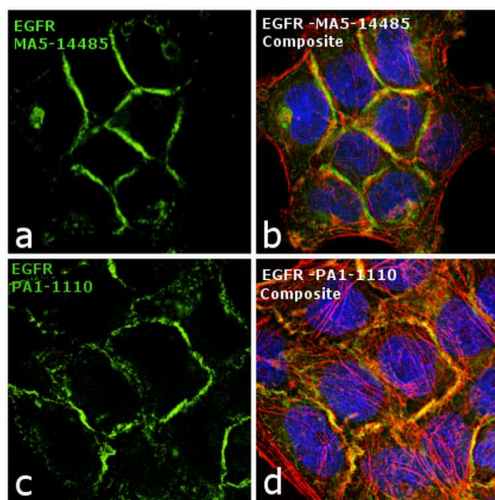
# EGFR Polyclonal Antibody

Product Details	
Size	100 µg
Species	Human, Mouse, Non-human primate, Rat
Published Species	Artificial Control, Rat, Non-human primate, Human, Mouse
Expression System	Rabbit / IgG
Class	Polyclonal
Type	Antibody
Conjugate	Unconjugated
Immunogen	Synthetic peptide corresponding to residues C L(1198) R V A P Q S S E F I G A(1210) of human EGFR.
Form	Liquid
Concentration	1 mg/mL
Purification	Antigen affinity chromatography
Storage buffer	PBS with 1mg/mL BSA
Contains	0.05% sodium azide
Storage Conditions	-20° C, Avoid Freeze/Thaw Cycles
RRID	AB_326079

Applications	Tested Dilution	Publications
Immunocytochemistry (ICC)	1 µg/mL	3 Publications
Immunofluorescence (IF)	1 µg/mL	3 Publications
Immunohistochemistry (IHC)	1:200	2 Publications
Immunoprecipitation (IP)	2 µg	-
Western Blot (WB)	1:500	10 Publications

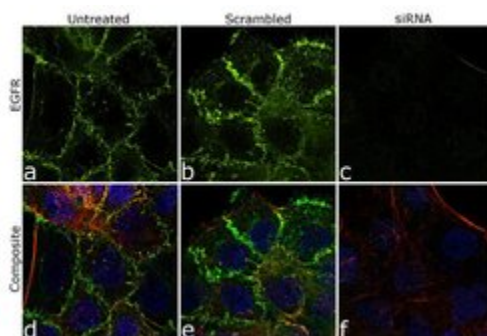
## Product Specific Information

PA1-1110 detects EGFR from human, non-human primate (monkey), mouse, and rat samples. PA1-1110 has been successfully used in Western blot, immunoprecipitation, immunohistochemistry, and immunofluorescence procedures. By Western blot, this antibody detects ~190 kDa protein representing EGFR from human HeLa cell extract. The PA1-1110 immunogen is a synthetic peptide corresponding to residues C L(1198) R V A P Q S S E F I G A(1210) of human EGFR.



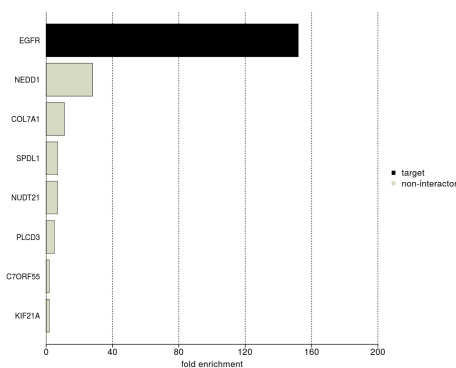
### EGFR Antibody (PA1-1110)

Antibody specificity was demonstrated by showing that antibodies raised against the same target protein perform similarly. Immunofluorescence of EGFR using EGFR Antibody, Rabbit Polyclonal (Product # PA1-1110) along with another EGFR antibody (Product # MA5-14485) shows similar pattern of EGFR expression in A-431 cells. Independent antibody validation info.



### EGFR Antibody (PA1-1110)

Antibody specificity was demonstrated by siRNA mediated knockdown of target protein. A-431 cells were transfected with EGFR siRNA and decrease of signal was observed in ICC using EGFR Rabbit Polyclonal antibody (Product # PA1-1110). Knockdown validation info.



### EGFR Antibody (PA1-1110)

IP-MS enrichment of EGFR (LFQ intensity): EGFR was enriched 152-fold from A549 lysate compared to background proteins, using the optimized IP-MS workflow with Pierce MS-Compatible Magnetic IP Kit protein A/G (Product # 90409) and EGFR antibody (Product # PA1-1110). The STRING database ([www.string-db.org](http://www.string-db.org)) was used to identify the protein interactor list. See more information on IP-MS verification of antibody selectivity. IP-MS validation info.

View more figures on [thermofisher.com](http://thermofisher.com)

## Immunocytochemistry (3)

Proceedings of the National Academy of Sciences of the United States of America

### Chlamydia-induced curvature of the host-cell plasma membrane is required for infection.

"Published figure using EGFR polyclonal antibody (Product # PA1-1110) in Immunocytochemistry"

Authors: Hänisch S, Spona D, Murra G, Köhrer K, Subtil A, Furtado AR, Lichtenthaler SF, Dislich B, Mölleken K, Hegemann JH

**Species**  
Artificial Control

**Dilution**  
Not Cited

**Year**  
2020

Biology of sex differences

### Production of amphiregulin and recovery from influenza is greater in males than females.

"PA1-1110 was used in Immunocytochemistry-immunofluorescence to show that elevated levels of testosterone and amphiregulin, either independently or in combination, improve resilience and contribute to better influenza outcomes in males compared with females."

Authors: Vermillion MS, Ursin RL, Kuok DIT, Vom Steeg LG, Wohlgemuth N, Hall OJ, Fink AL, Sasse E, Nelson A, Ndeh R, McGrath-Morrow S, Mitzner W, Chan MCW, Pekosz A, Klein SL

**Species**  
Mouse

**Dilution**  
1:200

**Year**  
2018

[View more ICC references on thermofisher.com](#)

## Immunofluorescence (3)

Proceedings of the National Academy of Sciences of the United States of America

### Chlamydia-induced curvature of the host-cell plasma membrane is required for infection.

"Published figure using EGFR polyclonal antibody (Product # PA1-1110) in Immunocytochemistry"

Authors: Hänisch S, Spona D, Murra G, Köhrer K, Subtil A, Furtado AR, Lichtenthaler SF, Dislich B, Mölleken K, Hegemann JH

**Species**  
Artificial Control

**Dilution**  
Not Cited

**Year**  
2020

Biology of sex differences

### Production of amphiregulin and recovery from influenza is greater in males than females.

"PA1-1110 was used in Immunocytochemistry-immunofluorescence to show that elevated levels of testosterone and amphiregulin, either independently or in combination, improve resilience and contribute to better influenza outcomes in males compared with females."

Authors: Vermillion MS, Ursin RL, Kuok DIT, Vom Steeg LG, Wohlgemuth N, Hall OJ, Fink AL, Sasse E, Nelson A, Ndeh R, McGrath-Morrow S, Mitzner W, Chan MCW, Pekosz A, Klein SL

**Species**  
Mouse

**Dilution**  
1:200

**Year**  
2018

[View more IF references on thermofisher.com](#)

## More applications with references on thermofisher.com

IHC (2)   WB (10)

For Research Use Only. Not for use in diagnostic procedures. Not for resale without express authorization. Products are warranted to operate or perform substantially in conformance with published Product specifications in effect at the time of sale, as set forth in the Production documentation, specifications and/or accompanying package inserts ("Documentation"). No claim of suitability for use in applications regulated by FDA is made. The warranty provided herein is valid only when used by properly trained individuals. Unless otherwise stated in the Documentation, this warranty is limited to one year from date of shipment when the Product is subjected to normal, proper and intended usage. This warranty does not extend to anyone other than the Buyer. Any model or sample furnished to Buyer is merely illustrative of the general type and quality of goods and does not represent that any Product will conform to such model or sample. NO OTHER WARRANTIES, EXPRESS OR IMPLIED, ARE GRANTED INCLUDING WITHOUT LIMITATION, IMPLIED WARRANTIES OF MERCHANTABILITY, FITNESS FOR ANY PARTICULAR PURPOSE, OR NON INFRINGEMENT. BUYER'S EXCLUSIVE REMEDY FOR NON-CONFORMING PRODUCTS DURING THE WARRANTY PERIOD IS LIMITED TO REPAIR, REPLACEMENT OF OR REFUND FOR THE NON-CONFORMING PRODUCT(S) AT SELLER'S SOLE OPTION. THERE IS NO OBLIGATION TO REPAIR, REPLACE OR REFUND FOR PRODUCTS AS THE RESULT OF (I) ACCIDENT, DISASTER OR EVENT OF FORCE MAJEURE, (II) MISUSE, FAULT OR NEGLIGENCE OF OR BY BUYER, (III) USE OF THE PRODUCTS IN A MANNER FOR WHICH THEY WERE NOT DESIGNED, OR (IV) IMPROPER STORAGE AND HANDLING OF THE PRODUCTS. Unless otherwise expressly stated on the Product or in the documentation accompanying the Product, the Product is intended for research only and is not to be used for any other purpose, including without limitation, unauthorized commercial uses, in vitro diagnostic uses, ex vivo or in vivo therapeutic uses, or any type of consumption by or application to human or animals.