

ErbB2 (HER-2) Antibody Cocktail

Product Details

Size	500 µL
Species	Human
Published Species	Rat, Hamster, Cat, Human, Mouse
Expression System	Mouse / IgG1
Class	Cocktail
Type	Antibody
Clone	e2-4001, 3B5
Conjugate	Unconjugated
Immunogen	Cytoplasmic domain of recombinant human c-erbB-2/HER-2 oncoprotein (e2-4001) and a synthetic peptide from the C-terminus of human c-erbB-2 protein (3B5)
Form	Liquid
Concentration	150 µg/mL
Purification	Protein G
Storage buffer	PBS, pH 7.4, with 0.2% BSA
Contains	0.09% sodium azide
Storage Conditions	4° C
RRID	AB_10977723

Applications	Tested Dilution	Publications
Flow Cytometry (Flow)	1:10-1:100	-
Immunohistochemistry (Paraffin) (IHC (P))	0.25-0.5 µg/mL	3 Publications
Immunoprecipitation (IP)	2 µg/mL	5 Publications
Western Blot (WB)	1 µg/mL	35 Publications
ELISA (ELISA)	-	1 Publication
Immunocytochemistry (ICC)	-	6 Publications
Immunohistochemistry (IHC)	-	65 Publications
Miscellaneous PubMed (Misc)	-	3 Publications

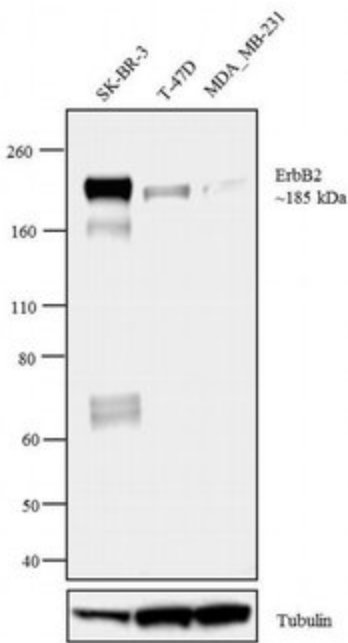
Product Specific Information

MA5-14057 targets HER-2 in IHC (P), IP, ICC/IF, FACS and WB applications and shows reactivity with Human samples.
 The MA5-14057 immunogen is cytoplasmic domain of recombinant human c-erbB-2/HER-2 oncoprotein (e2-4001) and a synthetic peptide from the C-terminus of human c-erbB-2 protein (3B5).

Advanced Verification Data

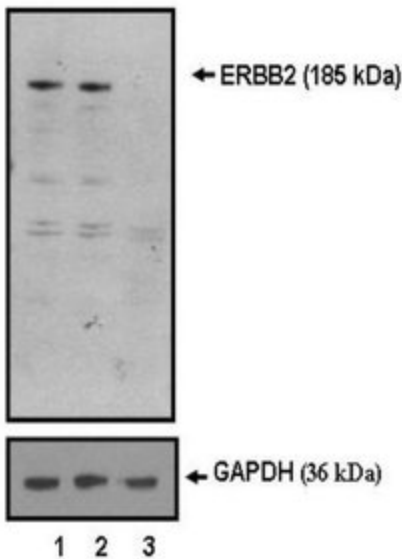
ErbB2 (HER-2) Antibody (MA5-14057)

Antibody specificity was demonstrated by detection of differential basal expression of the target across cell models owing to their inherent genetic constitution. A higher level of expression of ErbB2 was observed in SK-BR-3 compared to T-47D and MDA-MB-231 using ErbB2 Monoclonal Antibody (Product # MA5-14057) in Western Blot. Relative expression validation info.



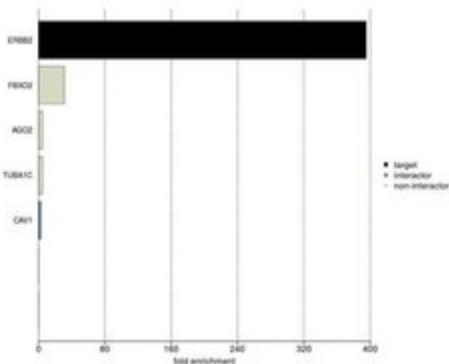
ErbB2 (HER-2) Antibody (MA5-14057)

The specificity of anti-ERBB2 Mouse monoclonal antibody (Product # MA5-14057) was demonstrated by siRNA knockdown. Western blot analysis of A549 extracts using this antibody showed decreased level of ERBB2 protein expression in cells transfected with ERBB2 specific siRNA (lane 3) but not in controls (lane 1 and 2). Knockdown validation info.



ErbB2 (HER-2) Antibody (MA5-14057)

IP-MS enrichment of ERBB2 (LFQ intensity): ERBB2 was enriched 395-fold from HCT116 lysate compared to background proteins, using the optimized IP-MS workflow with Pierce MS-Compatible Magnetic IP Kit protein A/G (Product # 90409) and ERBB2 antibody (Product # MA5-14057). The STRING database (www.string-db.org) was used to identify the protein interactor list. See more information on IP-MS verification of antibody selectivity. IP-MS validation info.



View more figures on thermofisher.com

Immunohistochemistry (65)

Cancer genomics and proteomics

Proteomic Profile of Sorafenib Resistance in Hepatocellular Carcinoma; GRP78 Expression Is Associated With Inferior Response to Sorafenib.

"MA5-14057 was used in Immunohistochemistry to study GRP78 as a biomarker for Sorafenib resistance in treating hepatocellular carcinoma."

Authors: Feng YH,Tung CL,Su YC,Tsao CJ,Wu TF

Species
Human

Dilution
Not Cited

Year
2020

Scientific reports

Differential effect of parity on rat mammary carcinogenesis after pre- or post-pubertal exposure to radiation.

"MA5-14057 was used in Immunohistochemistry to show parity protects against radiation-induced rat mammary carcinogenesis depending on the age at exposure; the mechanisms may involve changes in hormone levels and cancer tissue."

Authors: Takabatake M,Daino K,Imaoka T,Blyth BJ,Kokubo T,Nishimura Y,Showler K,Hosoki A,Moriyama H,Nishimura M,Kakinuma S,Fukushi M,Shimada Y

Species
Rat

Dilution
1:100

Year
2018

[View more IHC references on thermofisher.com](#)

Western Blot (35)

Cancer genomics and proteomics

Proteomic Profile of Sorafenib Resistance in Hepatocellular Carcinoma; GRP78 Expression Is Associated With Inferior Response to Sorafenib.

"MA5-14057 was used in Immunohistochemistry to study GRP78 as a biomarker for Sorafenib resistance in treating hepatocellular carcinoma."

Authors: Feng YH,Tung CL,Su YC,Tsao CJ,Wu TF

Species
Human

Dilution
Not Cited

Year
2020

PloS one

Client Proteins and Small Molecule Inhibitors Display Distinct Binding Preferences for Constitutive and Stress-Induced HSP90 Isoforms and Their Conformationally Restricted Mutants.

"MA5-14057 was used in western blot to characterize distinct binding preferences for constitutive and stress-induced HSP90 isoforms and conformationally restricted mutants in regards to client proteins and small molecule inhibitors"

Authors: Prince TL,Kijima T,Tatokoro M,Lee S,Tsutsumi S,Yim K,Rivas C,Alarcon S,Schwartz H,Khamit-Kush K, Scroggins BT,Beebe K,Trepel JB,Neckers L

Species
Not Applicable

Dilution
Not Cited

Year
2016

[View more WB references on thermofisher.com](#)

More applications with references on thermofisher.com

ICC (6) Misc (3) IP (5) IHC (P) (3) ELISA (1)

For Research Use Only. Not for use in diagnostic procedures. Not for resale without express authorization. Products are warranted to operate or perform substantially in conformance with published Product specifications in effect at the time of sale, as set forth in the Production documentation, specifications and/or accompanying package inserts ("Documentation"). No claim of suitability for use in applications regulated by FDA is made. The warranty provided herein is valid only when used by properly trained individuals. Unless otherwise stated in the Documentation, this warranty is limited to one year from date of shipment when the Product is subjected to normal, proper and intended usage. This warranty does not extend to anyone other than the Buyer. Any model or sample furnished to Buyer is merely illustrative of the general type and quality of goods and does not represent that any Product will conform to such model or sample. NO OTHER WARRANTIES, EXPRESS OR IMPLIED, ARE GRANTED INCLUDING WITHOUT LIMITATION, IMPLIED WARRANTIES OF MERCHANTABILITY, FITNESS FOR ANY PARTICULAR PURPOSE, OR NON INFRINGEMENT. BUYER'S EXCLUSIVE REMEDY FOR NON-CONFORMING PRODUCTS DURING THE WARRANTY PERIOD IS LIMITED TO REPAIR, REPLACEMENT OF OR REFUND FOR THE NON-CONFORMING PRODUCT(S) AT SELLER'S SOLE OPTION. THERE IS NO OBLIGATION TO REPAIR, REPLACE OR REFUND FOR PRODUCTS AS THE RESULT OF (I) ACCIDENT, DISASTER OR EVENT OF FORCE MAJEURE, (II) MISUSE, FAULT OR NEGLIGENCE OF OR BY BUYER, (III) USE OF THE PRODUCTS IN A MANNER FOR WHICH THEY WERE NOT DESIGNED, OR (IV) IMPROPER STORAGE AND HANDLING OF THE PRODUCTS. Unless otherwise expressly stated on the Product or in the documentation accompanying the Product, the Product is intended for research only and is not to be used for any other purpose, including without limitation, unauthorized commercial uses, in vitro diagnostic uses, ex vivo or in vivo therapeutic uses, or any type of consumption by or application to human or animals.