

Bcl-2 Monoclonal Antibody (Bcl-2-100)

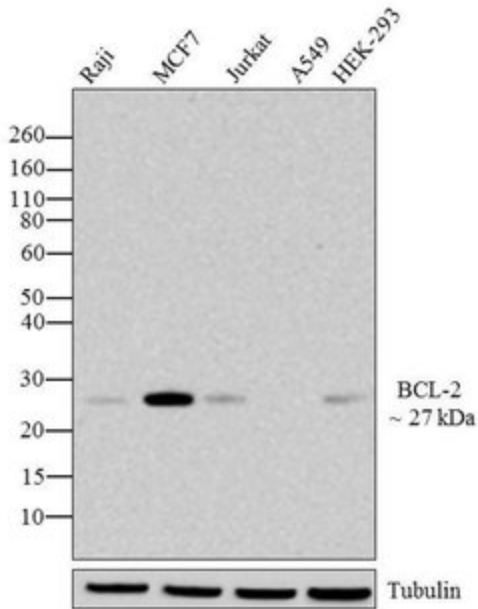
Product Details	
Size	100 µg
Species	Human
Published Species	Rat, Bacteria, Human, Chicken
Expression System	Mouse / IgG1, kappa
Class	Monoclonal
Type	Antibody
Clone	Bcl-2-100
Conjugate	Unconjugated
Immunogen	Synthetic peptide corresponding to residues 41-54 of the human Bcl-2 protein. This sequence is not shared by the mouse Bcl-2 protein.
Form	Liquid
Concentration	0.5 mg/mL
Purification	Affinity chromatography
Storage buffer	PBS, pH 7.4
Contains	0.1% sodium azide
Storage Conditions	-20°C
RRID	AB_2533042

Applications	Tested Dilution	Publications
Flow Cytometry (Flow)	Assay Dependent	1 Publication
Immunofluorescence (IF)	Assay Dependent	1 Publication
Immunohistochemistry (IHC)	Assay Dependent	7 Publications
Immunoprecipitation (IP)	Assay Dependent	2 Publications
Western Blot (WB)	1 µg/mL	14 Publications
Immunocytochemistry (ICC)	-	1 Publication
Immunohistochemistry (Paraffin) (IHC (P))	-	10 Publications
Miscellaneous PubMed (Misc)	-	10 Publications

Product Images For Bcl-2 Monoclonal Antibody (Bcl-2-100)

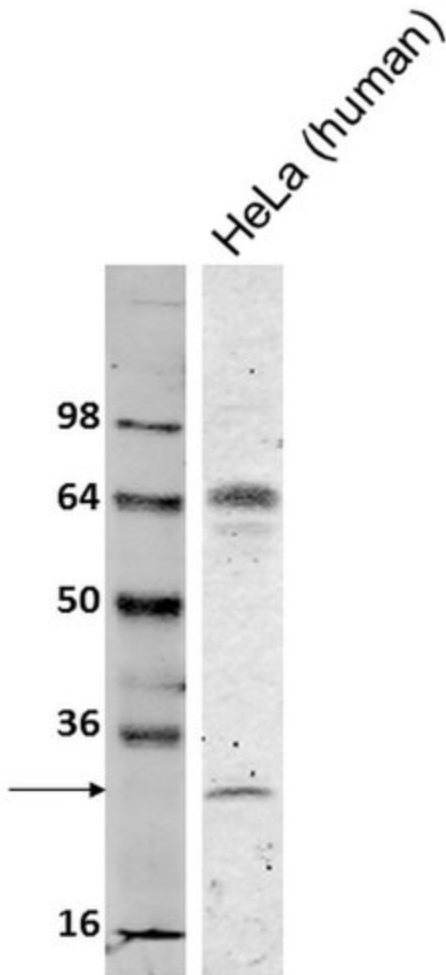
Bcl-2 Antibody (13-8800) in WB

Western blot analysis of BCL-2 was performed by loading 20 µg of Raji (lane1), MCF7 (lane2), Jurkat (lane3), A549 (lane4) and HEK-293 (lane5) cell lysates using Novex® NuPAGE® 4-12 % Bis-Tris gel (Product # NP0321BOX), XCell SureLock Electrophoresis System (Product # EI0002), Novex® Sharp Pre-Stained Protein Standard (Product # LC5800), and iBlot® Dry Blotting System (Product # IB21001). Proteins were transferred to a nitrocellulose membrane and blocked with 5 % skim milk for 1 hour at room temperature. BCL-2 was detected at ~27 kDa using BCL-2 Mouse Monoclonal Antibody (Product # 13-8800) at 1-3 µg/mL dilution in 2.5 % skim milk at 4°C overnight on a rocking platform. Goat anti-Mouse IgG - HRP Secondary Antibody (Product # G-21234) at 1:4000 dilution was used and chemiluminescent detection was performed using Pierce™ ECL Western blotting Substrate (Product # 32106).



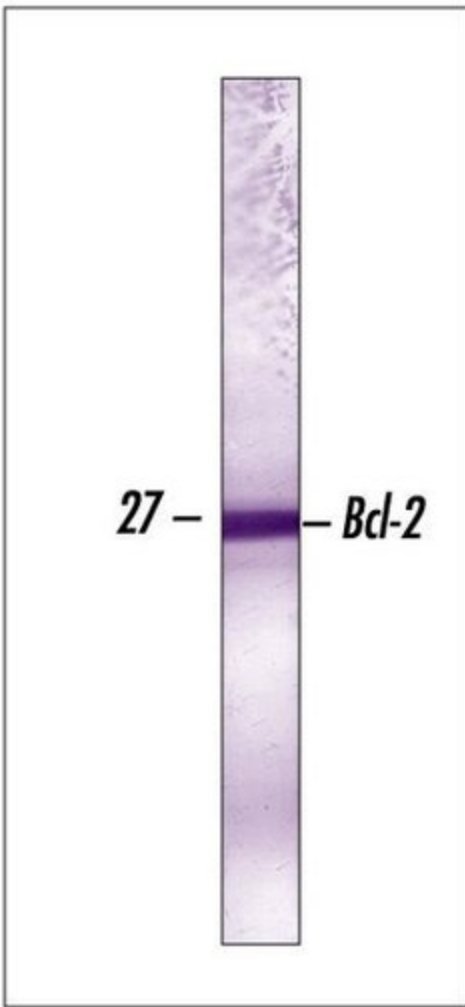
Bcl-2 Antibody (13-8800) in WB

Western blot analysis of Bcl2 was performed by loading 2 µL SeeBlue® Plus2 Prestained Protein Ladder (Product # LC5925) (lane 1) and 50 µg HeLa (lane 2, HeLa (human) cell lysate onto a 10% Tris-Glycine polyacrylamide gel. Proteins were transferred to a nitrocellulose membrane and blocked with 1% BSA/TBST for at least 1 hour at room temperature. Bcl2 was detected using a monoclonal antibody (Product # 13-8800) at a concentration of 1 µg/mL in blocking buffer overnight at 4°C on a rocking platform, followed by a goat anti-mouse IgG Alexa Fluor 680 secondary antibody (Product # A11357) at a dilution of 1:10,000 for at least 1 hour. Fluorescent detection was performed using the Odyssey® CLx imaging system (Li-cor Biosciences). Images generated by Joell Solan in Paul Lampe Lab at Fred Hutchinson Cancer Research Center.



Bcl-2 Antibody (13-8800) in WB

Western blot analysis of Bcl-2 expression in Jurkat cells using Ms x BCI-2.



[View more figures on thermofisher.com](https://www.thermofisher.com)

Flow Cytometry (1)

Stem cells international

Bcl-2 Overexpression Improves Survival and Efficacy of Neural Stem Cell-Mediated Enzyme Prodrug Therapy.

"13-8800 was used in Flow cytometry/Cell sorting to investigate the utility and safety of overexpressing an antiapoptotic protein within tumour-tropic neural stem cells to prolong cell survival after transplantation."

Authors: Mooney R, Majid AA, Mota D, He A, Aramburo S, Flores L, Covello-Batalla J, Machado D, Gonzaga J, Aboody KS

Species
Human
Not Applicable

Dilution
Not Cited
Not Cited

Year
2020

Western Blot (14)

Cancer cell international

Emodin inhibits colon cancer by altering BCL-2 family proteins and cell survival pathways.

"13-8800 was used in Western Blotting to investigate the effect of a natural agent, Emodin, on CoCa."

Authors: Saunders IT, Mir H, Kapur N, Singh S

Species
Human

Dilution
Not Cited

Year
2020

Oncology reports

miRNA1835p.1 promotes the migration and invasion of gastric cancer AGS cells by targeting TPM1.

"Published figure using Bcl-2 monoclonal antibody (Product # 13-8800) in Western Blot"

Authors: Lin J, Shen J, Yue H, Cao Z

Species
Not Applicable

Dilution
Not Cited

Year
2019

[View more WB references on thermofisher.com](#)

Miscellaneous PubMed (10)

General and comparative endocrinology

Direct antiapoptotic effects of growth hormone are mediated by PI3K/Akt pathway in the chicken bursa of Fabricius.

"13-8800 was used in western blot to investigate the role of growth hormone in the Bursa"

Authors: Luna-Acosta JL, Alba-Betancourt C, Martínez-Moreno CG, Ramírez C, Carranza M, Luna M, Arámburo C

Species
Chicken

Dilution
1:1000

Year
2015

[View more Misc references on thermofisher.com](#)

More applications with references on thermofisher.com

IHC (7) IHC (P) (10) IP (2) IF (1) ICC (1)

For Research Use Only. Not for use in diagnostic procedures. Not for resale without express authorization. Products are warranted to operate or perform substantially in conformance with published Product specifications in effect at the time of sale, as set forth in the Production documentation, specifications and/or accompanying package inserts ("Documentation"). No claim of suitability for use in applications regulated by FDA is made. The warranty provided herein is valid only when used by properly trained individuals. Unless otherwise stated in the Documentation, this warranty is limited to one year from date of shipment when the Product is subjected to normal, proper and intended usage. This warranty does not extend to anyone other than the Buyer. Any model or sample furnished to Buyer is merely illustrative of the general type and quality of goods and does not represent that any Product will conform to such model or sample. NO OTHER WARRANTIES, EXPRESS OR IMPLIED, ARE GRANTED INCLUDING WITHOUT LIMITATION, IMPLIED WARRANTIES OF MERCHANTABILITY, FITNESS FOR ANY PARTICULAR PURPOSE, OR NON INFRINGEMENT. BUYER'S EXCLUSIVE REMEDY FOR NON-CONFORMING PRODUCTS DURING THE WARRANTY PERIOD IS LIMITED TO REPAIR, REPLACEMENT OF OR REFUND FOR THE NON-CONFORMING PRODUCT(S) AT SELLER'S SOLE OPTION. THERE IS NO OBLIGATION TO REPAIR, REPLACE OR REFUND FOR PRODUCTS AS THE RESULT OF (I) ACCIDENT, DISASTER OR EVENT OF FORCE MAJEURE, (II) MISUSE, FAULT OR NEGLIGENCE OF OR BY BUYER, (III) USE OF THE PRODUCTS IN A MANNER FOR WHICH THEY WERE NOT DESIGNED, OR (IV) IMPROPER STORAGE AND HANDLING OF THE PRODUCTS. Unless otherwise expressly stated on the Product or in the documentation accompanying the Product, the Product is intended for research only and is not to be used for any other purpose, including without limitation, unauthorized commercial uses, in vitro diagnostic uses, ex vivo or in vivo therapeutic uses, or any type of consumption by or application to human or animals.