

Product datasheet

Anti-Vimentin antibody [EPR3776] - Cytoskeleton Marker ab92547

KO VALIDATED Recombinant RabMAB

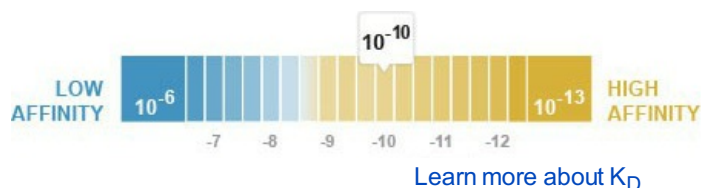
★★★★★ 55 Abreviews 640 References 27 Images

Overview

Product name	Anti-Vimentin antibody [EPR3776] - Cytoskeleton Marker
Description	Rabbit monoclonal [EPR3776] to Vimentin - Cytoskeleton Marker
Host species	Rabbit
Tested applications	Suitable for: ICC/IF, WB, Flow Cyt, IHC-P
Species reactivity	Reacts with: Mouse, Rat, Human Predicted to work with: Rhesus monkey
Immunogen	Synthetic peptide within Human Vimentin aa 400 to the C-terminus (C terminal) (acetyl). The exact sequence is proprietary. Database link: P08670
Positive control	WB: HeLa, HEK293, Jurkat, A549, NIH3T3, PC12, HUVEC, Daudi, Caco-2 and COS-1 cell lysates; mouse and rat brain tissue lysates. IHC-P: Human kidney, colon, breast adenocarcinoma, cervical carcinoma and ovarian cancer tissues, mouse brain and kidney, E17 rat cheek and rat skin tissue sections; Rhesus monkey retina tissue. IHC-Fr: Mouse testis tissue. ICC/IF: HeLa, human adenocarcinoma, human schlemms canal endothelium and wild-type HAP1 cells. Flow Cyt: HeLa cells.
General notes	This product is a recombinant monoclonal antibody, which offers several advantages including: <ul style="list-style-type: none"> - High batch-to-batch consistency and reproducibility - Improved sensitivity and specificity - Long-term security of supply - Animal-free production For more information see here . Our RabMAB [®] technology is a patented hybridoma-based technology for making rabbit monoclonal antibodies. For details on our patents, please refer to RabMAB[®] patents . We are constantly working hard to ensure we provide our customers with best in class antibodies. As a result of this work we are pleased to now offer this antibody in purified format. We are in the process of updating our datasheets. The purified format is designated 'PUR' on our product labels. If you have any questions regarding this update, please contact our Scientific Support team.

Properties

Form	Liquid
Storage instructions	Shipped at 4°C. Store at +4°C short term (1-2 weeks). Upon delivery aliquot. Store at -20°C. Avoid freeze / thaw cycle.
Dissociation constant (K_D)	K _D = 1.10 x 10 ⁻¹⁰ M



Storage buffer	pH: 7.20 Preservative: 0.01% Sodium azide Constituents: 59% PBS, 40% Glycerol, 0.05% BSA
Purity	Protein A purified
Clonality	Monoclonal
Clone number	EPR3776
Isotype	IgG

Applications

Our [Abpromise guarantee](#) covers the use of **ab92547** in the following tested applications.

The application notes include recommended starting dilutions; optimal dilutions/concentrations should be determined by the end user.

Application	Abreviews	Notes
ICC/IF	★★★★★	1/250 - 1/1000.
WB	★★★★☆	1/1000 - 1/5000. Predicted molecular weight: 54 kDa.
Flow Cyt	★★★★☆	1/50 - 1/500. ab172730 - Rabbit monoclonal IgG, is suitable for use as an isotype control with this antibody.
IHC-P	★★★★★	1/200 - 1/500. Perform heat mediated antigen retrieval with citrate buffer pH 6 before commencing with IHC staining protocol.

Target

Function	Vimentins are class-III intermediate filaments found in various non-epithelial cells, especially mesenchymal cells. Vimentin is attached to the nucleus, endoplasmic reticulum, and mitochondria, either laterally or terminally. Involved with LARP6 in the stabilization of type I collagen mRNAs for CO1A1 and CO1A2.
Tissue specificity	Highly expressed in fibroblasts, some expression in T- and B-lymphocytes, and little or no expression in Burkitt's lymphoma cell lines. Expressed in many hormone-independent mammary carcinoma cell lines.
Involvement in disease	Cataract 30

Sequence similarities

Belongs to the intermediate filament family.

Domain

The central alpha-helical coiled-coil rod region mediates elementary homodimerization. The [IL]-x-C-x-x-[DE] motif is a proposed target motif for cysteine S-nitrosylation mediated by the iNOS-S100A8/A9 transnitrosylase complex.

Post-translational modifications

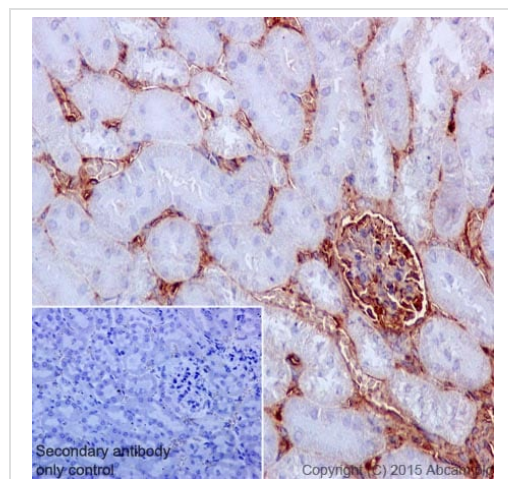
Filament disassembly during mitosis is promoted by phosphorylation at Ser-55 as well as by nestin (By similarity). One of the most prominent phosphoproteins in various cells of mesenchymal origin. Phosphorylation is enhanced during cell division, at which time vimentin filaments are significantly reorganized. Phosphorylation by PKN1 inhibits the formation of filaments. Phosphorylated at Ser-56 by CDK5 during neutrophil secretion in the cytoplasm. Phosphorylated by STK33. O-glycosylated during cytokinesis at sites identical or close to phosphorylation sites, this interferes with the phosphorylation status. S-nitrosylation is induced by interferon-gamma and oxidatively-modified low-density lipoprotein (LDL(ox)) possibly implicating the iNOS-S100A8/9 transnitrosylase complex.

Cellular localization

Cytoplasm.

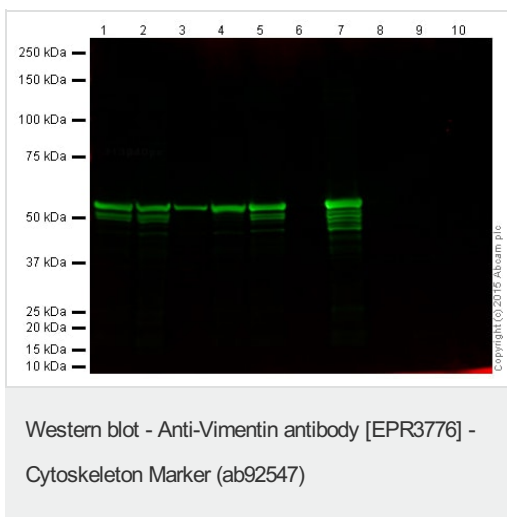
Form

Vimentin is found in connective tissue and in the cytoskeleton.

Images

Immunohistochemical staining of paraffin embedded mouse kidney with purified ab92547 at a working dilution of 1/250. The secondary antibody used is [Goat Anti-Rabbit IgG H&L \(HRP\) \(ab97051\) secondary antibody](#) at 1/500. The sample is counter-stained with hematoxylin. Antigen retrieval was performed using Tris-EDTA buffer, pH 9.0. PBS was used instead of the primary antibody as the negative control, and is shown in the inset.

Immunohistochemistry (Formalin/PFA-fixed paraffin-embedded sections) - Anti-Vimentin antibody [EPR3776] - Cytoskeleton Marker (ab92547)



All lanes : Anti-Vimentin antibody [EPR3776] - Cytoskeleton Marker (ab92547) at 1/1000 dilution (unpurified)

Lane 1 : HeLa (Human epithelial cell line from cervix adenocarcinoma) Whole Cell Lysate

Lane 2 : HEK293 (Human epithelial cell line from embryonic kidney) Whole Cell Lysate

Lane 3 : Jurkat (Human T cell lymphoblast-like cell line) Whole cell lysate

Lane 4 : A549 (Human lung carcinoma cell line) Whole cell lysate

Lane 5 : NIH 3T3 (Mouse embryonic fibroblast cell line) Whole Cell Lysate

Lane 6 : PC12 (Rat adrenal gland pheochromocytoma cell line) Whole Cell Lysate

Lane 7 : HUVEC (Human umbilical vein endothelial cell line) Whole cell lysate

Lane 8 : A431 (Human epidermoid carcinoma cell line) Whole cell lysate

Lane 9 : Daudi (Human Burkitt's lymphoma cell line) Whole cell lysate

Lane 10 : Caco 2 (Human colorectal adenocarcinoma cell line) Whole Cell Lysate

Lysates/proteins at 20 µg per lane.

Secondary

All lanes : IRDye® 800CW Goat Anti-Rabbit at 1/10000 dilution

Performed under reducing conditions.

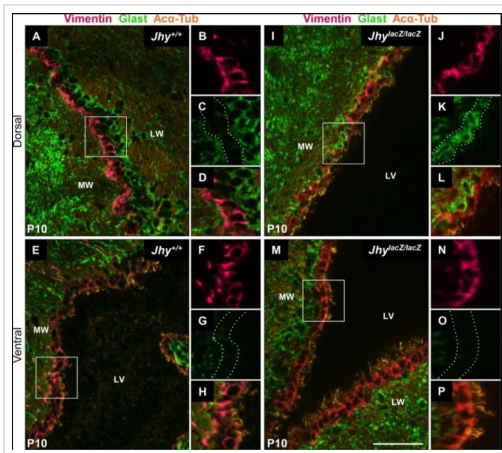
Predicted band size: 54 kDa

Observed band size: 53 kDa

[why is the actual band size different from the predicted?](#)

This blot was produced using a 4-12% Bis-tris gel under the MOPS buffer system. The gel was run at 200V for 50 minutes before being transferred onto a Nitrocellulose membrane at 30V for 70 minutes. The membrane was then blocked for an hour using LI-COR® blocking buffer before being incubated with ab92547 overnight at 4°C. Antibody binding was detected using the IRDye® 800CW Goat Anti-Rabbit secondary at a 1:10,000 dilution for 1hr at room temperature and then imaged using the Odyssey® CLx Imaging

System.

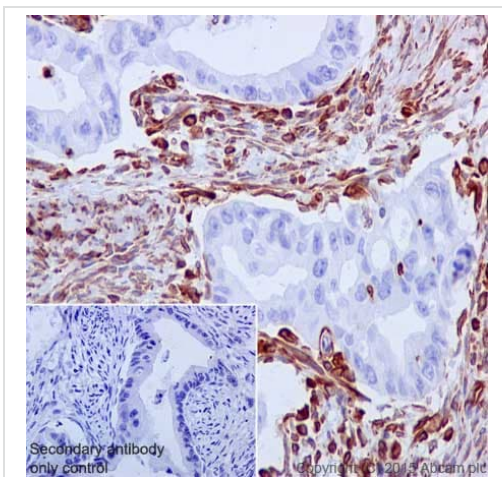


Immunohistochemistry (Formalin/PFA-fixed paraffin-embedded sections) - Anti-Vimentin antibody [EPR3776] - Cytoskeleton Marker (ab92547)

Image from Muniz-Talavera H and Schmidt JV, PLoS One. 2017;12(12):e0184957. Fig 3.; doi: 10.1371/journal.pone.0184957. Reproduced under the Creative Commons license <http://creativecommons.org/licenses/by/4.0/>

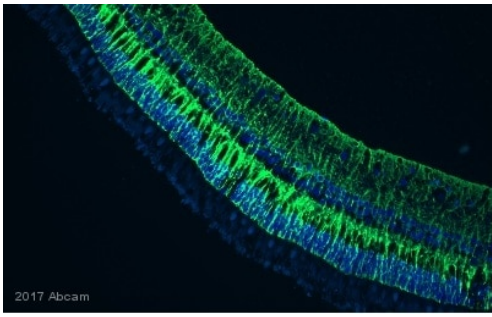
Jhy^{lacZ/lacZ} mice exhibit delayed radial glial to ependymal cell differentiation.

Immunohistochemical analysis of P10 lateral ventricle coronal sections from *Jhy^{+/+}* (A, E) and *Jhy^{lacZ/lacZ}* (I, M) mice for expression of Vimentin (pink, ab92547), Glast (green) and Aca-Tub (orange) in dorsal (A-D, I-L) and ventral (E-H, M-P) brain regions. Lower right panels (D, L, H, P) represent a higher magnification view of the merged image. In *Jhy^{+/+}*, medial wall dorsal and ventral cells express the differentiated ependymal markers Vimentin (A, B, E, F) and Aca-Tub (A, D, E, H), but are negative for the radial glial marker Glast (A, C, E, G). In *Jhy^{lacZ/lacZ}* brains, some dorsal cells remain positive for the undifferentiated marker Glast (I, K), while also expressing the differentiated markers Vimentin and Aca-Tub (I, J, L). *Jhy^{lacZ/lacZ}* ventral cells express only Vimentin and Aca-Tub (M-P). The dotted line indicates the medial wall ependymal cells in (C, G, K, O). (Q-R) Graphical representation of the percentage of Glast(-)Vimentin(+)Aca-Tub(+) (black bar) and Glast(+)Vimentin(+)Aca-Tub(+) (grey bar) cells in dorsal (Q) and ventral (R) ependymal cells. MW, medial wall; LW, lateral wall; LV, lateral ventricle; * denotes $p \leq 0.05$. Scale bars: 50 μ m (A-P).



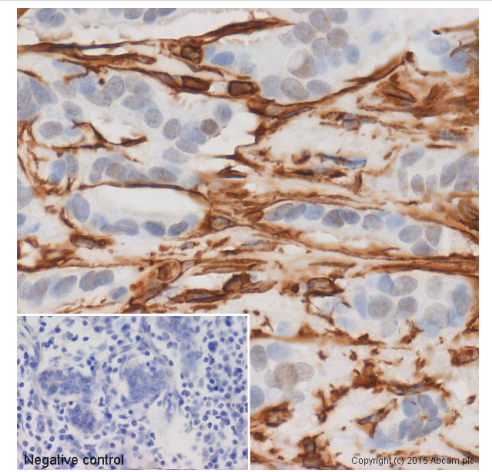
Immunohistochemistry (Formalin/PFA-fixed paraffin-embedded sections) - Anti-Vimentin antibody [EPR3776] - Cytoskeleton Marker (ab92547)

Immunohistochemical staining of paraffin embedded human cervical carcinoma with purified ab92547 at a working dilution of 1/250. The secondary antibody used is HRP goat anti-rabbit IgG H&L (ab97051) at 1/500. The sample is counter-stained with hematoxylin. Antigen retrieval was performed using Tris-EDTA buffer, pH 9.0. PBS was used instead of the primary antibody as the negative control, and is shown in the inset.



Immunohistochemistry (Formalin/PFA-fixed paraffin-embedded sections) - Anti-Vimentin antibody [EPR3776] - Cytoskeleton Marker (ab92547)

Immunohistochemical staining of paraffin embedded paraformaldehyde fixed rhesus monkey retina tissue with ab92547 (green) at a working dilution of 1/200. The sample was incubated with the primary antibody for 20 hours, at 4°C in 2.5% serum. The secondary antibody used is a Goat anti-rabbit AlexaFluor 488 at 1/400. Heat mediated antigen retrieval was performed using citrate pH 6. Tissue was blocked with 5% serum for 1 hour 30 minutes at 25°C

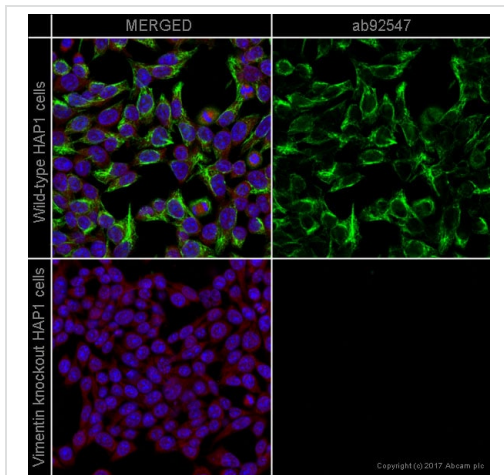


Immunohistochemistry (Formalin/PFA-fixed paraffin-embedded sections) - Anti-Vimentin antibody [EPR3776] - Cytoskeleton Marker (ab92547)

IHC image of unpurified ab92547 staining Vimentin in human breast adenocarcinoma formalin-fixed paraffin-embedded tissue sections*, performed on a Leica Bond. The section was pre-treated using heat mediated antigen retrieval with sodium citrate buffer (pH6, epitope retrieval solution 1) for 20 mins. The section was then incubated with ab92547, 1/200 dilution, for 15 mins at room temperature and detected using an HRP conjugated compact polymer system. DAB was used as the chromogen. The section was then counterstained with haematoxylin and mounted with DPX. No primary antibody was used in the negative control (shown on the inset).

For other IHC staining systems (automated and non-automated) customers should optimize variable parameters such as antigen retrieval conditions, primary antibody concentration and antibody incubation times.

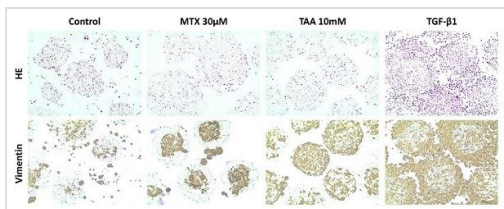
*Tissue obtained from the Human Research Tissue Bank, supported by the NIHR Cambridge Biomedical Research Centre



Immunocytochemistry/ Immunofluorescence - Anti-Vimentin antibody [EPR3776] - Cytoskeleton Marker (ab92547)

ab92547 staining Vimentin in wild-type HAP1 cells (top panel) and VIM knockout HAP1 cells (bottom panel). The cells were fixed with 100% methanol (5min), permeabilized with 0.1% Triton X-100 for 5 minutes and then blocked with 1% BSA/10% normal goat serum/0.3M glycine in 0.1% PBS-Tween for 1h. The cells were then incubated with ab92547 at 0.5µg/ml and ab195889 at 1/250 dilution (shown in pseudocolour red) overnight at +4°C, followed by a further incubation at room temperature for 1h with Goat Anti-Rabbit IgG H&L (Alexa Fluor® 488) preadsorbed (ab150081) secondary antibody at 2 µg/ml (shown in green). Nuclear DNA was labelled in blue with DAPI.

Image was taken with a confocal microscope (Leica-Microsystems, TCS SP8).



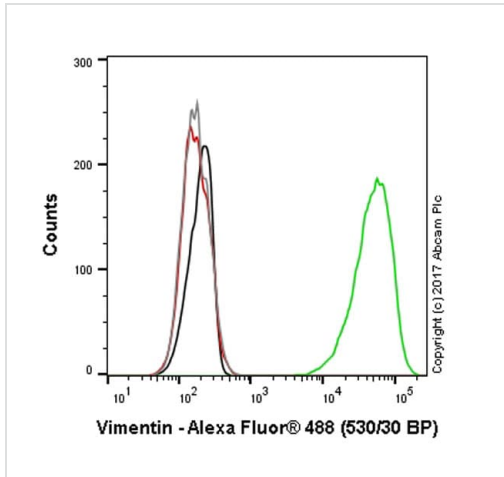
Immunohistochemistry (Formalin/PFA-fixed paraffin-embedded sections) - Anti-Vimentin antibody [EPR3776] - Cytoskeleton Marker (ab92547)

Image from Prestigiacomo Vet et al., PLoS One. 2017;12(6):e0179995. Fig 7.; doi: 10.1371/journal.pone.0179995.

Immunostaining of formalin fixed paraffin embedded human microtissues after exposure to MTX, TAA and TGF-β1.

Formalin fixed paraffin embedded slides of HepaRG/THP-1 macrophages/hTERT-HSC microtissues were stained with Hematoxylin & Eosin (H&E) and vimentin after 14 days of treatment with MTX, TAA and TGF-β1. Microtissues were fixed in 4% PFA and embedded in 2% agarose prior to paraffinization. Microtissues showed increase in the vimentin positive cells after MTX, TAA and TGF-β1 exposure. Vimentin stainings show proliferation of stellate cells and THP-1 macrophages in the microtissues, suggesting the onset of inflammation process.

For full image see PMID 28665955.

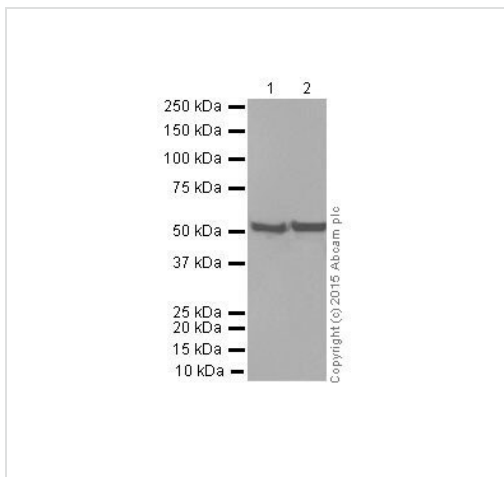


Flow Cytometry - Anti-Vimentin antibody [EPR3776]
- Cytoskeleton Marker (ab92547)

Overlay histogram showing HAP1 wildtype (green line) and HAP1-VIM knockout cells (red line) stained with ab92547. The cells were fixed with 80% methanol (5 min) and then permeabilized with 0.1% PBS-Triton X-100 for 15 min. The cells were then incubated in 1x PBS / 10% normal goat serum to block non-specific protein-protein interactions followed by the antibody (ab92547, 0.5µg/ml) for 30 min at 22°C. The secondary antibody used was [Goat Anti-Rabbit IgG H&L \(Alexa Fluor® 488\) preadsorbed \(ab150081\) secondary antibody](#) at 1/2000 dilution for 30 min at 22°C.

A Rabbit IgG isotype control antibody ([ab172730](#)) was used at the same concentration and conditions as the primary antibody (HAP1 wildtype - black line, HAP1-VIM knockout - grey line). Unlabelled sample was also used as a control (this line is not shown for the purpose of simplicity).

Acquisition of >5,000 events were collected using a 50 mW Blue laser (488nm) and 530/30 bandpass filter.



Western blot - Anti-Vimentin antibody [EPR3776] -
Cytoskeleton Marker (ab92547)

All lanes : Anti-Vimentin antibody [EPR3776] - Cytoskeleton Marker (ab92547) at 1/5000 dilution (purified)

Lane 1 : HeLa (Human epithelial cell line from cervix adenocarcinoma) cell lysate

Lane 2 : HEK293 (Human epithelial cell line from embryonic kidney) cell lysate

Lysates/proteins at 20 µg per lane.

Secondary

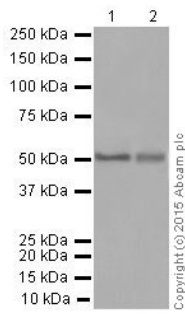
All lanes : HRP goat anti-rabbit IgG (H+L) at 1/1000 dilution

Predicted band size: 54 kDa

Observed band size: 54 kDa

Blocking buffer: 5% NFDm/TBST

Dilution buffer: 5% NFDm/TBST



Western blot - Anti-Vimentin antibody [EPR3776] - Cytoskeleton Marker (ab92547)

All lanes : Anti-Vimentin antibody [EPR3776] - Cytoskeleton Marker (ab92547) at 1/5000 dilution (purified)

Lane 1 : Mouse brain lysate

Lane 2 : Rat brain lysate

Secondary

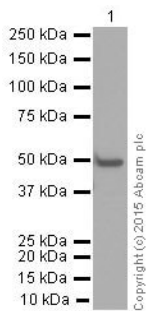
All lanes : HRP goat anti-rabbit IgG (H+L) at 1/1000 dilution

Predicted band size: 54 kDa

Observed band size: 54 kDa

Blocking buffer: 5% NFDm/TBST

Dilution buffer: 5% NFDm/TBST



Western blot - Anti-Vimentin antibody [EPR3776] - Cytoskeleton Marker (ab92547)

Anti-Vimentin antibody [EPR3776] - Cytoskeleton Marker (ab92547) at 1/20000 dilution (purified) + COS-1 (African green monkey kidney fibroblast-like cell line) cell lysate at 20 µg

Secondary

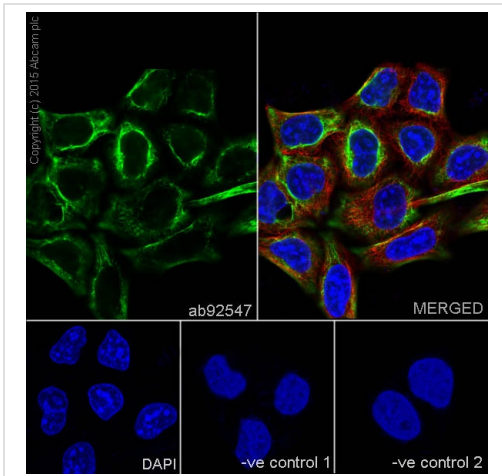
HRP goat anti-rabbit IgG (H+L) at 1/1000 dilution

Predicted band size: 54 kDa

Observed band size: 54 kDa

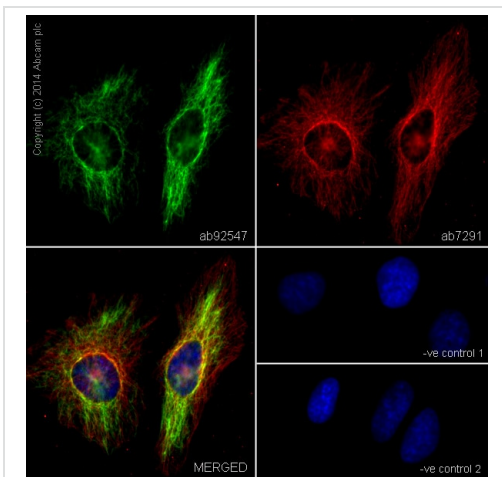
Blocking buffer: 5% NFDm/TBST

Dilution buffer: 5% NFDm/TBST



Immunocytochemistry/ Immunofluorescence - Anti-Vimentin antibody [EPR3776] - Cytoskeleton Marker (ab92547)

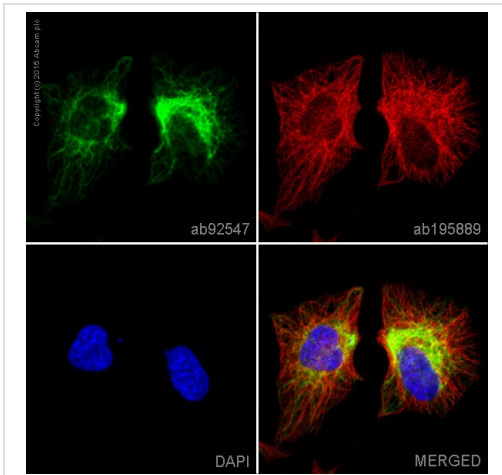
Immunofluorescence staining of HeLa (human epithelial cell line from cervix adenocarcinoma) cells with purified ab92547 at a working dilution of 1/250, counter-stained with DAPI. The secondary antibody was [Goat Anti-Rabbit IgG H&L \(Alexa Fluor® 488\) \(ab150077\) secondary antibody](#), used at a dilution of 1/1000. [ab7291](#), a mouse anti-tubulin antibody (1/1000), was used to stain tubulin along with [Goat Anti-Mouse IgG H&L \(Alexa Fluor® 594\) preadsorbed \(ab150120\) 1/1000](#), shown in the top right hand panel. The cells were fixed in 4% PFA and permeabilized using 0.1% Triton X 100. The negative controls are shown in bottom middle and right hand panels - for negative control 1, purified ab92547 was used at a dilution of 1/500 followed by [Goat Anti-Mouse IgG H&L \(Alexa Fluor® 594\) preadsorbed \(ab150120\)](#) at a dilution of 1/500. For negative control 2, [ab7291](#) (mouse anti-tubulin) was used at a dilution of 1/500 followed by [Goat Anti-Rabbit IgG H&L \(Alexa Fluor® 488\) \(ab150077\) secondary antibody](#) at a dilution of 1/400.



Immunocytochemistry/ Immunofluorescence - Anti-Vimentin antibody [EPR3776] - Cytoskeleton Marker (ab92547)

ab92547 staining Vimentin in HeLa (human epithelial cell line from cervix adenocarcinoma) cells. The cells were fixed with 100% methanol (5min) and then blocked in 1% BSA/10% normal goat serum/0.3M glycine in 0.1%PBS-Tween for 1h. The cells were then incubated with ab92547 at 5µg/ml and [ab7291](#) at 1µg/ml overnight at +4°C, followed by a further incubation at room temperature for 1h with [Goat Anti-Rabbit IgG H&L \(Alexa Fluor® 488\) preadsorbed \(ab150081\) secondary antibody](#) at 2 µg/ml (shown in green) and [Goat Anti-Mouse IgG H&L \(Alexa Fluor® 594\) preadsorbed \(ab150120\)](#) at 2 µg/ml (shown in pseudo color red). Nuclear DNA was labelled in blue with DAPI.

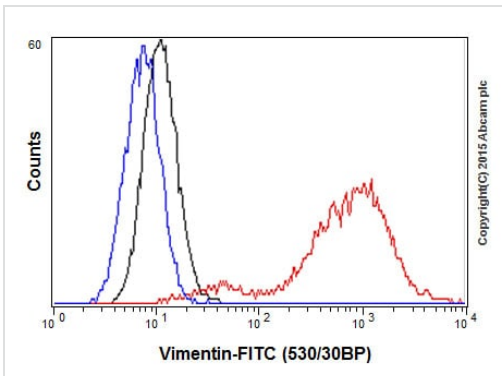
Negative controls: 1– Rabbit primary antibody and anti-mouse secondary antibody; 2 – Mouse primary antibody and anti-rabbit secondary antibody. Controls 1 and 2 indicate that there is no unspecific reaction between primary and secondary antibodies used.



Immunocytochemistry/ Immunofluorescence - Anti-Vimentin antibody [EPR3776] - Cytoskeleton Marker (ab92547)

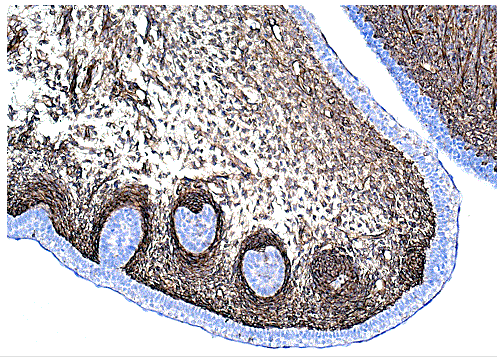
Unpurified ab92547 staining Vimentin in HeLa cells. The cells were fixed with 100% methanol (5 min), permeabilized in 0.1% Triton X-100 for 5 minutes and then blocked in 1% BSA/10% normal goat serum/0.3M glycine in 0.1% PBS-Tween for 1h. The cells were then incubated with ab92547 at a working concentration of 5µg/ml and ab195889, Mouse monoclonal [DM1A] to alpha Tubulin (Alexa Fluor® 594, shown in red) at 1/250 overnight at +4°C, followed by a further incubation at room temperature for 1h with Goat Anti-Rabbit IgG H&L (Alexa Fluor® 488) preadsorbed (ab150081) secondary antibody at 2 µg/ml (shown in green). Nuclear DNA was labelled in blue with DAPI.

Image was taken with a confocal microscope (Leica-Microsystems, TCS SP8).



Flow Cytometry - Anti-Vimentin antibody [EPR3776] - Cytoskeleton Marker (ab92547)

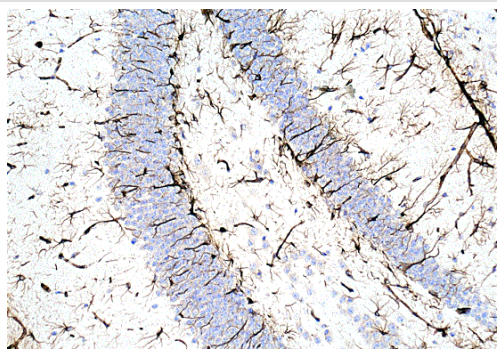
Overlay histogram showing HeLa cells fixed in 2% PFA and stained with purified ab92547 at a dilution of 1 in 50 (red line). The secondary antibody used was FITC goat anti-rabbit at a dilution of 1 in 500. Rabbit monoclonal IgG was used as an isotype control (black line) and cells incubated in the absence of both primary and secondary antibody were used as a negative control (blue line).



Immunohistochemistry (Formalin/PFA-fixed paraffin-embedded sections) - Anti-Vimentin antibody [EPR3776] - Cytoskeleton Marker (ab92547)

Anti-vimentin (ab92547) staining in E17 rat cheek sections using immunohistochemistry (formaldehyde-fixed, paraffin-embedded sections). Heat-mediated antigen retrieval was carried out using citric acid. Samples were incubated with primary antibody (1/2000) for two hours at room temperature. A biotin-conjugated goat anti-rabbit IgG polyclonal was used as the secondary antibody.

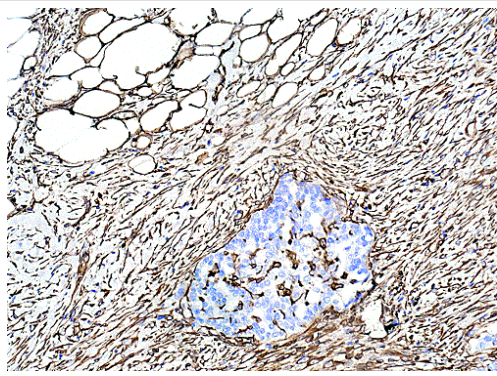
Image courtesy of Mr Carl Hobbs, Kings College London.



Immunohistochemistry (Formalin/PFA-fixed paraffin-embedded sections) - Anti-Vimentin antibody [EPR3776] - Cytoskeleton Marker (ab92547)

Anti-vimentin (ab92547) staining in adult mouse brain (the dentate gyrus region of the hippocampus) using immunohistochemistry (formaldehyde-fixed, paraffin-embedded sections). Heat-mediated antigen retrieval was carried out using citric acid. Samples were incubated with primary antibody (1/2000) for two hours at room temperature. A biotin-conjugated goat anti-rabbit IgG polyclonal was used as the secondary antibody.

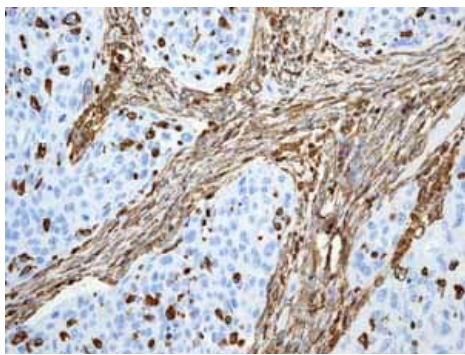
Image courtesy of Mr Carl Hobbs, Kings College London.



Immunohistochemistry (Formalin/PFA-fixed paraffin-embedded sections) - Anti-Vimentin antibody [EPR3776] - Cytoskeleton Marker (ab92547)

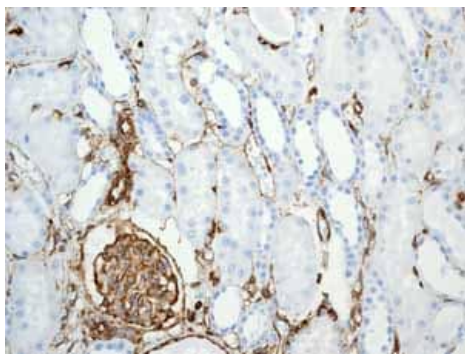
Anti-vimentin (ab92547) staining in human ovarian cancer tissue using immunohistochemistry (formaldehyde-fixed, paraffin-embedded sections). Heat-mediated antigen retrieval was carried out using citric acid. Samples were incubated with primary antibody (1/2000) for two hours at room temperature. A biotin-conjugated goat anti-rabbit IgG polyclonal was used as the secondary antibody.

Image courtesy of Mr Carl Hobbs, Kings College London.



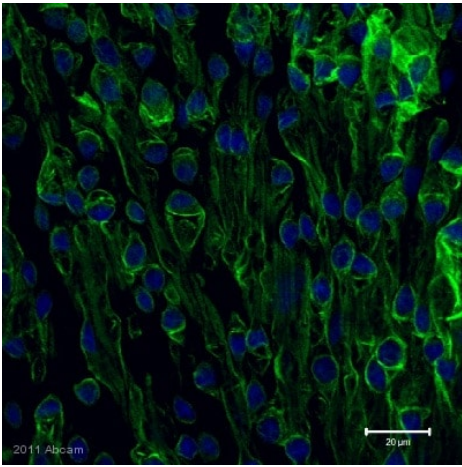
Immunohistochemistry (Formalin/PFA-fixed paraffin-embedded sections) - Anti-Vimentin antibody [EPR3776] - Cytoskeleton Marker (ab92547)

Immunohistochemical analysis of formalin/PFA-fixed paraffin-embedded human cervical carcinoma tissue sections labeling Vimentin with ab92547.



Immunohistochemistry (Formalin/PFA-fixed paraffin-embedded sections) - Anti-Vimentin antibody [EPR3776] - Cytoskeleton Marker (ab92547)

Immunohistochemical analysis of formalin/PFA-fixed paraffin-embedded human kidney tissue sections labeling Vimentin with ab92547.

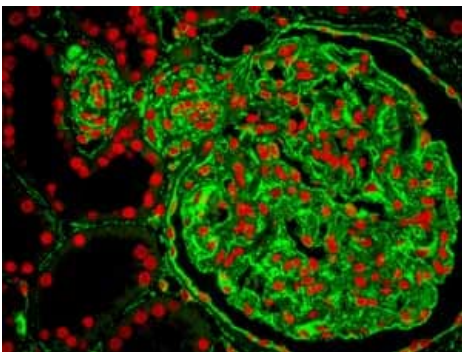


Immunocytochemistry/ Immunofluorescence - Anti-Vimentin antibody [EPR3776] - Cytoskeleton Marker (ab92547)

This image is courtesy of an Abreview submitted by Thomas Read

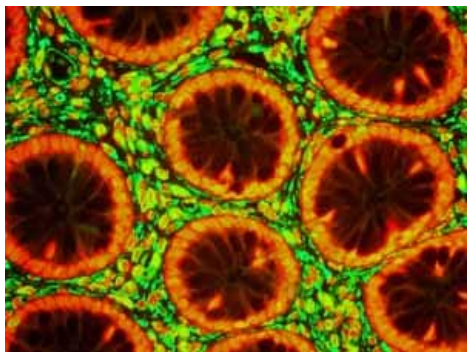
Unpurified ab92547 staining vimentin in human Schlemms Canal Endothelium cells by ICC/IF

(Immunocytochemistry/immunofluorescence). Cells were fixed with formaldehyde, permeabilized with Triton X-100 0.2% and blocked with 10% serum for 30 minutes at 20°C. Samples were incubated with primary antibody (1/200 in DPBS) for 3 hours at 20°C. An undiluted Alexa Fluor[®]488-conjugated Goat anti-rabbit IgG polyclonal was used as the secondary antibody.



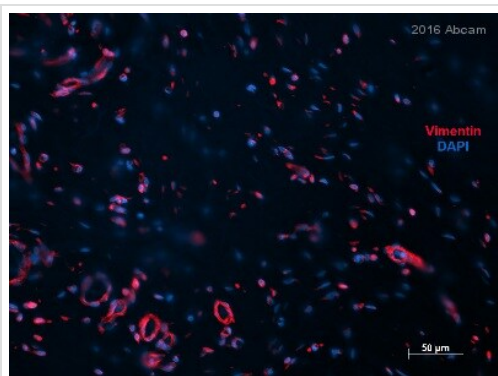
Immunohistochemistry (Formalin/PFA-fixed paraffin-embedded sections) - Anti-Vimentin antibody [EPR3776] - Cytoskeleton Marker (ab92547)

Fluorescent immunohistochemical analysis of paraffin-embedded human normal kidney tissue using unpurified ab92547. Green-Vimentin red-PI.



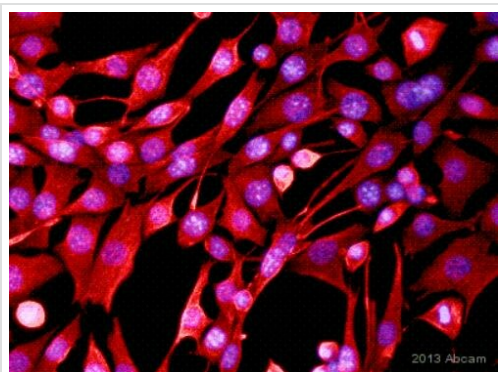
Immunohistochemistry (Formalin/PFA-fixed paraffin-embedded sections) - Anti-Vimentin antibody [EPR3776] - Cytoskeleton Marker (ab92547)

Fluorescent immunohistochemical analysis of paraffin-embedded human normal colon tissue using unpurified ab92547. Green-Vimentin red-PI



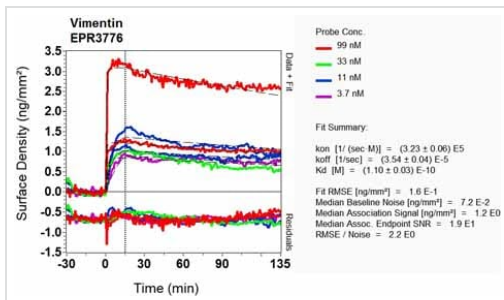
Immunohistochemistry (Formalin/PFA-fixed paraffin-embedded sections) - Anti-Vimentin antibody [EPR3776] - Cytoskeleton Marker (ab92547)
This image is courtesy of an anonymous Abreview.

ab92547 staining Vimentin in rat skin tissue sections by Immunohistochemistry (IHC-P - paraformaldehyde-fixed, paraffin-embedded sections). Tissue was fixed with 10% buffered normal formalin and blocked with 5% serum for 60 minutes at 21 °C; antigen retrieval was by heat mediation in a 10mM Sodium citrate buffer. Samples were incubated with primary antibody (1/200 in blocking buffer) for 12 hours at 4 °C. A Cy3[®]-conjugated donkey anti-rabbit IgG polyclonal (1/200) was used as the secondary antibody.



Immunocytochemistry/ Immunofluorescence - Anti-Vimentin antibody [EPR3776] - Cytoskeleton Marker (ab92547)
Image courtesy of an anonymous Abreview

Immunofluorescence staining of NIH/3T3 (mouse embryo fibroblast cell line) whole cells with ab92547 at 1/1000 dilution in PBS, 1% BSA 0,1% Triton-X-100. The secondary antibody was Alexa Fluor 555 Donkey Anti-Rabbit IgG, used at a dilution of 1/1500. The cells were fixed in formaldehyde and permeabilized using 0.2% Triton X 100. Then blocked with 3% BSA for 30 minutes at room temperature.



Equilibrium dissociation constant (K_D)

Learn more about K_D

[Click here to learn more about \$K_D\$](#)

Other - Anti-Vimentin antibody [EPR3776] -
 Cytoskeleton Marker (ab92547)

Please note: All products are "FOR RESEARCH USE ONLY. NOT FOR USE IN DIAGNOSTIC PROCEDURES"

Our Abpromise to you: Quality guaranteed and expert technical support

- Replacement or refund for products not performing as stated on the datasheet
- Valid for 12 months from date of delivery
- Response to your inquiry within 24 hours
- We provide support in Chinese, English, French, German, Japanese and Spanish
- Extensive multi-media technical resources to help you
- We investigate all quality concerns to ensure our products perform to the highest standards

If the product does not perform as described on this datasheet, we will offer a refund or replacement. For full details of the Abpromise, please visit <https://www.abcam.com/abpromise> or contact our technical team.

Terms and conditions

- Guarantee only valid for products bought direct from Abcam or one of our authorized distributors