

MMP2 Monoclonal Antibody (F14 P4 D3)

Product Details	
Size	100 µg
Species	Human, Rat
Published Species	Bovine, Human
Expression System	Mouse / IgG1
Class	Monoclonal
Type	Antibody
Clone	F14 P4 D3
Conjugate	Unconjugated
Immunogen	Synthetic peptide corresponding to residues T(557) S L G L P P D V Q R V D(569) of human MMP-2.
Form	Liquid
Concentration	1 mg/mL
Purification	Protein A
Storage buffer	PBS with 1mg/mL BSA
Contains	0.05% sodium azide
Storage Conditions	-20° C, Avoid Freeze/Thaw Cycles
RRID	AB_889473

Applications	Tested Dilution	Publications
ELISA (ELISA)	1-2 µg	-
Western Blot (WB)	1:200-1:500	4 Publications

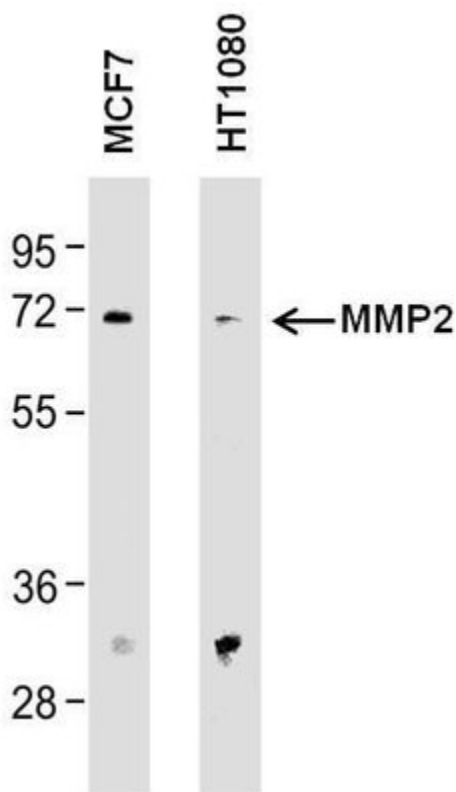
Product Specific Information

MA1-772 contains 100 µg of in vitro produced, protein A purified antibody (1 mg/mL) in PBS containing 1 mg/mL BSA and 0.05% sodium azide. MA1-772 detects MMP-2 from human and rat samples. MA1-772 has been successfully used in Western blot applications. By Western blot, MA1-772 detects a ~50 kDa band representing MMP-2 from WI-38 cell lysate or rat lung samples. The MA1-772 immunogen is a synthetic peptide corresponding to residues T(557) S L G L P P D V Q R V D(569) of human MMP-2. MA1-772 has been successfully used in western blotting and ELISA analysis of MMP2 in human and rat samples. By Western blot, MA1-772 detects a ~74 kDa band representing MMP2 in MCF7 and HT-1080 cell lysate or rat lung.

Product Images For MMP2 Monoclonal Antibody (F14 P4 D3)

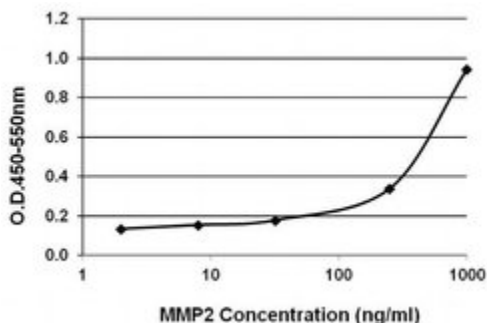
MMP2 Antibody (MA1-772) in WB

Western blot analysis of MMP2 was performed by loading 25 µg of the indicated whole cell lysates and 10 µL Prestained Protein Ladder per well onto a 4-20% Tris-Glycine polyacrylamide gel. Proteins were transferred to a nitrocellulose membrane using the G2 Fast Blotter (Product # 62288) and blocked with 5% Milk/TBST for at least 1 hour at room temperature. MMP2 was detected at ~74 kD using a MMP2 mouse monoclonal antibody (Product # MA1-772) at a concentration of 5 µg/mL in blocking buffer overnight at 4°C on a rocking platform, followed by a goat anti-mouse IgG-HRP secondary antibody (Product # 31430) at a dilution of 1:10,000 for at least 1 hour. Chemiluminescent detection was performed using SuperSignal West Dura (Product # 34076).



MMP2 Antibody (MA1-772) in ELISA

Direct ELISA analysis of MMP2 was performed by coating wells of a 96-well plate with 100 µL per well of recombinant MMP2 protein diluted in carbonate/bicarbonate buffer (Product # 28382) at a concentration of 1 µg/mL overnight at 4°C. Wells of the plate were washed, blocked with StartingBlock blocking buffer (Product # 37538), and incubated with 100 µL per well of a MMP2 mouse monoclonal antibody (Product # MA1-772) at a starting concentration of 1 µg/mL and serially diluting 2-fold to a concentration of 31 ng/mL for 1 hour at 37°C, followed by a goat anti-mouse IgG-HRP secondary antibody (Product # 31430) at a dilution of 1:10,000 for 30 minutes at 37°C. The plate was washed, then detection was performed using 1-Step Ultra TMB substrate (Product # 34028) for 10 minutes at room temperature in the dark. The reaction was stopped with 0.16M sulfuric acid, and absorbances were read on a spectrophotometer at 450-550 nm.



View more figures on thermofisher.com

4 References

Western Blot (4)

Medical science monitor : international medical journal of experimental and clinical research

Silence of Stomatin-Like Protein 2 Represses Migration and Invasion Ability of Human Liver Cancer Cells via Inhibiting the Nuclear Factor Kappa B (NF-B) Pathway.

"MA1-772 was used in Western Blotting to study the potential roles and mechanisms of si-STOML2 in the migration and invasion of human hepatoma LM3 cells."

Authors: Zhu W,Li W,Geng Q,Wang X,Sun W,Jiang H,Pu X

Species
Human

Dilution
1:1200

Year
2018

Cell biology international

Forkhead box C2 promotes the invasion ability of human trophoblast cells through Hedgehog (Hh) signaling pathway.

"Published figure using MMP2 monoclonal antibody (Product # MA1-772) in Western Blot"

Authors: Zhang Y,Zhang Y

Species
Not Applicable

Dilution
Not Cited

Year
2018

[View more WB references on thermofisher.com](#)

For Research Use Only. Not for use in diagnostic procedures. Not for resale without express authorization. Products are warranted to operate or perform substantially in conformance with published Product specifications in effect at the time of sale, as set forth in the Production documentation, specifications and/or accompanying package inserts ("Documentation"). No claim of suitability for use in applications regulated by FDA is made. The warranty provided herein is valid only when used by properly trained individuals. Unless otherwise stated in the Documentation, this warranty is limited to one year from date of shipment when the Product is subjected to normal, proper and intended usage. This warranty does not extend to anyone other than the Buyer. Any model or sample furnished to Buyer is merely illustrative of the general type and quality of goods and does not represent that any Product will conform to such model or sample. NO OTHER WARRANTIES, EXPRESS OR IMPLIED, ARE GRANTED INCLUDING WITHOUT LIMITATION, IMPLIED WARRANTIES OF MERCHANTABILITY, FITNESS FOR ANY PARTICULAR PURPOSE, OR NON-INFRINGEMENT. BUYER'S EXCLUSIVE REMEDY FOR NON-CONFORMING PRODUCTS DURING THE WARRANTY PERIOD IS LIMITED TO REPAIR, REPLACEMENT OF OR REFUND FOR THE NON-CONFORMING PRODUCT(S) AT SELLER'S SOLE OPTION. THERE IS NO OBLIGATION TO REPAIR, REPLACE OR REFUND FOR PRODUCTS AS THE RESULT OF (I) ACCIDENT, DISASTER OR EVENT OF FORCE MAJEURE, (II) MISUSE, FAULT OR NEGLIGENCE OF OR BY BUYER, (III) USE OF THE PRODUCTS IN A MANNER FOR WHICH THEY WERE NOT DESIGNED, OR (IV) IMPROPER STORAGE AND HANDLING OF THE PRODUCTS. Unless otherwise expressly stated on the Product or in the documentation accompanying the Product, the Product is intended for research only and is not to be used for any other purpose, including without limitation, unauthorized commercial uses, in vitro diagnostic uses, ex vivo or in vivo therapeutic uses, or any type of consumption by or application to human or animals.