

# RhoA Monoclonal Antibody (1B8-1C7)

| Product Details    |   |
|--------------------|---|
| Size               | 100 µg  |
| Species            | Human, Mouse, Rat                             |
| Published Species  | Human   |
| Expression System  | Mouse / IgG1                                  |
| Class              | Monoclonal                                    |
| Type               | Antibody                                      |
| Clone              | 1B8-1C7                                       |
| Conjugate          | Unconjugated                                  |
| Immunogen          | Full-length recombinant His-tagged human RhoA |
| Form               | Liquid  |
| Concentration      | 1 mg/mL                                       |
| Purification       | Protein A                                     |
| Storage buffer     | PBS with 1mg/mL BSA                           |
| Contains           | 0.05% sodium azide                            |
| Storage Conditions | -20°C   |
| RRID               | AB_2536840                                    |

| Applications      | Tested Dilution | Publications   |
|-------------------|-----------------|----------------|
| Western Blot (WB) | 1:500-1:2000    | 2 Publications |

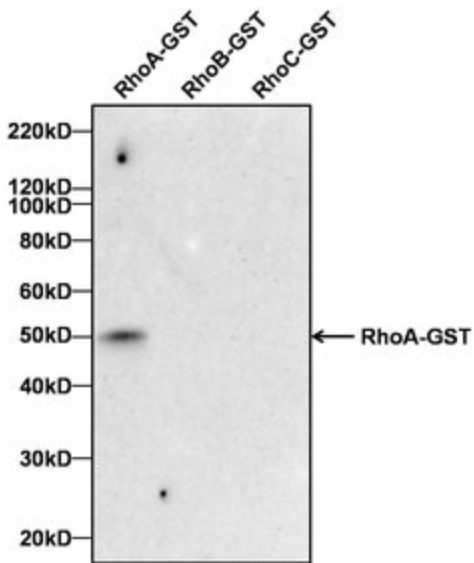
## Product Specific Information

By Western blot, MA1-134 detects recombinant RhoA, but not recombinant RhoB or recombinant RhoC. By Western blot on mouse and rat kidney whole tissue lysates, MA1-134 detects a band of ~22kD corresponding to the expected molecular weight of RhoA. A nonspecific band at ~55kD was also detected in both kidney lysates.

## Advanced Verification Data

### RhoA Antibody (MA1-134)

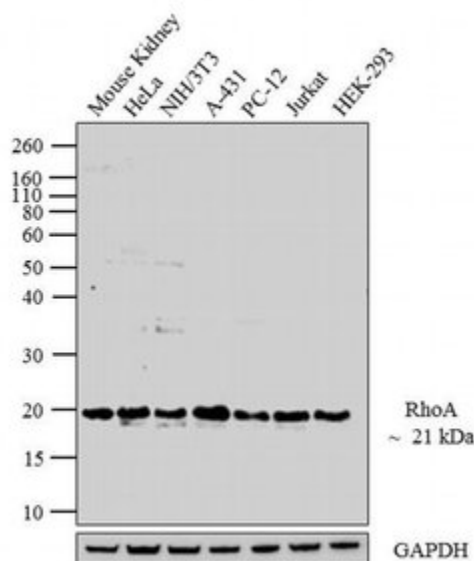
Antibody specificity for modified targets can be established by testing the detection of the target protein along with closely related proteins (belonging to the same family). Relevant related proteins (RhoB and RhoC) when tested along with RhoA recombinant protein using RhoA Mouse Monoclonal Antibody (Product # MA1-134) showed that the antibody specifically detected RhoA. Peptide array validation info.



## Product Images For RhoA Monoclonal Antibody (1B8-1C7)

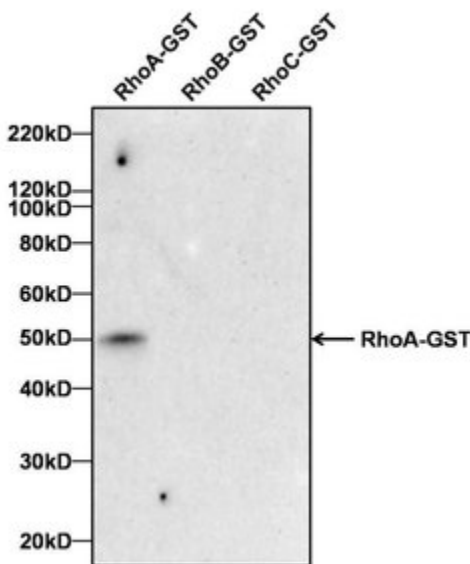
### RhoA Antibody (MA1-134) in WB

Western blot analysis was performed on whole cell extracts (30 µg lysate) of Mouse Kidney (Lane1), HeLa (Lane2), NIH/3T3 (Lane3), A-431 (lane 4), PC-12 (lane 5), Jurkat (lane 6), and HEK-293 (lane 7). The blots were probed with Anti-RhoA Mouse Monoclonal Antibody (Product # MA1-134, 1:500-1:2000 µg/mL) and detected by chemiluminescence using Goat anti-Mouse IgG (H+L) Secondary Antibody, HRP conjugate (Product # 62-6520, 1:4000 dilution). A 21 kDa band corresponding to RhoA was observed across cell lines tested. Known quantity of protein samples were electrophoresed using Novex® NuPAGE® 10 % Bis-Tris gel (Product # NP0301BOX), XCell SureLock™ Electrophoresis System (Product # EI0002), and Novex® Sharp Pre-Stained Protein Standard (Product # LC5800). Resolved proteins were then transferred onto a nitrocellulose membrane with iBlot® 2 Dry Blotting System (Product # IB21001). The membrane was probed with the relevant primary and secondary Antibody using iBind™ Flex Western Starter Kit (Product # SLF2000S). Chemiluminescent detection was performed using Pierce™ ECL Western Blotting Substrate (Product # 32106).



### RhoA Antibody (MA1-134) in WB

Western blot analysis of human recombinant RhoA-GST (Lane 1), RhoB-GST (Lane 2) and RhoC-GST (Lane 3) was performed by loading 100 ng of recombinant human protein per well onto a 4-12% Bis-Tris polyacrylamide gel. Proteins were transferred to a nitrocellulose membrane and blocked with 5% BSA for at least 1 hour. The membrane was probed with a RhoA monoclonal antibody (Product # MA1-134) at a concentration of 2 µg/mL for 1 hour at room temperature on a rocking platform, washed in TBS-0.1%Tween-20, and probed with a goat anti-mouse IgG-HRP secondary antibody (Product # 31430) at a dilution of 1:150,000 for 30 minutes. Chemiluminescent detection was performed using SuperSignal West Dura (Product # 34076).



View more figures on [thermofisher.com](https://www.thermofisher.com)

### Western Blot (2)

Nature communications

#### Curvotaxis directs cell migration through cell-scale curvature landscapes.

"MA1-134 was used in Western Blotting to identify curvotaxis as a novel cellular guiding mechanism and a physical cue for promoting cell-scale curvature."

Authors: Pieuchot L, Marteau J, Guignandon A, Dos Santos T, Brigaud I, Chauvy PF, Cloatre T, Ponche A, Petithory T, Rougerie P, Vassaux M, Milan JL, Tusamda Wakhloo N, Spangenberg A, Bigerelle M, Anselme K

**Species**  
Human

**Dilution**  
1:500

**Year**  
2018

Annals of biomedical engineering

#### Influence of Inherent Mechanophenotype on Competitive Cellular Adherence.

"MA1-134 was used in Western Blotting to suggest that inherent mechanophenotype plays a role as a competing surface during microenvironment mechanosensing and subsequent cell-cell-substrate organisation."

Authors: Shah MK, Garcia-Pak IH, Darling EM

**Species**  
Human

**Dilution**  
1:500

**Year**  
2017

For Research Use Only. Not for use in diagnostic procedures. Not for resale without express authorization. Products are warranted to operate or perform substantially in conformance with published Product specifications in effect at the time of sale, as set forth in the Production documentation, specifications and/or accompanying package inserts ("Documentation"). No claim of suitability for use in applications regulated by FDA is made. The warranty provided herein is valid only when used by properly trained individuals. Unless otherwise stated in the Documentation, this warranty is limited to one year from date of shipment when the Product is subjected to normal, proper and intended usage. This warranty does not extend to anyone other than the Buyer. Any model or sample furnished to Buyer is merely illustrative of the general type and quality of goods and does not represent that any Product will conform to such model or sample. NO OTHER WARRANTIES, EXPRESS OR IMPLIED, ARE GRANTED INCLUDING WITHOUT LIMITATION, IMPLIED WARRANTIES OF MERCHANTABILITY, FITNESS FOR ANY PARTICULAR PURPOSE, OR NON-INFRINGEMENT. BUYER'S EXCLUSIVE REMEDY FOR NON-CONFORMING PRODUCTS DURING THE WARRANTY PERIOD IS LIMITED TO REPAIR, REPLACEMENT OF OR REFUND FOR THE NON-CONFORMING PRODUCT(S) AT SELLER'S SOLE OPTION. THERE IS NO OBLIGATION TO REPAIR, REPLACE OR REFUND FOR PRODUCTS AS THE RESULT OF (I) ACCIDENT, DISASTER OR EVENT OF FORCE MAJEURE, (II) MISUSE, FAULT OR NEGLIGENCE OF OR BY BUYER, (III) USE OF THE PRODUCTS IN A MANNER FOR WHICH THEY WERE NOT DESIGNED, OR (IV) IMPROPER STORAGE AND HANDLING OF THE PRODUCTS. Unless otherwise expressly stated on the Product or in the documentation accompanying the Product, the Product is intended for research only and is not to be used for any other purpose, including without limitation, unauthorized commercial uses, in vitro diagnostic uses, ex vivo or in vivo therapeutic uses, or any type of consumption by or application to human or animals.