

Laminin beta-2/gamma-1 Monoclonal Antibody (A5)

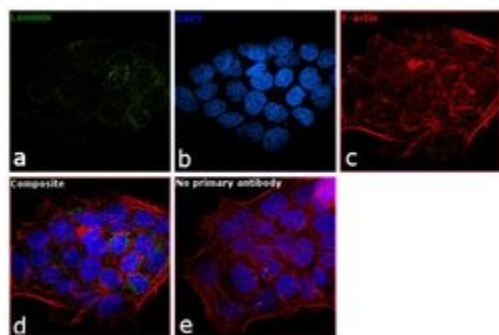
Product Details	
Size	100 µL
Species	Human, Mouse, Pig
Published Species	Rat, Mouse, Rhesus monkey
Expression System	Rat / IgG2a
Class	Monoclonal
Type	Antibody
Clone	A5
Conjugate	Unconjugated
Immunogen	Laminin preparation from the EHS mouse tumor.
Form	Liquid
Concentration	1 mg/mL
Purification	purified
Storage buffer	PBS
Contains	0.09% sodium azide
Storage Conditions	Store at 4°C short term. For long term storage, store at -20°C, avoiding freeze/thaw cycles.
RRID	AB_559896

Applications	Tested Dilution	Publications
Immunocytochemistry (ICC)	5 µg/mL	-
Immunofluorescence (IF)	5 µg/mL	-
Immunohistochemistry (Frozen) (IHC (F))	1:25-1:200	-
ELISA (ELISA)	-	1 Publication
Immunohistochemistry (IHC)	-	13 Publications
Western Blot (WB)	-	1 Publication

Product Specific Information

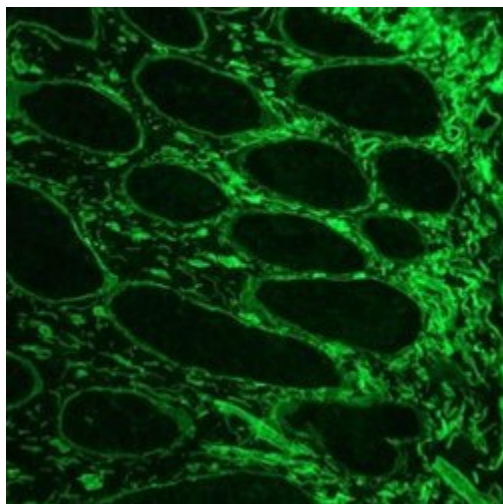
MA1-06100 detects laminin in human and mouse samples. MA1-06100 has successfully been used in immunocytochemistry and immunohistochemistry procedures. The MA1-06100 immunogen is a laminin preparation from the EHS mouse tumor.

Product Images For Laminin beta-2/gamma-1 Monoclonal Antibody (A5)



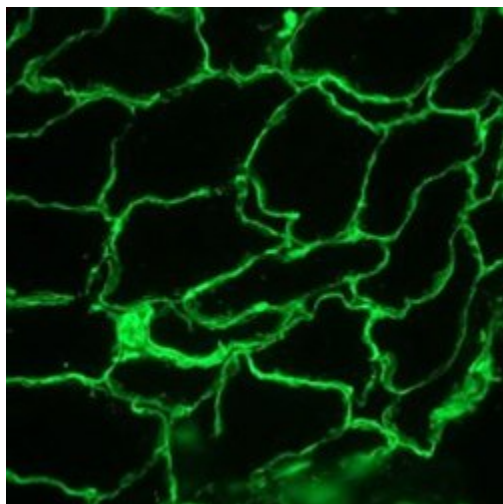
Laminin beta-2/gamma-1 Antibody (MA1-06100) in IF

Immunofluorescence analysis of laminin was performed using 70% confluent log phase A431 cells. The cells were fixed with 4% paraformaldehyde for 10 minutes, permeabilized with 0.1% Triton™ X-100 for 10 minutes, and blocked with 1% BSA for 1 hour at room temperature. The cells were labeled with Laminin Monoclonal Antibody (Product # MA1-06100) at 5 µg/mL in 0.1% BSA and incubated overnight at 4 degree and then labeled with Goat anti-Rat IgG (H+L) Superclonal™ Secondary Antibody, Alexa Fluor® 488 conjugate (Product # A27034) at a dilution of 1:2000 for 45 minutes at room temperature (Panel a: green). Nuclei (Panel b: blue) were stained with SlowFade® Gold Antifade Mountant with DAPI (Product # S36938). F-actin (Panel c: red) was stained with Rhodamine Phalloidin (Product # R415, 1:300). Panel d represents the merged image showing cytoplasmic localization. Panel e represents control cells with no primary antibody to assess background. The images were captured at 60X magnification.



Laminin beta-2/gamma-1 Antibody (MA1-06100) in IHC (F)

Immunohistochemistry analysis of Laminin beta 2 gamma 1 in frozen sections from human colon (methanol fixed) using a Laminin beta-2/gamma-1 Monoclonal Antibody (A5) (Product # MA1-06100), showing the localization of laminin in the connective tissue and in basement membranes surrounding the epithelial crypts and villi.



Laminin beta-2/gamma-1 Antibody (MA1-06100) in IHC (F)

Immunohistochemistry analysis of Laminin beta 2 gamma 1 in frozen sections from pig striated skeletal muscle (methanol fixed) using a Laminin beta-2/gamma-1 Monoclonal Antibody (A5) (Product # MA1-06100), showing the localization of laminin in the connective tissue and in basement membranes surrounding the myofibrils.

[View more figures on thermofisher.com](https://www.thermofisher.com)

15 References

Immunohistochemistry (13)

JCI insight

Disease-modifying bioactivity of intravenous cardiosphere-derived cells and exosomes in mdx mice.

"MA1-06100 was used in Immunohistochemistry to demonstrate regenerative responses of cardiac and skeletal muscle tissue to intravenous cardiosphere-derived cells and exosomes in mdx mice."

Authors: Rogers RG,Fournier M,Sanchez L,Ibrahim AG,Aminzadeh MA,Lewis MI,Marbán E

Species
Mouse

Dilution
1:100

Year
2019

FASEB journal : official publication of the Federation of American Societies for Experimental Biology

Deletion of muscle GRP94 impairs both muscle and body growth by inhibiting local IGF production.

"MA1-06100 was used in immunohistochemistry to study the role of local IGF production in skeletal muscle and body growth using GRP94 knockout mice"

Authors: Barton ER,Park S,James JK,Makarewich CA,Philippou A,Eletto D,Lei H,Brisson B,Ostrovsky O,Li Z,Argon Y

Species
Mouse

Dilution
Not Cited

Year
2012

[View more IHC references on thermofisher.com](#)

Western Blot (1)

Scientific reports

The role of pericytic laminin in blood brain barrier integrity maintenance.

"MA106100 was used in western blot to examine the function of pericyte-derived laminin in vascular integrity"

Authors: Gautam J,Zhang X,Yao Y

Species
Mouse

Dilution
1:500

Year
2016

ELISA (1)

Kidney international

Anti-DNA autoantibodies initiate experimental lupus nephritis by binding directly to the glomerular basement membrane in mice.

"MA1-06100 was used in ELISA to test if direct binding of anti-DNA antibody to the glomerular basement membrane important in experimental lupus nephritis"

Authors: Krishnan MR,Wang C,Marion TN

Species
Not Applicable

Dilution
Not Cited

Year
2012

More applications with references on thermofisher.com

For Research Use Only. Not for use in diagnostic procedures. Not for resale without express authorization. Products are warranted to operate or perform substantially in conformance with published Product specifications in effect at the time of sale, as set forth in the Production documentation, specifications and/or accompanying package inserts ("Documentation"). No claim of suitability for use in applications regulated by FDA is made. The warranty provided herein is valid only when used by properly trained individuals. Unless otherwise stated in the Documentation, this warranty is limited to one year from date of shipment when the Product is subjected to normal, proper and intended usage. This warranty does not extend to anyone other than the Buyer. Any model or sample furnished to Buyer is merely illustrative of the general type and quality of goods and does not represent that any Product will conform to such model or sample. NO OTHER WARRANTIES, EXPRESS OR IMPLIED, ARE GRANTED INCLUDING WITHOUT LIMITATION, IMPLIED WARRANTIES OF MERCHANTABILITY, FITNESS FOR ANY PARTICULAR PURPOSE, OR NON INFRINGEMENT. BUYER'S EXCLUSIVE REMEDY FOR NON-CONFORMING PRODUCTS DURING THE WARRANTY PERIOD IS LIMITED TO REPAIR, REPLACEMENT OF OR REFUND FOR THE NON-CONFORMING PRODUCT(S) AT SELLER'S SOLE OPTION. THERE IS NO OBLIGATION TO REPAIR, REPLACE OR REFUND FOR PRODUCTS AS THE RESULT OF (I) ACCIDENT, DISASTER OR EVENT OF FORCE MAJEURE, (II) MISUSE, FAULT OR NEGLIGENCE OF OR BY BUYER, (III) USE OF THE PRODUCTS IN A MANNER FOR WHICH THEY WERE NOT DESIGNED, OR (IV) IMPROPER STORAGE AND HANDLING OF THE PRODUCTS. Unless otherwise expressly stated on the Product or in the documentation accompanying the Product, the Product is intended for research only and is not to be used for any other purpose, including without limitation, unauthorized commercial uses, in vitro diagnostic uses, ex vivo or in vivo therapeutic uses, or any type of consumption by or application to human or animals.