

# Phospho-SMAD2 (Ser465, Ser467) Monoclonal Antibody (H.205.4)

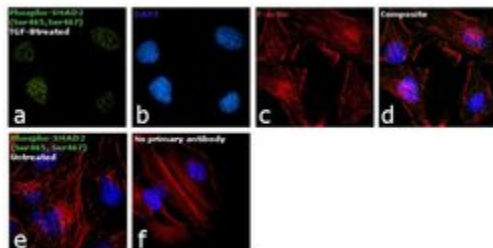
Product Details	
Size	100 µL
Species	Human, Mink, Mouse, Rat
Published Species	Mouse
Expression System	Rabbit / IgG
Class	Monoclonal
Type	Antibody
Clone	H.205.4
Conjugate	Unconjugated
Immunogen	Synthetic phosphopeptide corresponding to residues surrounding pSer465/467 of human Smad2
Form	Liquid
Purification	Affinity chromatography
Storage buffer	0.01M HEPES, pH 7.5, with 0.15M NaCl, 100µg/mL BSA, 50% glycerol
Contains	<0.02% sodium azide
Storage Conditions	-20°C
RRID	AB_10978317

Applications	Tested Dilution	Publications
Immunocytochemistry (ICC)	1:100	-
Immunofluorescence (IF)	1:100	-
Western Blot (WB)	1:1000	1 Publication
Immunohistochemistry (IHC)	-	1 Publication

## Product Specific Information

It is not recommended to aliquot this antibody. This antibody is not cross-reactive with other Smad-related proteins.

## Advanced Verification Data



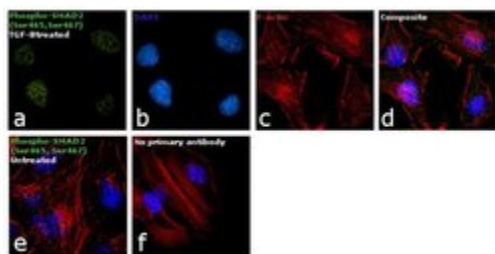
### Phospho-SMAD2 (Ser465, Ser467) Antibody (MA5-15122)

Altered expression of target protein upon cell treatment demonstrates antibody specificity. Immunocytochemistry analysis of Phospho-SMAD2 using Phospho-SMAD2 (Ser465, Ser467) Monoclonal Antibody (Product # MA5-15122) shows increased expression of proteins in HeLa cell line upon TGF-2 treatment. Cell treatment validation info.

## Product Images For Phospho-SMAD2 (Ser465, Ser467) Monoclonal Antibody (H.205.4)

### Phospho-SMAD2 (Ser465, Ser467) Antibody (MA5-15122) in IF

Immunofluorescence analysis of Phospho-SMAD2 was performed using 70 % confluent log phase HeLa cells treated with TGF-2 (10 ng/mL) for 30 minutes. The cells were fixed with 4% paraformaldehyde for 10 minutes, permeabilized with 0.1% Triton™ X-100 for 10 minutes, and blocked with 1% BSA for 1 hour at room temperature. The cells were labeled with Phospho-SMAD2 (Ser465, Ser467) Monoclonal Antibody (H.205.4) (MA5-15122) at 1:100 dilution in 0.1% BSA and incubated overnight at room temperature and then labeled with Goat anti-Rabbit IgG (H+L) Superclonal™ Secondary Antibody, Alexa Fluor® 488 conjugate (A27034) at a dilution of 1:2000 for 45 minutes at room temperature (Panel a: green). Nuclei (Panel b: blue) were stained with SlowFade® Gold Antifade Mountant with DAPI (S36938). F-actin (Panel c: red) was stained with Rhodamine Phalloidin (Product # R415, 1:300). Panel d represents the merged image showing increased nuclear staining. Panel e shows untreated cells with reduced signal. Panel f shows the no primary antibody control. The images were captured at 60X magnification.



[View more figures on thermofisher.com](#)

### 2 References

#### Immunohistochemistry (1)

Nature communications

#### GDF11 decreases bone mass by stimulating osteoclastogenesis and inhibiting osteoblast differentiation.

"MA5-15122 was used in western blot to study the role of GDF11 in bone remodeling"

Authors: Liu W,Zhou L,Zhou C,Zhang S,Jing J,Xie L,Sun N,Duan X,Jing W,Liang X,Zhao H,Ye L,Chen Q,Yuan Q

Species

Mouse  
Not Applicable

Dilution

1:1000  
Not Cited

Year

2016

#### Western Blot (1)

Nature communications

#### GDF11 decreases bone mass by stimulating osteoclastogenesis and inhibiting osteoblast differentiation.

"MA5-15122 was used in western blot to study the role of GDF11 in bone remodeling"

Authors: Liu W,Zhou L,Zhou C,Zhang S,Jing J,Xie L,Sun N,Duan X,Jing W,Liang X,Zhao H,Ye L,Chen Q,Yuan Q

Species

Mouse  
Not Applicable

Dilution

1:1000  
Not Cited

Year

2016

For Research Use Only. Not for use in diagnostic procedures. Not for resale without express authorization. Products are warranted to operate or perform substantially in conformance with published Product specifications in effect at the time of sale, as set forth in the Production documentation, specifications and/or accompanying package inserts ("Documentation"). No claim of suitability for use in applications regulated by FDA is made. The warranty provided herein is valid only when used by properly trained individuals. Unless otherwise stated in the Documentation, this warranty is limited to one year from date of shipment when the Product is subjected to normal, proper and intended usage. This warranty does not extend to anyone other than the Buyer. Any model or sample furnished to Buyer is merely illustrative of the general type and quality of goods and does not represent that any Product will conform to such model or sample. NO OTHER WARRANTIES, EXPRESS OR IMPLIED, ARE GRANTED INCLUDING WITHOUT LIMITATION, IMPLIED WARRANTIES OF MERCHANTABILITY, FITNESS FOR ANY PARTICULAR PURPOSE, OR NON INFRINGEMENT. BUYER'S EXCLUSIVE REMEDY FOR NON-CONFORMING PRODUCTS DURING THE WARRANTY PERIOD IS LIMITED TO REPAIR, REPLACEMENT OF OR REFUND FOR THE NON-CONFORMING PRODUCT(S) AT SELLER'S SOLE OPTION. THERE IS NO OBLIGATION TO REPAIR, REPLACE OR REFUND FOR PRODUCTS AS THE RESULT OF (I) ACCIDENT, DISASTER OR EVENT OF FORCE MAJEURE, (II) MISUSE, FAULT OR NEGLIGENCE OF OR BY BUYER, (III) USE OF THE PRODUCTS IN A MANNER FOR WHICH THEY WERE NOT DESIGNED, OR (IV) IMPROPER STORAGE AND HANDLING OF THE PRODUCTS. Unless otherwise expressly stated on the Product or in the documentation accompanying the Product, the Product is intended for research only and is not to be used for any other purpose, including without limitation, unauthorized commercial uses, in vitro diagnostic uses, ex vivo or in vivo therapeutic uses, or any type of consumption by or application to human or animals.