

Cyclin D1 Recombinant Rabbit Monoclonal Antibody (SP4)

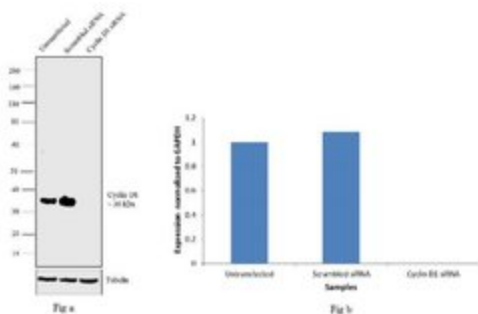
Product Details

Size	1 mL
Species	Human, Mouse, Rat
Published Species	Artificial Control, Baboon, Rat, Mouse, Human
Expression System	Rabbit / IgG
Class	Recombinant Monoclonal
Type	Antibody
Clone	SP4
Conjugate	Unconjugated
Immunogen	Synthetic peptide from C-terminus of human cyclin D1.
Form	Liquid
Concentration	0.046 mg/mL
Purification	Antigen affinity chromatography
Storage buffer	PBS, pH 7.6, with 1% BSA
Contains	0.1% sodium azide
Storage Conditions	-20° C, Avoid Freeze/Thaw Cycles
RRID	AB_11000217

Applications	Tested Dilution	Publications
Flow Cytometry (Flow)	1:30	-
Immunocytochemistry (ICC)	1:250	7 Publications
Immunofluorescence (IF)	1:250	2 Publications
Immunohistochemistry (Paraffin) (IHC (P))	1:100	19 Publications
Western Blot (WB)	1:25-1:200	28 Publications
Immunohistochemistry (Frozen) (IHC (F))	-	2 Publications
Immunohistochemistry (IHC)	-	223 Publications
Miscellaneous PubMed (Misc)	-	3 Publications

Product Specific Information

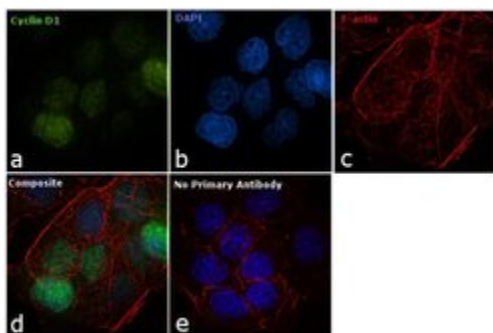
This antibody is predicted to react with mouse and rat based on sequence homology. Heat-mediated antigen retrieval is recommended prior to staining, using a 10mM citrate buffer, pH 6.0, for 10 minutes followed by cooling at room temperature for 20 min. Following antigen retrieval, incubate samples with primary antibody for 30 min at room temperature. A suggested positive control is breast carcinoma or mantle cell lymphoma.



Cyclin D1 Antibody (MA1-39546)

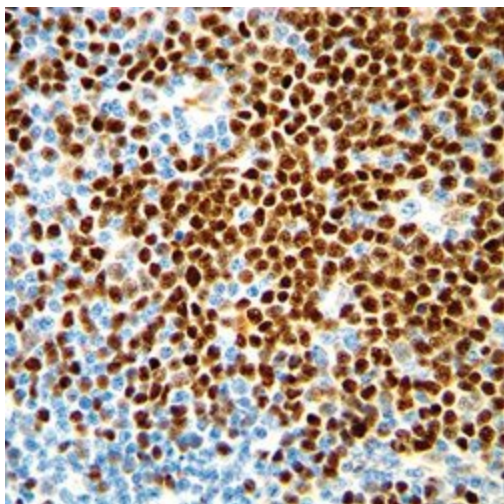
Antibody specificity was demonstrated by siRNA mediated knockdown of target protein. HeLa cells were transfected with Cyclin D1 siRNA and decrease in signal was observed in Western Blot using Anti-Cyclin D1 Monoclonal Antibody (Product # MA5-16356). Knockdown validation info.

Product Images For Cyclin D1 Recombinant Rabbit Monoclonal Antibody (SP4)



Cyclin D1 Antibody (MA1-39546) in IF

Immunofluorescence analysis of Cyclin D1 was performed using 70% confluent log phase HeLa cells. The cells were fixed with 4% paraformaldehyde for 10 minutes, permeabilized with 0.1% Triton™ X-100 for 10 minutes, and blocked with 1% BSA for 1 hour at room temperature. The cells were labeled with Cyclin D1 Rabbit Monoclonal Antibody (Product # MA1-39546) at 1:250 dilution in 0.1% BSA and incubated overnight at 4 degree and then labeled with Goat anti-Rabbit IgG (H+L) Superclonal™ Secondary Antibody, Alexa Fluor® 488 conjugate (Product # A27034) at a dilution of 1:2000 for 45 minutes at room temperature (Panel a: green). Nuclei (Panel b: blue) were stained with SlowFade® Gold Antifade Mountant with DAPI (Product # S36938). F-actin (Panel c: red) was stained with Rhodamine Phalloidin (Product # R415, 1:300). Panel d represents the merged image showing nuclear localization. Panel e represents control cells with no primary antibody to assess background. The images were captured at 60X magnification.



Cyclin D1 Antibody (MA1-39546) in IHC

Immunohistochemical analysis of Cyclin D1 using anti-Cyclin D1 Monoclonal Antibody (Product # MA5-16356) in Mantle Cell Lymphoma Cancer Tissue. The recommended dilution for this antibody in immunohistochemistry applications is 1:100.

View more figures on thermofisher.com

Immunohistochemistry (223)

Molecular neurodegeneration

Essential roles of mitochondrial biogenesis regulator Nrf1 in retinal development and homeostasis.

Authors: Kiyama T, Chen CK, Wang SW, Pan P, Ju Z, Wang J, Takada S, Klein WH, Mao CA

Species
Mouse

Dilution
1:300

Year
2018

Histopathology

Clear cell sarcomas of the kidney are characterised by BCOR gene abnormalities, including exon 15 internal tandem duplications and BCOR-CCNB3 gene fusion.

Authors: Wong MK, Ng CCY, Kuick CH, Aw SJ, Rajasegaran V, Lim JQ, Sudhanshi J, Loh E, Yin M, Ma J, Zhang Z, Iyer P, Loh AHP, Lian DWQ, Wang S, Goh SGH, Lim TH, Lim AST, Ng T, Goytain A, Loh AHL, Tan PH, Teh BT, Chang KTE

Species
Human

Dilution
1:50

Year
2018

[View more IHC references on thermofisher.com](#)

Immunohistochemistry (Paraffin) (19)

Molecular cancer research : MCR

High-Risk HPV, Biomarkers, and Outcome in Matched Cohorts of Head and Neck Cancer Patients Positive and Negative for HIV.

"MA516356 was used in immunohistochemistry - paraffin section to analyze high-risk HPV incidence, prognostic biomarkers, and outcome in HIV-positive and -negative patients with head and neck squamous cell cancer"

Authors: Walline HM, Carey TE, Goudsmit CM, Bellile EL, D'Souza G, Peterson LA, McHugh JB, Pai SI, Lee JJ, Shin DM, Ferris RL

Species
Human

Dilution
Not Cited

Year
2017

Oncotarget

Ablating all three retinoblastoma family members in mouse lung leads to neuroendocrine tumor formation.

"MA516356 was used in immunohistochemistry - paraffin section to examine the role of p107 and p130 proteins in lung tumorigenesis"

Authors: Lázaro S, Pérez-Crespo M, Enguita AB, Hernández P, Martínez-Palacio J, Oteo M, Sage J, Paramio JM, Santos M

Species
Mouse

Dilution
Not Cited

Year
2017

[View more IHC \(P\) references on thermofisher.com](#)

More applications with references on thermofisher.com

ICC (7) WB (28) IF (2) Misc (3) IHC (F) (2)

For Research Use Only. Not for use in diagnostic procedures. Not for resale without express authorization. Products are warranted to operate or perform substantially in conformance with published Product specifications in effect at the time of sale, as set forth in the Production documentation, specifications and/or accompanying package inserts ("Documentation"). No claim of suitability for use in applications regulated by FDA is made. The warranty provided herein is valid only when used by properly trained individuals. Unless otherwise stated in the Documentation, this warranty is limited to one year from date of shipment when the Product is subjected to normal, proper and intended usage. This warranty does not extend to anyone other than the Buyer. Any model or sample furnished to Buyer is merely illustrative of the general type and quality of goods and does not represent that any Product will conform to such model or sample. NO OTHER WARRANTIES, EXPRESS OR IMPLIED, ARE GRANTED INCLUDING WITHOUT LIMITATION, IMPLIED WARRANTIES OF MERCHANTABILITY, FITNESS FOR ANY PARTICULAR PURPOSE, OR NON INFRINGEMENT. BUYER'S EXCLUSIVE REMEDY FOR NON-CONFORMING PRODUCTS DURING THE WARRANTY PERIOD IS LIMITED TO REPAIR, REPLACEMENT OF OR REFUND FOR THE NON-CONFORMING PRODUCT(S) AT SELLER'S SOLE OPTION. THERE IS NO OBLIGATION TO REPAIR, REPLACE OR REFUND FOR PRODUCTS AS THE RESULT OF (I) ACCIDENT, DISASTER OR EVENT OF FORCE MAJEURE, (II) MISUSE, FAULT OR NEGLIGENCE OF OR BY BUYER, (III) USE OF THE PRODUCTS IN A MANNER FOR WHICH THEY WERE NOT DESIGNED, OR (IV) IMPROPER STORAGE AND HANDLING OF THE PRODUCTS. Unless otherwise expressly stated on the Product or in the documentation accompanying the Product, the Product is intended for research only and is not to be used for any other purpose, including without limitation, unauthorized commercial uses, in vitro diagnostic uses, ex vivo or in vivo therapeutic uses, or any type of consumption by or application to human or animals.