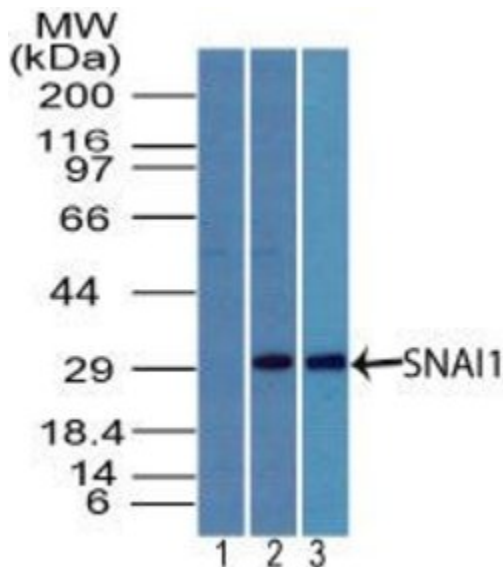


# SNAIL Polyclonal Antibody

Product Details	
Size	100 µg
Species	Human, Mouse
Published Species	Human
Expression System	Rabbit / IgG
Class	Polyclonal
Type	Antibody
Conjugate	Unconjugated
Immunogen	Synthetic peptide (87 ELTSLSEDEDSGKGSQPPS 104) of SNAI1/Snail protein.
Form	Liquid
Concentration	1 mg/mL
Purification	Protein A
Storage buffer	PBS
Contains	0.05% sodium azide
Storage Conditions	Store at 4°C short term. For long term storage, store at -20°C, avoiding freeze/thaw cycles.
RRID	AB_2540972

Applications	Tested Dilution	Publications
Immunocytochemistry (ICC)	1:100	-
Immunofluorescence (IF)	1:100	-
Western Blot (WB)	3-5 µg/mL	1 Publication
Miscellaneous PubMed (Misc)	-	1 Publication

## Product Images For SNAIL Polyclonal Antibody



### SNAIL Antibody (PA5-23472) in WB

Western blot analysis of SNAI1 in human MCF7 cell lysate using 1) prebleed at 1:5000 dilution and 2) a SNAI1/Snail polyclonal antibody (Product # PA5-23472) at 5 µg/mL, and 3) in mouse D3 cell lysate using a SNAI1/Snail polyclonal antibody (Product # PA5-23472) at 3 µg/mL.

## 2 References

### Western Blot (1)

International journal of molecular sciences

#### The Vitamin D Analog, MART-10, Attenuates Triple Negative Breast Cancer Cells Metastatic Potential.

"PA5-23472 was used in western blot to characterize attenuation of triple negative breast cancer cells metastatic potential by the vitamin D analog, MART-10"

Authors: Chiang KC, Yeh TS, Chen SC, Pang JH, Yeh CN, Hsu JT, Chen LW, Kuo SF, Takano M, Kittaka A, Chen TC, Sun CC, Juang HH

**Species**  
Human  
Not Applicable

**Dilution**  
Not Cited  
1:100

**Year**  
2016

### Miscellaneous PubMed (1)

Cancer letters

#### MART-10, the vitamin D analog, is a potent drug to inhibit anaplastic thyroid cancer cell metastatic potential.

"PA5-23472 was used in western blot to examine the effects of vitamin D on anaplastic thyroid cancer"

Authors: Chiang KC, Kuo SF, Chen CH, Ng S, Lin SF, Yeh CN, Chen LW, Takano M, Chen TC, Juang HH, Kittaka A, Lin JD, Pang JH

**Species**  
Human

**Dilution**  
1:100

**Year**  
2015

For Research Use Only. Not for use in diagnostic procedures. Not for resale without express authorization. Products are warranted to operate or perform substantially in conformance with published Product specifications in effect at the time of sale, as set forth in the Production documentation, specifications and/or accompanying package inserts ("Documentation"). No claim of suitability for use in applications regulated by FDA is made. The warranty provided herein is valid only when used by properly trained individuals. Unless otherwise stated in the Documentation, this warranty is limited to one year from date of shipment when the Product is subjected to normal, proper and intended usage. This warranty does not extend to anyone other than the Buyer. Any model or sample furnished to Buyer is merely illustrative of the general type and quality of goods and does not represent that any Product will conform to such model or sample. NO OTHER WARRANTIES, EXPRESS OR IMPLIED, ARE GRANTED INCLUDING WITHOUT LIMITATION, IMPLIED WARRANTIES OF MERCHANTABILITY, FITNESS FOR ANY PARTICULAR PURPOSE, OR NON INFRINGEMENT. BUYER'S EXCLUSIVE REMEDY FOR NON-CONFORMING PRODUCTS DURING THE WARRANTY PERIOD IS LIMITED TO REPAIR, REPLACEMENT OF OR REFUND FOR THE NON-CONFORMING PRODUCT(S) AT SELLER'S SOLE OPTION. THERE IS NO OBLIGATION TO REPAIR, REPLACE OR REFUND FOR PRODUCTS AS THE RESULT OF (I) ACCIDENT, DISASTER OR EVENT OF FORCE MAJEURE, (II) MISUSE, FAULT OR NEGLIGENCE OF OR BY BUYER, (III) USE OF THE PRODUCTS IN A MANNER FOR WHICH THEY WERE NOT DESIGNED, OR (IV) IMPROPER STORAGE AND HANDLING OF THE PRODUCTS. Unless otherwise expressly stated on the Product or in the documentation accompanying the Product, the Product is intended for research only and is not to be used for any other purpose, including without limitation, unauthorized commercial uses, in vitro diagnostic uses, ex vivo or in vivo therapeutic uses, or any type of consumption by or application to human or animals.