

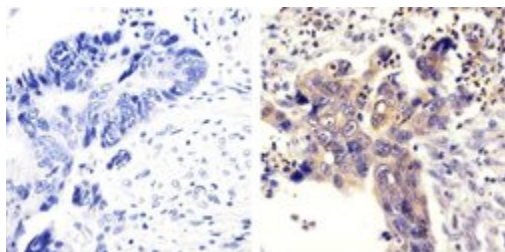
SRC Polyclonal Antibody

Product Details	
Size	200 µL
Species	Mouse, Human
Published Species	Human, Mouse
Expression System	Rabbit / IgG
Class	Polyclonal
Type	Antibody
Conjugate	Unconjugated
Immunogen	The antibody was produced using a synthetic peptide derived from the amino acid region 6-19 of human Src. The sequence is conserved in mouse and rat.
Form	Liquid
Purification	Antigen affinity chromatography
Storage buffer	Dulbecco's PBS, pH 7.3, with 50% glycerol, 1mg/mL BSA
Contains	0.05% sodium azide
Storage Conditions	-20°C
RRID	AB_2533711

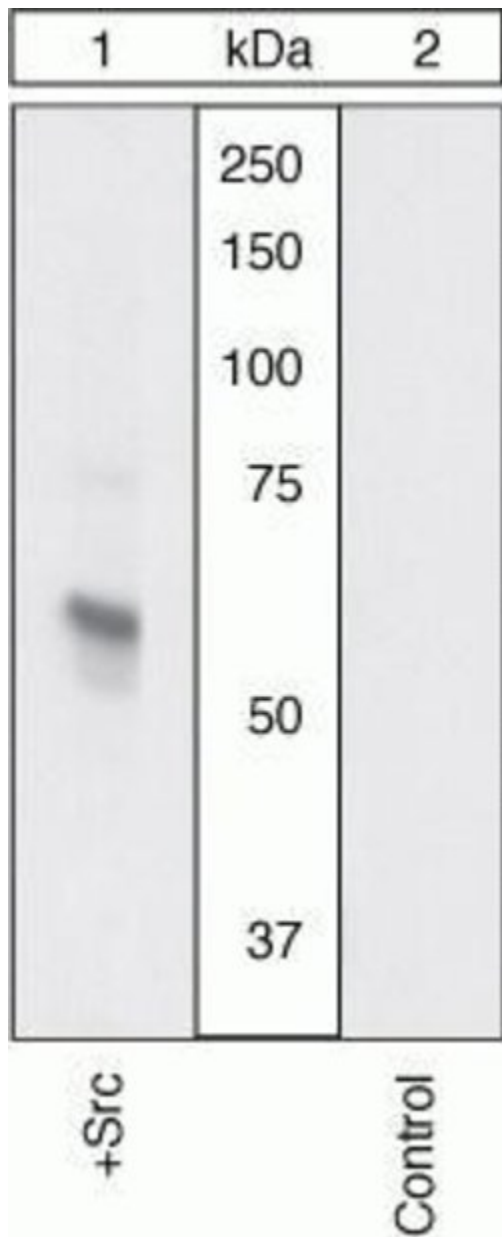
Applications	Tested Dilution	Publications
Immunohistochemistry (Paraffin) (IHC (P))	1:50-1:500	-
Western Blot (WB)	1:1000	4 Publications
Immunoprecipitation (IP)	-	1 Publication

Product Images For SRC Polyclonal Antibody

SRC Antibody (44-655G) in IHC (P)



Immunohistochemistry analysis of SRC showing staining in the cytoplasm of paraffin-embedded human colon carcinoma (right) compared to a negative control without primary antibody (left). To expose target proteins, antigen retrieval was performed using 10mM sodium citrate (pH 6.0), microwaved for 8-15 min. Following antigen retrieval, tissues were blocked in 3% H₂O₂-methanol for 15 min at room temperature, washed with ddH₂O and PBS, and then probed with a SRC polyclonal antibody (Product # 44-655G) diluted in 3% BSA-PBS at a dilution of 1:100 overnight at 4°C in a humidified chamber. Tissues were washed extensively in PBST and detection was performed using an HRP-conjugated secondary antibody followed by colorimetric detection using a DAB kit. Tissues were counterstained with hematoxylin and dehydrated with ethanol and xylene to prep for mounting.



SRC Antibody (44-655G) in WB

Western Blot. Extracts prepared from CEF cells transfected with Src (1) or left untransfected (2) were resolved by SDS-PAGE on a 10% polyacrylamide gel and transferred to PVDF. Membranes were blocked with a 5% BSA-TBST buffer for two hours at room temperature and incubated with a 1:1000 dilution of Src pan antibody for two hours at room temperature in a 1% BSA-TBST buffer. After washing, membranes were incubated with goat F(ab')₂ anti-rabbit IgG HRP conjugate (Product # ALI4404) and bands were detected using the Pierce SuperSignal™ method.

[View more figures on thermofisher.com](https://www.thermofisher.com)

5 References

Western Blot (4)

American journal of cancer research

Tumor endothelial cells promote metastasis and cancer stem cell-like phenotype through elevated Epiregulin in esophageal cancer.

"44-655G was used in western blot to investigate the molecular mechanisms by which human esophageal cancer endothelial cells contribute to esophageal carcinoma progression"

Authors: Sun L, Pan J, Yu L, Liu H, Shu X, Sun L, Lou J, Yang Z, Ran Y

Species
Human

Dilution
1:1000

Year
2020

Development (Cambridge, England)

Dysregulated PDGFR signaling alters coronal suture morphogenesis and leads to craniosynostosis through endochondral ossification.

"44-655G was used in Western Blotting to demonstrate that tight regulation of endogenous PDGFR activity is required for normal calvarium development in the mouse and that dysregulated PDGFR activity causes craniosynostosis."

Authors: He F, Soriano P

Species
Mouse

Dilution
1:1,000

Year
2017

[View more WB references on thermofisher.com](#)

Immunoprecipitation (1)

Current protocols in cell biology

Analyzing FAK and Pyk2 in early integrin signaling events.

Authors: Bernard-Trifilo JA, Lim ST, Hou S, Schlaepfer DD, Ilic D

Species
Mouse

Dilution
Not Cited

Year
2006

More applications with references on thermofisher.com

For Research Use Only. Not for use in diagnostic procedures. Not for resale without express authorization. Products are warranted to operate or perform substantially in conformance with published Product specifications in effect at the time of sale, as set forth in the Production documentation, specifications and/or accompanying package inserts ("Documentation"). No claim of suitability for use in applications regulated by FDA is made. The warranty provided herein is valid only when used by properly trained individuals. Unless otherwise stated in the Documentation, this warranty is limited to one year from date of shipment when the Product is subjected to normal, proper and intended usage. This warranty does not extend to anyone other than the Buyer. Any model or sample furnished to Buyer is merely illustrative of the general type and quality of goods and does not represent that any Product will conform to such model or sample. NO OTHER WARRANTIES, EXPRESS OR IMPLIED, ARE GRANTED INCLUDING WITHOUT LIMITATION, IMPLIED WARRANTIES OF MERCHANTABILITY, FITNESS FOR ANY PARTICULAR PURPOSE, OR NON INFRINGEMENT. BUYER'S EXCLUSIVE REMEDY FOR NON-CONFORMING PRODUCTS DURING THE WARRANTY PERIOD IS LIMITED TO REPAIR, REPLACEMENT OF OR REFUND FOR THE NON-CONFORMING PRODUCT(S) AT SELLER'S SOLE OPTION. THERE IS NO OBLIGATION TO REPAIR, REPLACE OR REFUND FOR PRODUCTS AS THE RESULT OF (I) ACCIDENT, DISASTER OR EVENT OF FORCE MAJEURE, (II) MISUSE, FAULT OR NEGLIGENCE OF OR BY BUYER, (III) USE OF THE PRODUCTS IN A MANNER FOR WHICH THEY WERE NOT DESIGNED, OR (IV) IMPROPER STORAGE AND HANDLING OF THE PRODUCTS. Unless otherwise expressly stated on the Product or in the documentation accompanying the Product, the Product is intended for research only and is not to be used for any other purpose, including without limitation, unauthorized commercial uses, in vitro diagnostic uses, ex vivo or in vivo therapeutic uses, or any type of consumption by or application to human or animals.