

EmbryoMax® MEF Conditioned Media

Stem Cell Media

Cat. # SCM103

Pack size: 100ml

Store at -20°C

FOR RESEARCH USE ONLY
NOT FOR USE IN DIAGNOSTIC PROCEDURES
NOT FOR HUMAN OR ANIMAL CONSUMPTION



Certificate of Analysis

page 1 of 2

Background

Traditionally, human embryonic stem cell (hESC) or induced pluripotent stem cell (iPSC) culture require mouse embryonic fibroblasts (MEF) support. This requirement makes the protocol complicated and variable. MEF conditioned medium (MEFCM) contains all the growth factors needed in hESC/iPSC culture, eliminating the routine preparation of feeder cells. It is a ready-to-use product for the serum/feeder-free culture of human ES/iPSC cells.

Each batch of EmbryoMax® MEF Conditioned Media has been tested for hES/iPSC cells pluripotency. The media requires an additional 10 ng/ml of bFGF to be added once thawed before use.

Storage Conditions

Store at -20C until expiration date on label.

Quality Control Testing

Stem Cell Assay: PASSED

Cell Viability and Morphology: PASSED

Mycoplasma Testing: PASSED

Bacterial Testing: PASSED

Fungi Testing: PASSED

Protocol

1. Coat culture dish with Matrigel the day before plating.
2. Wash Matrigel (BD Biosciences Cat# 354277) coat dishes with DMEM/F12 medium.
3. Resuspend hESC pellets in EmbryoMax® MEF Conditioned Media supplemented with 10 ng/ml bFGF.
4. Split cells at 1:3 to 1:5 ratio every 4 to 5 days using 1mg/ml Dispase (diluted with DMEM/F12).

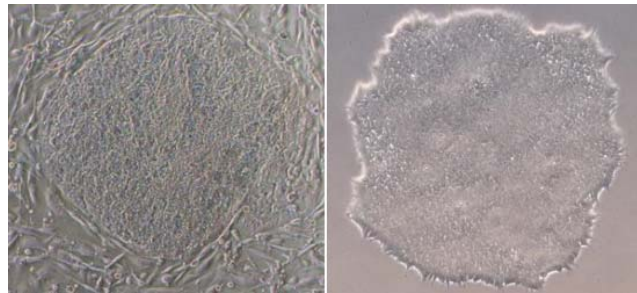


Image 1. Human IPS cells grown on MEFS in serum containing media (left) and in EmbryoMax MEFCM without feeders (Right). Undifferentiated cells in both conditions contain a high ratio of nucleus to cytoplasm, prominent nucleoli, and compact colony structure.

SPECIES LEGEND: H Human Ca Canine M Mouse R Rat Rb Rabbit B Bovine P Porcine WR Most Common Vertebrates

Please visit www.millipore.com for additional product information and references.

Submit your published journal article, and earn credit toward future purchases. Visit www.millipore.com/publicationrewards to learn more!

RELATED PRODUCTS

cat #	description
PMEF-CFL	EmbryoMax PMEF, Strain CF1, Untreated
PMEF-CF	EmbryoMax PMEF, Strain CF-1, Mitomycin C Treated
PMEF-CF-P1	EmbryoMax PMEF, Strain CF1, Untreated, Passage 1
PMEF-CFX	EmbryoMax PMEF, Strain CF-1, Irradiated
PMEF-H	EmbryoMax PMEF, Hygromycin Resistant, Mitomycin C Treated
PMEF-HL	EmbryoMax PMEF, Hygromycin Resistant, Untreated
PMEF-N	EmbryoMax PMEF, Neomycin Resistant, Mitomycin C Treated
PMEF-NL	EmbryoMax PMEF, Neomycin Resistant, Untreated
PMEF-NL-P1	EmbryoMax PMEF, Neomycin Resistant, Untreated, Passage 1
ESG1107	ESGRO® mLIF Medium Supplement, 10 ⁷ units
SLM-220-B	EmbryoMax DMEM (1X), with 4,500mg/L Glucose, 2.25g/L Sodium Bicarb, without L-Glut and Sodium Pyruvate
ES-009-B	EmbryoMax Fetal Bovine Serum
TMS-AB2-C	EmbryoMax Penicillin-Streptomycin Solution, 100X
TMS-002-C	EmbryoMax L-Glutamine Solution (100X), 200mM
TMS-001-C	EmbryoMax MEM, Non Essential Amino Acids (100X)
ES-008-D	EmbryoMax Nucleosides (100X)
ES-007-E	EmbryoMax 2-Mercaptoethanol (100X)
BSS-1005-A	Dulbecco's Phosphate Buffered Saline (1X)

Please visit www.millipore.com for additional product information, test data and references

28820 Single Oak Drive • Temecula, CA 92590

Technical Support: T: 1-800-MILLIPORE (1-800-645-5476) • F: 1-800-437-7502

FOR RESEARCH USE ONLY. Not for use in diagnostic procedures. Not for human or animal consumption. Purchase of this Product does not include any right to resell or transfer, either as a stand-alone product or as a component of another product. Any use of this Product for purposes other than research is strictly prohibited.

Millipore®, the M mark, Upstate®, Chemicon®, Linco® and all other trademarks, unless specifically identified above in the text as

belonging to a third party, are owned by Millipore Corporation. Copyright ©2008-201720172016 Millipore Corporation. All rights reserved.



We Buy 100% Certified
Renewable Energy