

CD326 (EpCAM) Monoclonal Antibody (G8.8), eFluor 450, eBioscience™

Product Details	
Size	100 µg
Species Reactivity	Mouse
Published Species	Mouse, Human
Host/Isotope	Rat / IgG2a, kappa
Recommended Isotype Control	Rat IgG2a kappa Isotype Control (eBR2a), eFluor 450, eBioscience™
Class	Monoclonal
Type	Antibody
Clone	G8.8
Conjugate	eFluor® 450
Form	Liquid
Concentration	0.2 mg/mL
Purification	Affinity chromatography
Storage buffer	PBS, pH 7.2, with 0.1% gelatin
Contains	0.09% sodium azide
Storage Conditions	4° C, store in dark, DO NOT FREEZE!
RRID	AB_10717090

Applications	Tested Dilution	Publications
Flow Cytometry (Flow)	1 µg/test	25 Publications
Affinity Purification (AP)	-	1 Publication
Immunofluorescence (IF)	-	11 Publications
Immunohistochemistry (IHC)	-	3 Publications

Product Specific Information

Description: The G8.8 monoclonal antibody reacts with the 40 kDa protein mouse EpCAM (epithelial cellular adhesion molecule), also known as EGP40 (epithelial glycoprotein 40), 17-1A antigen, TACSTD1 (tumor-associated calcium signal transducer 1), and CD326. The immunogen used to generate the G8.8 antibody was the TE-71 thymic epithelial cell line. CD326 is expressed on the majority of epithelial cells, and is considered a pan-carcinoma antigen. CD326 mediates calcium-independent, homophilic, cell-cell adhesion and may function as a growth factor receptor. The antigen is being used as a target for immunotherapy treatment of human carcinomas. CD326 binds LAIR-1 (CD305) and LAIR-2 (CD306) to inhibit cellular activation and inflammation. This epithelial glycoprotein is now recognized as having an important role in tumor biology.

Applications Reported: This G8.8 antibody has been reported for use in flow cytometric analysis.

Applications Tested: This G8.8 antibody has been tested by flow cytometric analysis of the TE-71 cell line. This can be used at less than or equal to 1 µg per test. A test is defined as the amount (µg) of antibody that will stain a cell sample in a final volume of 100 µL. Cell number should be determined empirically but can range from 10⁵ to 10⁸ cells/test. It is recommended that the

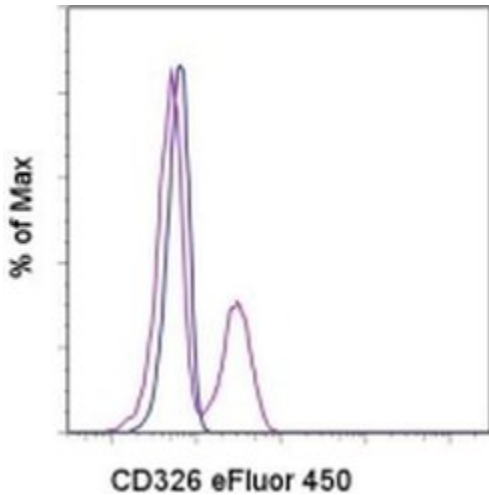
antibody be carefully titrated for optimal performance in the assay of interest.

eFluor® 450 is an alternative to Pacific Blue®. eFluor® 450 emits at 445 nm and is excited with the Violet laser (405 nm). Please make sure that your instrument is capable of detecting this fluorochohome.

Excitation: 405 nm; Emission: 445 nm; Laser: Violet Laser.

Filtration: 0.2 µm post-manufacturing filtered.

Product Images For CD326 (EpCAM) Monoclonal Antibody (G8.8), eFluor 450, eBioscience™



CD326 (EpCAM) Antibody (48-5791-82) in Flow

Staining of the TE-71 cell line with 0.5 µg of Rat IgG2a K Isotype Control eFluor® 450 (Product # 48-4321-82) (blue histogram) or 0.5 µg of Anti-Mouse CD326 (EpCAM) eFluor® 450 (purple histogram). Total viable cells were used for analysis.

[View more figures on thermofisher.com](https://www.thermofisher.com)

Flow Cytometry (25)

Frontiers in immunology

ATF3 Sustains IL-22-Induced STAT3 Phosphorylation to Maintain Mucosal Immunity Through Inhibiting Phosphatases.

"Published figure using CD326 (EpCAM) monoclonal antibody (Product # 48-5791-82) in Flow Cytometry"
 Authors: Glal D, Sudhakar JN, Lu HH, Liu MC, Chiang HY, Liu YC, Cheng CF, Shui JW

Species
Not Applicable

Dilution
Not Cited

Year
2019

eLife

Differential requirement of kindlin-3 for T cell progenitor homing to the non-vascularized and vascularized thymus.

"Published figure using CD326 (EpCAM) monoclonal antibody (Product # 48-5791-82) in Flow Cytometry"
 Authors: Moretti FA, Klapproth S, Ruppert R, Margraf A, Weber J, Pick R, Scheiermann C, Sperandio M, Fässler R, Moser M

Species
Not Applicable

Dilution
Not Cited

Year
2018

[View more Flow references on thermofisher.com](#)

Immunofluorescence (11)

Frontiers in immunology

Early Resistance of Non-virulent Mycobacterial Infection in C57BL/6 Mice Is Associated With Rapid Up-Regulation of Antimicrobial Cathelicidin *Camp*.

"Published figure using CD326 (EpCAM) monoclonal antibody (Product # 48-5791-82) in Immunofluorescence"
 Authors: Adam L, López-González M, Björk A, Pålsson S, Poux C, Wahren-Herlenius M, Fernández C, Spetz AL

Species
Not Applicable

Dilution
Not Cited

Year
2019

International journal of molecular sciences

Molecular Characterization of Gastric Epithelial Cells Using Flow Cytometry.

"Published figure using CD326 (EpCAM) monoclonal antibody (Product # 48-5791-82) in Flow Cytometry"
 Authors: Bockerstett KA, Wong CF, Koehm S, Ford EL, DiPaolo RJ

Species
Not Applicable

Dilution
Not Cited

Year
2018

[View more IF references on thermofisher.com](#)

More applications with references on thermofisher.com

AP (1) IHC (3)

For Research Use Only. Not for use in diagnostic procedures. Not for resale without express authorization. Products are warranted to operate or perform substantially in conformance with published Product specifications in effect at the time of sale, as set forth in the Production documentation, specifications and/or accompanying package inserts ("Documentation"). No claim of suitability for use in applications regulated by FDA is made. The warranty provided herein is valid only when used by properly trained individuals. Unless otherwise stated in the Documentation, this warranty is limited to one year from date of shipment when the Product is subjected to normal, proper and intended usage. This warranty does not extend to anyone other than the Buyer. Any model or sample furnished to Buyer is merely illustrative of the general type and quality of goods and does not represent that any Product will conform to such model or sample. NO OTHER WARRANTIES, EXPRESS OR IMPLIED, ARE GRANTED INCLUDING WITHOUT LIMITATION, IMPLIED WARRANTIES OF MERCHANTABILITY, FITNESS FOR ANY PARTICULAR PURPOSE, OR NON INFRINGEMENT. BUYER'S EXCLUSIVE REMEDY FOR NON-CONFORMING PRODUCTS DURING THE WARRANTY PERIOD IS LIMITED TO REPAIR, REPLACEMENT OF OR REFUND FOR THE NON-CONFORMING PRODUCT(S) AT SELLER'S SOLE OPTION. THERE IS NO OBLIGATION TO REPAIR, REPLACE OR REFUND FOR PRODUCTS AS THE RESULT OF (I) ACCIDENT, DISASTER OR EVENT OF FORCE MAJEURE, (II) MISUSE, FAULT OR NEGLIGENCE OF OR BY BUYER, (III) USE OF THE PRODUCTS IN A MANNER FOR WHICH THEY WERE NOT DESIGNED, OR (IV) IMPROPER STORAGE AND HANDLING OF THE PRODUCTS. Unless otherwise expressly stated on the Product or in the documentation accompanying the Product, the Product is intended for research only and is not to be used for any other purpose, including without limitation, unauthorized commercial uses, in vitro diagnostic uses, ex vivo or in vivo therapeutic uses, or any type of consumption by or application to human or animals.