

Purified anti-mouse Ly-6C Antibody

Catalog# / Size	128001 / 50 µg 128002 / 500 µg
Clone	HK1.4
Other Names	Lymphocyte antigen 6 complex, locus C
Isotype	Rat IgG2c, κ
Description	Most hematopoietic cells express one or more members of Ly-6 family. The expression of Ly-6 varies with development stage and activation. Ly-6C is a 14-17 kD GPI-linked surface protein expressed on mouse monocyte/macrophage cells, endothelial cells, neutrophils, and some T cell subsets. Ly-6C is reported to be an indicator of memory CD8 ⁺ T cells.

Product Details

Reactivity	Mouse
Antibody Type	Monoclonal
Host Species	Rat
Immunogen	L3 cloned CTL cells
Formulation	Phosphate-buffered solution, pH 7.2, containing 0.09% sodium azide.
Preparation	The antibody was purified by affinity chromatography.
Concentration	0.5 mg/ml
Storage & Handling	The antibody solution should be stored undiluted between 2°C and 8°C.
Application	FC - <i>Quality tested</i> IHC-F - <i>Validated</i>
Recommended Usage	Each lot of this antibody is quality control tested by immunofluorescent staining with flow cytometric analysis . For flow cytometric staining, the suggested use of this reagent is ≤ 0.25 µg per 10 ⁶ cells in 100 µl volume or 100 µl of whole blood. It is recommended that the reagent be titrated for optimal performance for each application.
Application Notes	Clone HK1.4 does not block the binding of clone RB6-8C5 ⁵ . Additional reported applications (for relevant formats of this clone) include: <i>in vitro</i> activation of T cells ³⁻⁹ and immunohistochemistry of frozen sections ⁴ .
Application References	<ol style="list-style-type: none"> 1. Jutila MA, et al. 1988. Eur. J. Immunol. 18:1819. (Activ) 2. Herold KC, et al. 1990. Diabetes 39:815. (Activ) 3. Havran WL, et al. 1988. J. Immunol. 140:1034 (Activ) 4. Flanagan K, et al. 2008. J. Immunol. 180:3874. (IHC) 5. Makaroff LE, et al. 2009. P. Natl. Acad. Sci. USA 106:4799. (FC) 6. Zuber J, et al. 2009. Genes Dev. 23:877. (FC) PubMed 7. Ribechini E, et al. 2009. Eur. J. Immunol. 39:3538. 8. Ma C, et al. 2012. J. Leukoc. Biol. 92:1199. 9. Watson NB, et al. 2015. J Immunol. 194:2796. PubMed
Product Citations	<ol style="list-style-type: none"> 1. Watson N, et al. 2015. J Immunol. 194:2796. PubMed 2. Francis M, et al. 2017. Toxicol Sci. 155(1):182-195. PubMed 3. Rogers P, Driessnack M, and Schwartz E. 2017. PLoS One. 10.1371/journal.pone.0181985. PubMed 4. Zander R, et al. 2017. Cell Rep.. 10.1016/j.celrep.2017.10.077. PubMed 5. Wichaiyo S, et al. 2019. Haematologica. 104:1648. PubMed 6. An Y et al. 2018. Cell reports. 25(3):702-714 . PubMed 7. Janela B et al. 2019. Immunity. 50(4):1069-1083 . PubMed 8. Goltsev Y et al. 2018. Cell. 174(4):968-981 . PubMed 9. Snell LM, et al. 2018. Immunity. 49:678. PubMed 10. Winter C, et al. 2018. Cell Metab. 28:175. PubMed 11. Akiel M, et al. 2017. Cancer Res. 77:4014. PubMed 12. Fino KK, et al. 2017. Sci Rep. 5.334722222. PubMed

RRID

AB_1134213 (BioLegend Cat. No. 128001)
AB_1134214 (BioLegend Cat. No. 128002)

Antigen Details

Structure	14-17 kD protein (134 amino acids), member of the Ly-6 family of GPI linked protein. Ly6 family members share structure homology throughout a distinctive cystein rich protein domain that incorporates O-linked carbohydrates.
Distribution	Ly-6C is expressed primarily on bone marrow myeloid populations, monocytes/macrophages, neutrophils, endothelial cells, and some T cell subsets. Ly-6C is also a marker of memory CD8 ⁺ T cells.
Cell Type	Endothelial cells, Macrophages, Monocytes, Neutrophils, T cells
Biology Area	Immunology
Molecular Family	CD Molecules
Antigen References	1. Jutila MA, et al. 1988. Eur. J. Immunol. 18:1819. 2. Cerwenka A, et al. 1998. J. Immunol. 161:97.
Gene ID	17067

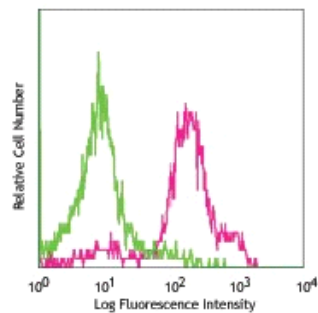
Related Protocols

Cell Surface Flow Cytometry Staining Protocol

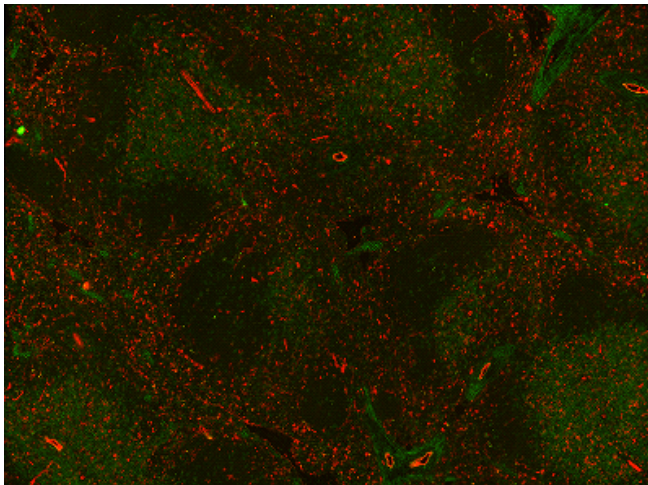
Other Formats

Pacific Blue™ anti-mouse Ly-6C, APC anti-mouse Ly-6C, Biotin anti-mouse Ly-6C, FITC anti-mouse Ly-6C, Alexa Fluor® 647 anti-mouse Ly-6C, PE anti-mouse Ly-6C, PerCP/Cyanine5.5 anti-mouse Ly-6C, PE/Cyanine7 anti-mouse Ly-6C, Alexa Fluor® 488 anti-mouse Ly-6C, Alexa Fluor® 700 anti-mouse Ly-6C, APC/Cyanine7 anti-mouse Ly-6C, PerCP anti-mouse Ly-6C, Brilliant Violet 570™ anti-mouse Ly-6C, Brilliant Violet 421™ anti-mouse Ly-6C, Brilliant Violet 510™ anti-mouse Ly-6C, Brilliant Violet 605™ anti-mouse Ly-6C, Brilliant Violet 711™ anti-mouse Ly-6C, Purified anti-mouse Ly-6C (Maxpar® Ready), Brilliant Violet 785™ anti-mouse Ly-6C, PE/Dazzle™ 594 anti-mouse Ly-6C, APC/Fire™ 750 anti-mouse Ly-6C, TotalSeq™-A0013 anti-mouse Ly-6C, Brilliant Violet 650™ anti-mouse Ly-6C, TotalSeq™-C0013 anti-mouse Ly-6C, TotalSeq™-B0013 anti-mouse Ly-6C

Product Data



C57BL/6 mouse bone marrow cells stained with purified HK1.4, followed by anti-rat IgG PE (gated on myeloid cell population)



Fresh, frozen mouse spleen was stained with purified Ly6C clone HK1.4 conjugated and detected with a Cy5 CODEX™ oligonucleotide duplex (red). Samples were counterstained with TCR FITC (green). Data generated at Akoya Biosciences, Inc. using the CODEX™ technology.

For research use only. Not for diagnostic use. Not for resale. BioLegend will not be held responsible for patent infringement or other violations that may occur with the use of our products.

*These products may be covered by one or more Limited Use Label Licenses (see the BioLegend Catalog or our website, www.biolegend.com/ordering#license). BioLegend products may not be transferred to third parties, resold, modified for resale, or used to manufacture commercial products, reverse engineer functionally similar materials, or to provide a service to third parties without written approval of BioLegend. By use of these products you accept the terms and conditions of all applicable Limited Use Label Licenses. Unless otherwise indicated, these products are for research use only and are not intended for human or animal diagnostic, therapeutic or commercial use.

8999 BioLegend Way, San Diego, CA 92121 www.biolegend.com
Toll-Free Phone: 1-877-Bio-Legend (246-5343) Phone: (858) 768-5800 Fax: (877) 455-9587