

## Technical Data Sheet

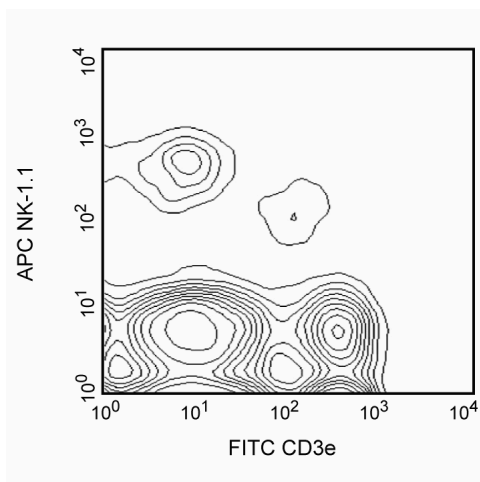
## APC Mouse Anti-Mouse NK-1.1

## Product Information

Material Number:	550627
Alternate Name:	NKR-P1B and NKR-P1C
Size:	0.1 mg
Concentration:	0.2 mg/ml
Clone:	PK136
Immunogen:	Mouse NK-1+ Spleen and Bone Marrow Cells
Isotype:	Mouse (C3H x BALB/c) IgG2a, $\kappa$
Reactivity:	QC Testing: Mouse
Storage Buffer:	Aqueous buffered solution containing $\leq 0.09\%$ sodium azide.

## Description

In the mouse, at least three members of the *Klrk* (Killer cell lectin-like receptor, subfamily *b*; formerly *NKR-P1*) gene family have been identified (*Klrk1a/NKR-P1A*, *Klrk1b/NKR-P1B*, and *Klrk1c/NKR-P1C*); but in the human gene family, a single homologue has been designated *KLRB1*, *NKR-P1A*, or *CD161*. The KLRB1/NKR-P1 family of proteins are type-II-transmembrane C-type lectin receptors. KLRB1C/NKR-P1C activates NK-cell cytotoxicity, while KLRB1B/NKR-P1B functions as an inhibitory receptor. KLRB1B/NKR-P1B protein has intracellular Immunoreceptor Tyrosine-based Inhibitory Motif (ITIM), while KLRB1C/NKR-P1C lacks ITIM and activates via association with Fc Receptor  $\gamma$  chain. Strikingly, KLRB1B/NKR-P1B and KLRB1C/NKR-P1C share 96% amino acid sequence identity in their extracellular C-type lectin domains. The PK136 antibody reacts with the NK-1.1 surface antigen encoded by the *Klrk1c/NKR-P1C* gene expressed on natural killer (NK) cells in selected strains of mice (eg, C57BL, FVB/N, NZB, but not A, AKR, BALB/c, CBA/J, C3H, C57BR, C58, DBA/1, DBA/2, NOD, SJL, 129) and the antigen encoded by the *Klrk1b/NKR-P1B* gene expressed only on Swiss NIH and SJL mice, but not on C57BL/6. Expression of KLRB1C/NKR-P1C protein is correlated with the ability to lyse tumor cells in vitro and to mediate rejection of bone marrow allografts. The NK-1.1 marker is useful in defining NK cells; however, the antigen is also expressed on a rare, specialized population of T lymphocytes (NK-T cells) and some cultured monocytes. Plate-bound PK136 mAb, in combination with low concentrations of IL-2, induces proliferation of a subset of NK cells.



**Two-color analysis of NK-1.1 expression on splenocytes.** C57BL/6NHsd splenocytes were incubated simultaneously with FITC-conjugated anti-mouse CD3e mAb 145-2C11 (Cat. No. 553061/553062) and APC-conjugated mAb PK136. NK-1.1+ CD3e- NK cells and NK-1.1[dim] CD3e+ NK-T cells are detected. Flow cytometry was performed on a BD FACSCalibur™ flow cytometry system.

## Preparation and Storage

The monoclonal antibody was purified from tissue culture supernatant or ascites by affinity chromatography.

The antibody was conjugated to APC under optimum conditions, and unconjugated antibody and free APC were removed.

Store undiluted at 4°C and protected from prolonged exposure to light. Do not freeze.

## BD Biosciences

bdbiosciences.com

United States	Canada	Europe	Japan	Asia Pacific	Latin America/Caribbean
877.232.8995	888.268.5430	32.53.720.550	0120.8555.90	65.6861.0633	0800.771.7157

For country-specific contact information, visit [bdbiosciences.com/how\\_to\\_order/](http://bdbiosciences.com/how_to_order/)

Conditions: The information disclosed herein is not to be construed as a recommendation to use the above product in violation of any patents. BD Biosciences will not be held responsible for patent infringement or other violations that may occur with the use of our products. Purchase does not include or carry any right to resell or transfer this product either as a stand-alone product or as a component of another product. Any use of this product other than the permitted use without the express written authorization of Becton Dickinson and Company is strictly prohibited.

For Research Use Only. Not for use in diagnostic or therapeutic procedures. Not for resale.

BD, BD Logo and all other trademarks are the property of Becton, Dickinson and Company. ©2011 BD



## Application Notes

### Application

Flow cytometry

Routinely Tested

### Suggested Companion Products

<u>Catalog Number</u>	<u>Name</u>	<u>Size</u>	<u>Clone</u>
553061	FITC Hamster Anti-Mouse CD3e	0.1 mg	145-2C11
550882	APC Mouse IgG2a $\kappa$ Isotype Control	0.1 mg	G155-178

### Product Notices

1. Since applications vary, each investigator should titrate the reagent to obtain optimal results.
2. Please refer to [www.bdbiosciences.com/pharming/en/protocols](http://www.bdbiosciences.com/pharming/en/protocols) for technical protocols.
3. For fluorochrome spectra and suitable instrument settings, please refer to our Fluorochrome Web Page at [www.bdbiosciences.com/colors](http://www.bdbiosciences.com/colors).
4. Caution: Sodium azide yields highly toxic hydrazoic acid under acidic conditions. Dilute azide compounds in running water before discarding to avoid accumulation of potentially explosive deposits in plumbing.

### References

- Arase N, Arase H, Park SY, Ohno H, Ra C, Saito T. Association with FcRgamma is essential for activation signal through NKR-P1 (CD161) in natural killer (NK) cells and NK1.1+ T cells. *J Exp Med.* 1997; 186(12):1957-1963. (Biology)
- Carlyle JR, Martin A, Mehra A, Attisano L, Tsui FW, Zuniga-Pflucker JC. Mouse NKR-P1B, a novel NK1.1 antigen with inhibitory function. *J Immunol.* 1999; 162(10):5917-5923. (Clone-specific: Immunoprecipitation)
- Giorda R, Trucco M. Mouse NKR-P1. A family of genes selectively coexpressed in adherent lymphokine-activated killer cells. *J Immunol.* 1991; 147(5):1701-1708. (Biology)
- Koo GC, Peppard JR. Establishment of monoclonal anti-Nk-1.1 antibody. *Hybridoma.* 1984; 3(3):301-303. (Immunogen: Cytotoxicity, Flow cytometry)
- Kung SK, Su RC, Shannon J, Miller RG. The NKR-P1B gene product is an inhibitory receptor on SJL/J NK cells. *J Immunol.* 1999; 162(10):5876-5887. (Clone-specific: Blocking)
- Lanier LL. Natural killer cells: from no receptors to too many. *Immunity.* 1997; 6(4):371-378. (Biology)
- Reichlin A, Yokoyama WM. Natural killer cell proliferation induced by anti-NK1.1 and IL-2. *Immunol Cell Biol.* 1998; 76(2):143-152. (Clone-specific: Induction)
- Sentman CL, Kumar V, Koo G, Bennett M. Effector cell expression of NK1.1, a murine natural killer cell-specific molecule, and ability of mice to reject bone marrow allografts. *J Immunol.* 1989; 142(6):1847-1853. (Clone-specific: Depletion)
- Vicari AP, Zlotnik A. Mouse NK1.1+ T cells: a new family of T cells. *Immunol Today.* 1996; 17(2):71-76. (Biology)
- Yokoyama WM, Seaman WE. The Ly-49 and NKR-P1 gene families encoding lectin-like receptors on natural killer cells: the NK gene complex. *Annu Rev Immunol.* 1993; 11:613-635. (Biology)
- Yu YY, Kumar V, Bennett M. Murine natural killer cells and marrow graft rejection. *Annu Rev Immunol.* 1992; 10:189-213. (Biology)