

Purified anti-mouse CD138 (Syndecan-1) Antibody

Catalog# / Size	142501 / 25 µg 142502 / 500 µg
Clone	281-2
Other Names	Syndecan-1
Isotype	Rat IgG2a, κ
Description	CD138, a member of the syndecan protein family, is a type I integral membrane heparin sulfate proteoglycan also known as Syndecan-1. Syndecan-1 participates in cell proliferation, cell migration, and cell matrix adhesion via interaction with collagen, fibronectin, and other soluble molecules (such as FGF-basic). It is expressed on normal and malignant plasma cells, pre-B cells, mesenchymal cells, epithelial cells, and endothelial cells.

Product Details

Reactivity	Mouse
Antibody Type	Monoclonal
Host Species	Rat
Immunogen	Mouse mammary gland epithelial cell line NMuMG
Formulation	Phosphate-buffered solution, pH 7.2, containing 0.09% sodium azide.
Preparation	The antibody was purified by affinity chromatography.
Concentration	0.5 mg/ml
Storage & Handling	The antibody solution should be stored undiluted between 2°C and 8°C.
Application	FC - <i>Quality tested</i> ICC, IHC-P, IHC-F - <i>Reported in the literature</i>
Recommended Usage	Each lot of this antibody is quality control tested by immunofluorescent staining with flow cytometric analysis . For flow cytometric staining, the suggested use of this reagent is ≤ 1.0 µg per million cells in 100 µl volume. It is recommended that the reagent be titrated for optimal performance for each application.
Application Notes	Additional reported applications (for the relevant formats) include: immunohistochemical staining of frozen tissue ³ and formalin-fixed paraffin embedded tissue ⁴ and immunofluorescent staining ^{2,3} .
Application References (PubMed link indicates BioLegend citation)	<ol style="list-style-type: none"> 1. Jalkanen M, et al. 1985. J. Cell. Biol. 101:976. (FC) 2. Miettinen H, et al. 1994. J. Cell. Sci. 107:1571. (IF) 3. Li Q, et al. 2002. Cell 111:635. (IF, IHC) 4. McCarthy BA, et al. 2012. BMC Cancer. 12:203. (IHC)
Product Citations	<ol style="list-style-type: none"> 1. McBride KM, et al. 2019. Front Oncol. 9:517. PubMed 2. Crowell PD et al. 2019. Cell Rep. 28(6):1499-1510 . PubMed 3. Cui X, et al. 2017. J Immunol. 199:4066. PubMed
RRID	AB_10959655 (BioLegend Cat. No. 142501) AB_10965646 (BioLegend Cat. No. 142502)

Antigen Details

Structure	Transmembrane heparan sulfate proteoglycan; member of the syndecan proteoglycan family, 100-200 kD
Function	Cell adhesion, cell motility, cell migration, cell proliferation
Cell Type	B cells
Biology Area	Apoptosis/Tumor Suppressors/Cell Death, Cell Adhesion, Cell Biology, Cell

Motility/Cytoskeleton/Structure, Immunology

Molecular Family

Adhesion Molecules, CD Molecules

Antigen References

1. Zong F, et al. 2011. PLoS ONE 6:e14816.
2. Yamashita Y, et al. 1999. J. Immunol. 162:5940.
3. Sanderson RD, et al. 1989. Cell. Regul. 1:27.

Gene ID

20969

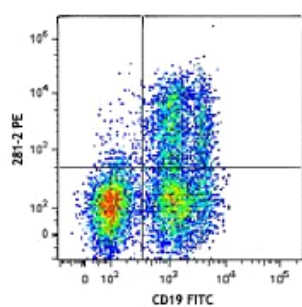
Related Protocols

[Cell Surface Flow Cytometry Staining Protocol](#)

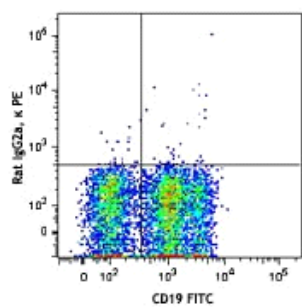
Other Formats

PE anti-mouse CD138 (Syndecan-1), APC anti-mouse CD138 (Syndecan-1), Brilliant Violet 421™ anti-mouse CD138 (Syndecan-1), PerCP/Cyanine5.5 anti-mouse CD138 (Syndecan-1), Biotin anti-mouse CD138 (Syndecan-1), PE/Cyanine7 anti-mouse CD138 (Syndecan-1), Brilliant Violet 605™ anti-mouse CD138 (Syndecan-1), Brilliant Violet 650™ anti-mouse CD138 (Syndecan-1), Brilliant Violet 711™ anti-mouse CD138 (Syndecan-1), Brilliant Violet 510™ anti-mouse CD138 (Syndecan-1), Alexa Fluor® 647 anti-mouse CD138 (Syndecan-1), PE/Dazzle™ 594 anti-mouse CD138 (Syndecan-1), APC/Cyanine7 anti-mouse CD138 (Syndecan-1), TotalSeq™-A0810 anti-mouse CD138 (Syndecan-1), Brilliant Violet 785™ anti-mouse CD138 (Syndecan-1), TotalSeq™-B0810 anti-mouse CD138 (Syndecan-1)

Product Data



C57BL/6 mouse bone marrow cells were stained with CD19 FITC and CD138 (clone 281-2) PE (top) or rat IgG2a, κ PE isotype control (bottom). Data shown is from gated on myeloid population.



For research use only. Not for diagnostic use. Not for resale. BioLegend will not be held responsible for patent infringement or other violations that may occur with the use of our products.

*These products may be covered by one or more Limited Use Label Licenses (see the BioLegend Catalog or our website, www.biolegend.com/ordering#license). BioLegend products may not be transferred to third parties, resold, modified for resale, or used to manufacture commercial products, reverse engineer functionally similar materials, or to provide a service to third parties without written approval of BioLegend. By use of these products you accept the terms and conditions of all applicable Limited Use Label Licenses. Unless otherwise indicated, these products are for research use only and are not intended for human or animal diagnostic, therapeutic or commercial use.

BioLegend Inc., 8999 BioLegend Way, San Diego, CA 92121 www.biolegend.com
Toll-Free Phone: 1-877-Bio-Legend (246-5343) Phone: (858) 768-5800 Fax: (877) 455-9587