

CD279 (PD-1) Monoclonal Antibody (RMP1-30), FITC, eBioscience™

Product Details	
Size	100 µg
Species Reactivity	Mouse
Published Species	Mouse
Host/Isotope	Rat / IgG2b, kappa
Recommended Isotype Control	Rat IgG2b kappa Isotype Control (eB149/10H5), FITC, eBioscience™
Class	Monoclonal
Type	Antibody
Clone	RMP1-30
Conjugate	FITC
Form	Liquid
Concentration	0.5 mg/mL
Purification	Affinity chromatography
Storage buffer	PBS, pH 7.2, with 0.1% gelatin
Contains	0.09% sodium azide
Storage Conditions	4° C, store in dark, DO NOT FREEZE!
RRID	AB_465467

Applications	Tested Dilution	Publications
Flow Cytometry (Flow)	0.5 µg/test	5 Publications

Product Specific Information

Description: The RMP1-30 antibody reacts with mouse PD-1 (programmed death-1), a 55 kDa member of the Ig superfamily. PD-1 contains the immunoreceptor tyrosine-based inhibitory motif (ITIM) and plays a key role in peripheral tolerance and autoimmune disease in mice. PD-1 is expressed mainly on activated T and B lymphocytes. Two novel B7 Family members have been identified as PD-1 ligands, PD-L1 (B7-H1) and PD-L2 (B7-DC). Evidence reported to date suggests overlapping functions for these ligands and their constitutive expression on some normal tissues and upregulation on activated antigen-presenting cells. RMP1-30 does not block the binding of either B7-H1-Ig or B7-DC-Ig to PD-1 transfectants.

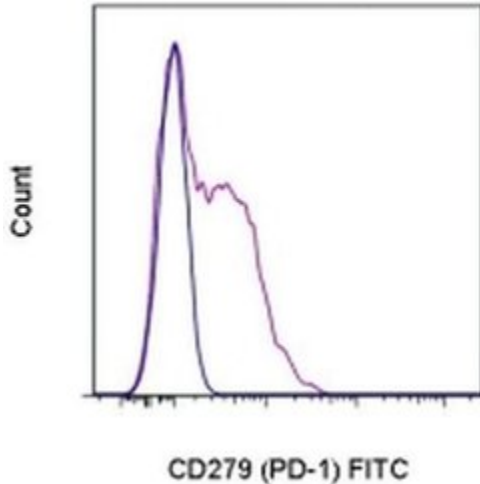
Applications Reported: The RMP1-30 antibody has been reported for use in flow cytometric analysis.

Applications Tested: The RMP1-30 antibody has been tested by flow cytometric analysis of Con A-stimulated mouse splenocytes. This can be used at less than or equal to 0.5 µg per test. A test is defined as the amount (µg) of antibody that will stain a cell sample in a final volume of 100 µL. Cell number should be determined empirically but can range from 10⁵ to 10⁸ cells/test. It is recommended that the antibody be carefully titrated for optimal performance in the assay of interest.

Excitation: 488 nm; Emission: 520 nm; Laser: Blue Laser.

Filtration: 0.2 µm post-manufacturing filtered.

Product Images For CD279 (PD-1) Monoclonal Antibody (RMP1-30), FITC, eBioscience™



CD279 (PD-1) Antibody (11-9981-82) in Flow

Staining of 3-day Anti-Mouse CD3 and Anti-Mouse CD28 Functional Grade Purified (Product # 16-0031-82 and Product # 16-0281-82)-stimulated C57Bl/6 splenocytes with 0.25 µg of Rat IgG2b K Isotype Control FITC (Product # 11-4031-82) (blue histogram) or 0.25 µg of Anti-Mouse CD279 (PD-1) FITC (purple histogram). Total viable cells, as determined by Fixable Viability Dye eFluor® 450 (Product # 65-0863-14), were used for analysis.

5 References

Flow Cytometry (5)

The Journal of experimental medicine

ILC2s regulate adaptive Th2 cell functions via PD-L1 checkpoint control.

"11-9981 was used in Flow cytometry/Cell sorting to study how group 2 innate lymphoid cells regulate adaptive Th2 cell functions."

Authors: Schwartz C, Khan AR, Floudas A, Saunders SP, Hams E, Rodewald HR, McKenzie ANJ, Fallon PG

Species
Mouse

Dilution
Not Cited

Year
2017

The Journal of clinical investigation

Antitumor adaptive immunity remains intact following inhibition of autophagy and antimalarial treatment.

"11-9981 was used in Flow cytometry/Cell sorting to evaluate how autophagy inhibition impacts the antitumor immune response in immune-competent mouse models of melanoma and mammary cancer."

Authors: Starobinets H, Ye J, Broz M, Barry K, Goldsmith J, Marsh T, Rostker F, Krummel M, Debnath J

Species
Mouse

Dilution
1:400

Year
2016

[View more Flow references on thermofisher.com](#)

More applications with references on thermofisher.com

For Research Use Only. Not for use in diagnostic procedures. Not for resale without express authorization. Products are warranted to operate or perform substantially in conformance with published Product specifications in effect at the time of sale, as set forth in the Production documentation, specifications and/or accompanying package inserts ("Documentation"). No claim of suitability for use in applications regulated by FDA is made. The warranty provided herein is valid only when used by properly trained individuals. Unless otherwise stated in the Documentation, this warranty is limited to one year from date of shipment when the Product is subjected to normal, proper and intended usage. This warranty does not extend to anyone other than the Buyer. Any model or sample furnished to Buyer is merely illustrative of the general type and quality of goods and does not represent that any Product will conform to such model or sample. NO OTHER WARRANTIES, EXPRESS OR IMPLIED, ARE GRANTED INCLUDING WITHOUT LIMITATION, IMPLIED WARRANTIES OF MERCHANTABILITY, FITNESS FOR ANY PARTICULAR PURPOSE, OR NON INFRINGEMENT. BUYER'S EXCLUSIVE REMEDY FOR NON-CONFORMING PRODUCTS DURING THE WARRANTY PERIOD IS LIMITED TO REPAIR, REPLACEMENT OF OR REFUND FOR THE NON-CONFORMING PRODUCT(S) AT SELLER'S SOLE OPTION. THERE IS NO OBLIGATION TO REPAIR, REPLACE OR REFUND FOR PRODUCTS AS THE RESULT OF (I) ACCIDENT, DISASTER OR EVENT OF FORCE MAJEURE, (II) MISUSE, FAULT OR NEGLIGENCE OF OR BY BUYER, (III) USE OF THE PRODUCTS IN A MANNER FOR WHICH THEY WERE NOT DESIGNED, OR (IV) IMPROPER STORAGE AND HANDLING OF THE PRODUCTS. Unless otherwise expressly stated on the Product or in the documentation accompanying the Product, the Product is intended for research only and is not to be used for any other purpose, including without limitation, unauthorized commercial uses, in vitro diagnostic uses, ex vivo or in vivo therapeutic uses, or any type of consumption by or application to human or animals.