

# CD49f (Integrin alpha 6) Monoclonal Antibody (eBioGoH3 (GoH3)), eFluor 450, eBioscience™

Product Details	
Size	100 µg
Species Reactivity	Human, Mouse
Published Species	Mouse, Human
Host/Isotope	Rat / IgG2a, kappa
Recommended Isotype Control	Rat IgG2a kappa Isotype Control (eBR2a), eFluor 450, eBioscience™
Class	Monoclonal
Type	Antibody
Clone	eBioGoH3 (GoH3)
Conjugate	eFluor® 450
Form	Liquid
Concentration	0.2 mg/mL
Purification	Affinity chromatography
Storage buffer	PBS, pH 7.2, with 0.1% gelatin
Contains	0.09% sodium azide
Storage Conditions	4° C, store in dark, DO NOT FREEZE!
RRID	AB_11042564

Applications	Tested Dilution	Publications
Flow Cytometry (Flow)	0.125 µg/test	24 Publications
Immunofluorescence (IF)	-	1 Publication

## Product Specific Information

Description: The eBioGoH3 monoclonal antibody reacts with mouse and human CD49f, also known as integrin alpha 6, very late activation antigen 6 (VLA-6 alpha chain), and platelet gplc. CD49f is a 120 kD transmembrane protein. CD49f associates with CD29, the integrin beta 1 chain, to form the VLA-6 complex; CD49f also associates with CD104, the integrin beta 4 chain, to form the alpha 6 beta 4 complex. CD49f is expressed primarily on T cells, monocytes, platelets, epithelial and endothelial cells. CD49f expression has also been found on germinal center B cells. The eBioGoH3 antibody is cross-reactive to integrin alpha 6 on human, mouse and bovine cells. This antibody has also been reported to have functional activity in blocking the binding of integrin alpha 6 to laminin.

Applications Reported: This eBioGoH3 (GoH3) antibody has been reported for use in flow cytometric analysis.

Applications Tested: This eBioGoH3 (GoH3) antibody has been tested by flow cytometric analysis of normal human peripheral blood cells. This can be used at less than or equal to 0.125 µg per test. A test is defined as the amount (µg) of antibody that will stain a cell sample in a final volume of 100 µL. Cell number should be determined empirically but can range from 10<sup>5</sup> to 10<sup>8</sup> cells /test. It is recommended that the antibody be carefully titrated for optimal performance in the assay of interest.

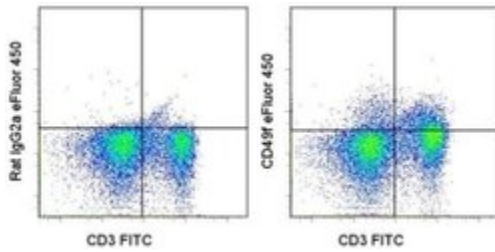
eFluor® 450 is an alternative to Pacific Blue®. eFluor® 450 emits at 445 nm and is excited with the Violet laser (405 nm). Please

make sure that your instrument is capable of detecting this fluorochrome.

Excitation: 405 nm; Emission: 445 nm; Laser: Violet Laser.

Filtration: 0.2 µm post-manufacturing filtered.

## Product Images For CD49f (Integrin alpha 6) Monoclonal Antibody (eBioGoH3 (GoH3)), eFluor 450, eBioscience™



### CD49f (Integrin alpha 6) Antibody (48-0495-82) in Flow

Staining of C57Bl/6 splenocytes with Anti-Mouse CD3e FITC (Product # 11-0031-82) and 0.06 µg of Rat IgG2a K Isotype Control eFluor® 450 (Product # 48-4321-82) (left) or 0.06 µg of Anti-Human/Mouse CD49f (Integrin alpha 6) eFluor® 450 (right). Total viable cells were used for analysis.

View more figures on [thermofisher.com](http://thermofisher.com)

## 25 References

### Flow Cytometry (24)

Breast cancer research : BCR

#### Integrin-Rac signalling for mammary epithelial stem cell self-renewal.

"Published figure using CD49f (Integrin alpha 6) monoclonal antibody (Product # 48-0495-82) in Flow Cytometry"  
Authors: Olabi S,Ucar A,Brennan K,Streuli CH

**Species**  
Mouse

**Dilution**  
1:1,000

**Year**  
2018

Nature

#### Inflammatory memory sensitizes skin epithelial stem cells to tissue damage.

"Published figure using CD49f (Integrin alpha 6) monoclonal antibody (Product # 48-0495-82) in Flow Cytometry"  
Authors: Naik S,Larsen SB,Gomez NC,Alaverdyan K,Sendoel A,Yuan S,Polak L,Kulukian A,Chai S,Fuchs E

**Species**  
Not Applicable

**Dilution**  
Not Cited

**Year**  
2017

[View more Flow references on thermofisher.com](#)

### Immunofluorescence (1)

Breast cancer research : BCR

#### Evidence for a multipotent mammary progenitor with pregnancy-specific activity.

"Published figure using CD49f (Integrin alpha 6) monoclonal antibody (Product # 48-0495-82) in Flow Cytometry"  
Authors: Kaanta AS,Virtanen C,Selfors LM,Brugge JS,Neel BG

**Species**  
Not Applicable

**Dilution**  
Not Cited

**Year**  
2014

### More applications with references on thermofisher.com

For Research Use Only. Not for use in diagnostic procedures. Not for resale without express authorization. Products are warranted to operate or perform substantially in conformance with published Product specifications in effect at the time of sale, as set forth in the Production documentation, specifications and/or accompanying package inserts ("Documentation"). No claim of suitability for use in applications regulated by FDA is made. The warranty provided herein is valid only when used by properly trained individuals. Unless otherwise stated in the Documentation, this warranty is limited to one year from date of shipment when the Product is subjected to normal, proper and intended usage. This warranty does not extend to anyone other than the Buyer. Any model or sample furnished to Buyer is merely illustrative of the general type and quality of goods and does not represent that any Product will conform to such model or sample. NO OTHER WARRANTIES, EXPRESS OR IMPLIED, ARE GRANTED INCLUDING WITHOUT LIMITATION, IMPLIED WARRANTIES OF MERCHANTABILITY, FITNESS FOR ANY PARTICULAR PURPOSE, OR NON INFRINGEMENT. BUYER'S EXCLUSIVE REMEDY FOR NON-CONFORMING PRODUCTS DURING THE WARRANTY PERIOD IS LIMITED TO REPAIR, REPLACEMENT OF OR REFUND FOR THE NON-CONFORMING PRODUCT(S) AT SELLER'S SOLE OPTION. THERE IS NO OBLIGATION TO REPAIR, REPLACE OR REFUND FOR PRODUCTS AS THE RESULT OF (I) ACCIDENT, DISASTER OR EVENT OF FORCE MAJEURE, (II) MISUSE, FAULT OR NEGLIGENCE OF OR BY BUYER, (III) USE OF THE PRODUCTS IN A MANNER FOR WHICH THEY WERE NOT DESIGNED, OR (IV) IMPROPER STORAGE AND HANDLING OF THE PRODUCTS. Unless otherwise expressly stated on the Product or in the documentation accompanying the Product, the Product is intended for research only and is not to be used for any other purpose, including without limitation, unauthorized commercial uses, in vitro diagnostic uses, ex vivo or in vivo therapeutic uses, or any type of consumption by or application to human or animals.