

## Product datasheet for TA400001

### LGR5 Mouse Monoclonal Antibody [Clone ID: OTI2A2]

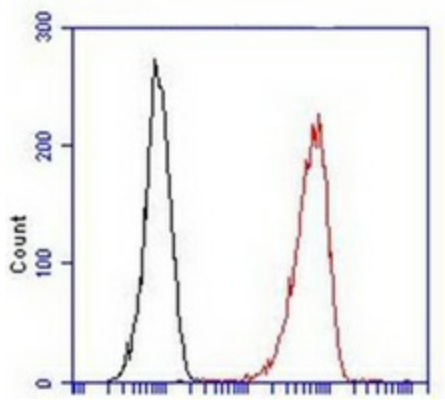
#### Product data:

Product Type:	Primary Antibodies
Clone Name:	OTI2A2
Applications:	FC, IHC
Recommend Dilution:	FC:1:50
Reactivity:	Human, Mouse
Host:	Mouse
Isotype:	IgG1
Clonality:	Monoclonal
Immunogen:	Human recombinant protein fragment corresponding to amino acids 250-550 of human LGR5 (NP_003658) produced in HEK293T Cell.
Formulation:	PBS (pH7.4) containing 0.02% NaN <sub>3</sub> ; store at 4C, do not freeze
Concentration:	0.5 mg/ml
Purification:	Purified from mouse ascites fluids by affinity chromatography
Conjugation:	PE
Storage:	Store at 4°C.
Stability:	Stable for 12 months from date of receipt.
Predicted Protein Size:	99.8 kDa
Gene Name:	leucine rich repeat containing G protein-coupled receptor 5
Database Link:	<a href="#">NP_003658 Entrez Gene 14160 Mouse</a> <a href="#">Entrez Gene 8549 Human</a>
Synonyms:	FEX; GPR49; GPR67; GRP49; HG38
Protein Families:	Druggable Genome, GPCR, Transmembrane



[View online »](#)

Product images:



HT29 cells are fixed with 2% formaldehyde for 20 min at RT, then stained with PE-labeled 2A2 anti-Lgr5 antibody. Black line: isotope control; Red line: anti-Lgr5-PE.

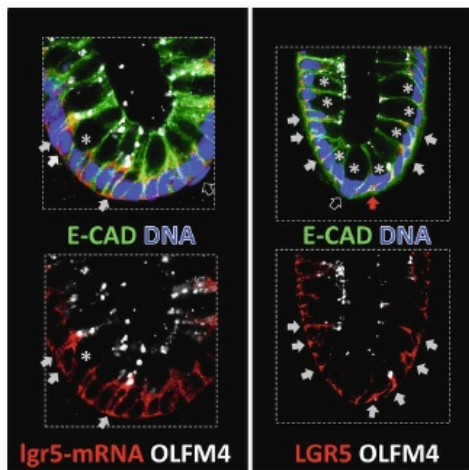


Figure from citation: Immunohistochemistry analysis of stem cell marker LGR5 by using anti-LGR5 antibody in native human colonic crypts microdissected from a fixed biopsy specimen. [View Citation](#)

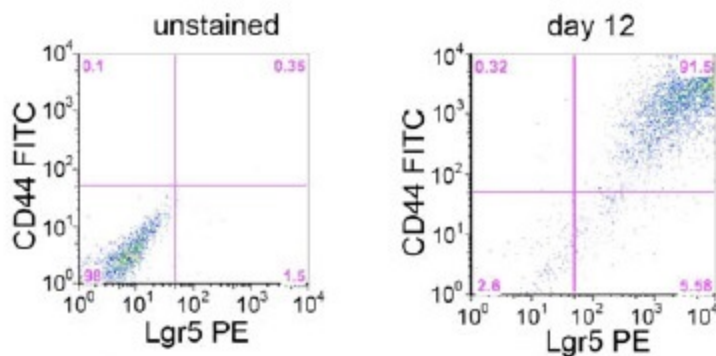


Figure from citation: Flow cytometric analysis of gated cells co-expressing CD44 and LGR5 using FITC anti-CD44 antibody and anti-LGR5 PE conjugated antibody (TA400001). Dilution: 1:50 [View Citation](#)

