

CD23 Monoclonal Antibody (EBVCS2), eBioscience™

| Product Details | |
|--------------------|-------------------------|
| Size | 100 µg |
| Species Reactivity | Human |
| Published Species | Human |
| Host/Isotope | Mouse / IgG1, kappa |
| Class | Monoclonal |
| Type | Antibody |
| Clone | EBVCS2 |
| Conjugate | Unconjugated |
| Form | Liquid |
| Concentration | 0.5 mg/mL |
| Purification | Affinity chromatography |
| Storage buffer | PBS, pH 7.2 |
| Contains | 0.09% sodium azide |
| Storage Conditions | 4° C |
| RRID | AB_467165 |

| Applications | Tested Dilution | Publications |
|---|-----------------|----------------|
| Flow Cytometry (Flow) | 0.5 µg/test | 2 Publications |
| Immunohistochemistry (Frozen) (IHC (F)) | Assay-Dependent | - |

Product Specific Information

Description: The EBVCS2 monoclonal antibody reacts with human CD23, a 45 kDa type II transmembrane glycoprotein. CD23 is expressed on mature B cells, mantle zone B cells, follicular dendritic cells and at low levels on T, NK, langerhans cells and platelets. Expression of CD23 is upregulated upon B cell activation, and soluble forms of the antigen have been reported to be biologically active. CD23 is a low affinity receptor for IgE and is thought to play a role in the regulation of IgE response and B cell activation. CD21 and the alpha subunit of CD11b and CD11c bind to CD23.

Applications Reported: The EBVCS2 antibody has been reported for use in flow cytometric analysis, and immunohistochemical staining of frozen tissue sections.

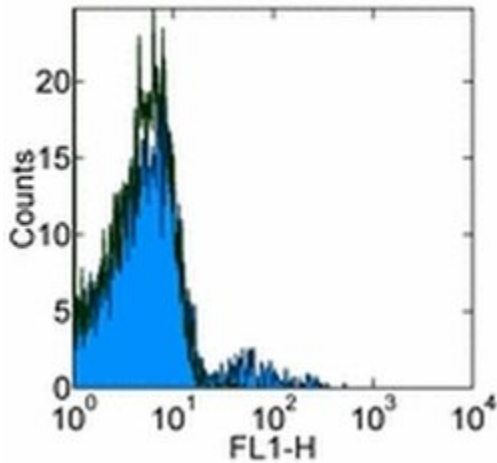
Applications Tested: The EBVCS2 antibody has been tested by flow cytometric analysis of normal human peripheral blood cells. This can be used at less than or equal to 0.5 µg per test. A test is defined as the amount (µg) of antibody that will stain a cell sample in a final volume of 100 µL. Cell number should be determined empirically but can range from 10⁵ to 10⁸ cells/test. It is recommended that the antibody be carefully titrated for optimal performance in the assay of interest.

Purity: Greater than 90%, as determined by SDS-PAGE.

Aggregation: Less than 10%, as determined by HPLC.

Filtration: 0.2 µm post-manufacturing filtered.

Product Images For CD23 Monoclonal Antibody (EBVCS2), eBioscience™



CD23 Antibody (14-0238-82) in Flow

Staining of normal human peripheral blood cells with 0.5 µg of Mouse IgG1 kappa Isotype Control Purified (Product # 14-4714-82) (open histogram) or 0.25 µg of Anti-Human CD23 Purified (filled histogram) followed by Anti-Mouse IgG FITC (Product # 11-4011-85). Cells in the lymphocyte gate were used for analysis.

[View more figures on thermofisher.com](#)

2 References

Flow Cytometry (2)

Cell reports

Chronic lymphocytic leukemia cells are activated and proliferate in response to specific T helper cells.

"14-0238 was used in Flow cytometry/Cell sorting to investigate the role of T helper cells in the mechanisms that promote chronic lymphocytic leukemia (CLL) cell survival and proliferation, showing that T helper cells could activate CLL cells in a contact- and CD40L-dependent manner."

Authors: Os A, Bürigler S, Ribes AP, Funderud A, Wang D, Thompson KM, Tjønnfjord GE, Bogen B, Munthe LA

Species
Human

Dilution
Not Cited

Year
2013

Immunology

Interleukin-25 fails to activate STAT6 and induce alternatively activated macrophages.

"Published figure using CD23 monoclonal antibody (Product # 14-0238-82) in Flow Cytometry"

Authors: Stolfi C, Caruso R, Franzè E, Sarra M, De Nitto D, Rizzo A, Pallone F, Monteleone G

Species
Not Applicable

Dilution
Not Cited

Year
2011

For Research Use Only. Not for use in diagnostic procedures. Not for resale without express authorization. Products are warranted to operate or perform substantially in conformance with published Product specifications in effect at the time of sale, as set forth in the Production documentation, specifications and/or accompanying package inserts ("Documentation"). No claim of suitability for use in applications regulated by FDA is made. The warranty provided herein is valid only when used by properly trained individuals. Unless otherwise stated in the Documentation, this warranty is limited to one year from date of shipment when the Product is subjected to normal, proper and intended usage. This warranty does not extend to anyone other than the Buyer. Any model or sample furnished to Buyer is merely illustrative of the general type and quality of goods and does not represent that any Product will conform to such model or sample. NO OTHER WARRANTIES, EXPRESS OR IMPLIED, ARE GRANTED INCLUDING WITHOUT LIMITATION, IMPLIED WARRANTIES OF MERCHANTABILITY, FITNESS FOR ANY PARTICULAR PURPOSE, OR NON-INFRINGEMENT. BUYER'S EXCLUSIVE REMEDY FOR NON-CONFORMING PRODUCTS DURING THE WARRANTY PERIOD IS LIMITED TO REPAIR, REPLACEMENT OF OR REFUND FOR THE NON-CONFORMING PRODUCT(S) AT SELLER'S SOLE OPTION. THERE IS NO OBLIGATION TO REPAIR, REPLACE OR REFUND FOR PRODUCTS AS THE RESULT OF (I) ACCIDENT, DISASTER OR EVENT OF FORCE MAJEURE, (II) MISUSE, FAULT OR NEGLIGENCE OF OR BY BUYER, (III) USE OF THE PRODUCTS IN A MANNER FOR WHICH THEY WERE NOT DESIGNED, OR (IV) IMPROPER STORAGE AND HANDLING OF THE PRODUCTS. Unless otherwise expressly stated on the Product or in the documentation accompanying the Product, the Product is intended for research only and is not to be used for any other purpose, including without limitation, unauthorized commercial uses, in vitro diagnostic uses, ex vivo or in vivo therapeutic uses, or any type of consumption by or application to human or animals.