

CD33 Monoclonal Antibody (WM-53 (WM53)), PE, eBioscience™

Product Details	
Size	100 Tests
Species Reactivity	Human
Published Species	Human
Host/Isotope	Mouse / IgG1, kappa
Recommended Isotype Control	Mouse IgG1 kappa Isotype Control (P3.6.2.8.1), PE, eBioscience™
Class	Monoclonal
Type	Antibody
Clone	WM-53 (WM53)
Conjugate	PE
Form	Liquid
Concentration	5 µL/Test
Purification	Affinity chromatography
Storage buffer	PBS, pH 7.2, with 0.1% gelatin, 0.2% BSA
Contains	0.09% sodium azide
Storage Conditions	4° C, store in dark, DO NOT FREEZE!
RRID	AB_10855036

Applications	Tested Dilution	Publications
Flow Cytometry (Flow)	5 µL (0.25 µg)/test	8 Publications

Product Specific Information

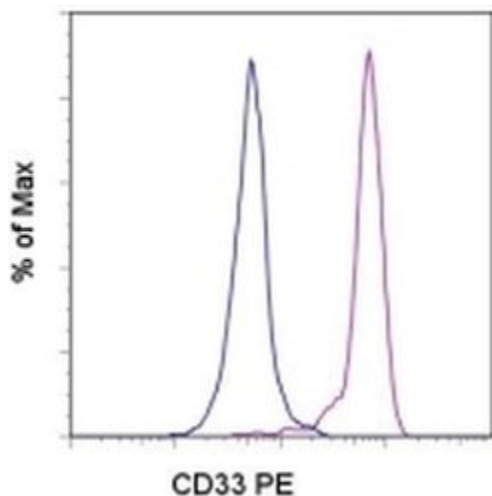
Description: The WM-53 monoclonal antibody reacts with human CD33, also known as GP67 and P67, a 67 kDa type I transmembrane glycoprotein that is a member of the Siglec (sialic acid-binding Ig superfamily lectin) family. It is highly specific to the hematopoietic compartment and is expressed on monocytes, activated T cells, granulocytes, myeloid progenitors, and mast cells.

Applications Reported: The WM-53 (WM53) antibody has been reported for use in flow cytometric analysis.

Applications Tested: This WM-53 (WM53) antibody has been pre-titrated and tested by flow cytometric analysis of normal human lysed whole blood. This can be used at 5 µL (0.25 µg) per test. A test is defined as the amount (µg) of antibody that will stain a cell sample in a final volume of 100 µL. Cell number should be determined empirically but can range from 10⁵ to 10⁸ cells/test.

Excitation: 488-561 nm; **Emission:** 578 nm; **Laser:** Blue Laser, Green Laser, Yellow-Green Laser.

Filtration: 0.2 µm post-manufacturing filtered.



CD33 Antibody (12-0338-42) in Flow

Staining of normal human peripheral blood cells with Mouse IgG1 kappa Isotype Control PE (Product # 12-4714-81) (blue histogram) or Anti-Human CD33 PE (purple histogram). Cells in the monocyte gate were used for analysis.

[View more figures on thermofisher.com](#)

8 References

Flow Cytometry (8)

Oncotarget

Surrogate in vitro activation of innate immunity synergizes with interleukin-7 to unleash rapid antigen-driven outgrowth of CD4+ and CD8+ human peripheral blood T-cells naturally recognizing MUC1, HER2 /neu and other tumor-associated antigens.

"Published figure using CD33 monoclonal antibody (Product # 12-0338-42) in Flow Cytometry"

Authors: Pathangey LB,McCurry DB,Gendler SJ,Dominguez AL,Gorman JE,Pathangey G,Mihalik LA,Dang Y,Disis ML,Cohen PA

Species

Not Applicable

Dilution

Not Cited

Year

2017

Nature communications

CD19 CAR immune pressure induces B-precursor acute lymphoblastic leukaemia lineage switch exposing inherent leukaemic plasticity.

"12-0338 was used in Flow cytometry/Cell sorting to study how CD19 CAR immune pressure induces a B-precursor acute lymphoblastic leukaemia lineage switch."

Authors: Jacoby E,Nguyen SM,Fountaine TJ,Welp K,Gryder B,Qin H,Yang Y,Chien CD,Seif AE,Lei H,Song YK,Khan J, Lee DW,Mackall CL,Gardner RA,Jensen MC,Shern JF,Fry TJ

Species

Human

Dilution

Not Cited

Year

2016

[View more Flow references on thermofisher.com](#)

More applications with references on thermofisher.com

For Research Use Only. Not for use in diagnostic procedures. Not for resale without express authorization. Products are warranted to operate or perform substantially in conformance with published Product specifications in effect at the time of sale, as set forth in the Production documentation, specifications and/or accompanying package inserts ("Documentation"). No claim of suitability for use in applications regulated by FDA is made. The warranty provided herein is valid only when used by properly trained individuals. Unless otherwise stated in the Documentation, this warranty is limited to one year from date of shipment when the Product is subjected to normal, proper and intended usage. This warranty does not extend to anyone other than the Buyer. Any model or sample furnished to Buyer is merely illustrative of the general type and quality of goods and does not represent that any Product will conform to such model or sample. NO OTHER WARRANTIES, EXPRESS OR IMPLIED, ARE GRANTED INCLUDING WITHOUT LIMITATION, IMPLIED WARRANTIES OF MERCHANTABILITY, FITNESS FOR ANY PARTICULAR PURPOSE, OR NON-INFRINGEMENT. BUYER'S EXCLUSIVE REMEDY FOR NON-CONFORMING PRODUCTS DURING THE WARRANTY PERIOD IS LIMITED TO REPAIR, REPLACEMENT OF OR REFUND FOR THE NON-CONFORMING PRODUCT(S) AT SELLER'S SOLE OPTION. THERE IS NO OBLIGATION TO REPAIR, REPLACE OR REFUND FOR PRODUCTS AS THE RESULT OF (I) ACCIDENT, DISASTER OR EVENT OF FORCE MAJEURE, (II) MISUSE, FAULT OR NEGLIGENCE OF OR BY BUYER, (III) USE OF THE PRODUCTS IN A MANNER FOR WHICH THEY WERE NOT DESIGNED, OR (IV) IMPROPER STORAGE AND HANDLING OF THE PRODUCTS. Unless otherwise expressly stated on the Product or in the documentation accompanying the Product, the Product is intended for research only and is not to be used for any other purpose, including without limitation, unauthorized commercial uses, in vitro diagnostic uses, ex vivo or in vivo therapeutic uses, or any type of consumption by or application to human or animals.