

PE anti-human CD52 Antibody

Catalog# / Size	316005 / 25 tests 316006 / 100 tests
Clone	HI186
Workshop	HCDM listed
Other Names	Cambridge pathology antigen 1 (CAMPATH-1), epididymal secretory protein 1
Isotype	Mouse IgG2a, κ
Description	CD52, also known as Cambridge pathology antigen 1 (CAMPATH-1), is a 25-29 kD glycoprotein containing a large N-linked carbohydrate moiety. The actual molecule of CD52 is only 8-9 kD. It is expressed in the male reproductive tract and on virtually all lymphocytes (T and B cells), as well as macrophages/monocytes, eosinophils, and red cells. CD52 is thought to play a role in carrying and orienting carbohydrates. CD52 is a potent target for complement-mediated lysis and antibody-mediated cellular cytotoxicity and has been used as a depletion target for chronic lymphocytic leukemia (CLL)/lymphoma and immunosuppression. The HI186 antibody is useful for flow cytometry and immunohistochemistry.

Product Details

Reactivity	Human, Cynomolgus, Rhesus
Antibody Type	Monoclonal
Host Species	Mouse
Immunogen	Human tonsil
Formulation	Phosphate-buffered solution, pH 7.2, containing 0.09% sodium azide and 0.2% (w/v) BSA (origin USA).
Preparation	The antibody was purified by affinity chromatography, and conjugated with PE under optimal conditions.
Concentration	Lot-specific (please contact technical support for concentration and total µg amount, or use our Lookup tool if you have a lot number.)
Storage & Handling	The antibody solution should be stored undiluted between 2°C and 8°C, and protected from prolonged exposure to light. Do not freeze.
Application	FC - Quality tested
Recommended Usage	Each lot of this antibody is quality control tested by immunofluorescent staining with flow cytometric analysis . For flow cytometric staining, the suggested use of this reagent is 5 µl per million cells in 100 µl staining volume or 5 µl per 100 µl of whole blood.
Excitation Laser	Blue Laser (488 nm) Green Laser (532 nm)/Yellow-Green Laser (561 nm)
Application Notes	Additional reported applications (for the relevant formats) include: immunohistochemical staining of formalin-fixed paraffin-embedded tissue sections.
Application References (PubMed link indicates BioLegend citation)	1. Kishimoto T, et al. Eds. 1997. Leucocyte Typing VI. Garland Publishing Inc. London.

Product Citations

1. Hotta R, et al. 2016. PLoS One. 11: 0161618. PubMed

RRID

AB_830790 (BioLegend Cat. No. 316005)
AB_830791 (BioLegend Cat. No. 316006)

Antigen Details

Structure	Unusually small glycopeptide containing N-linked carbohydrate moiety, GPI-linked membrane protein, approximate molecular weight 7 kD
Distribution	Male reproductive tract (epididymis, seminal vesicle), T cells, B cells, macrophage/monocyte, eosinophil, erythrocytes, malignant lymphocytes
Function	Thought to play a role in carrying and orienting carbohydrates. Target for complement-mediated lysis and antibody-dependent cellular cytotoxicity, used as a depletion target for chronic lymphocytic leukemia/lymphoma therapy and immunosuppression.
Cell Type	B cells, Eosinophils, Erythrocytes, Macrophages, Monocytes, T cells
Biology Area	Costimulatory Molecules, Immunology
Molecular Family	CD Molecules
Antigen References	<ol style="list-style-type: none"> 1. Leukocyte Typing VI. Kishimoto T, et al. (Eds.) Garland Publishing Inc. (1997) 2. Xia MQ, et al. 1991. Eur. J. Immunol. 21:1677. 3. Kirchhoff C, et al. 1993. Mol. Reprod. Dev. 34:8. 4. Xia MQ, et al. 1993. Biochem. J. 293:633.
Gene ID	1043

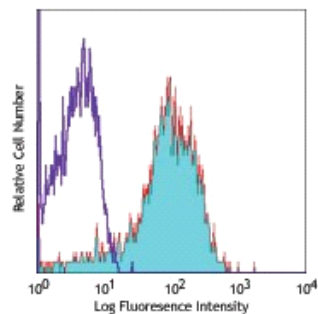
Related Protocols

[Cell Surface Flow Cytometry Staining Protocol](#)

Other Formats

PE/Cyanine7 anti-human CD52, Purified anti-human CD52, FITC anti-human CD52, APC anti-human CD52, APC/Fire™ 750 anti-human CD52, PerCP/Cyanine5.5 anti-human CD52, PE/Dazzle™ 594 anti-human CD52, TotalSeq™-A0033 anti-human CD52, TotalSeq™-C0033 anti-human CD52, PE/Cyanine5 anti-human CD52

Product Data



Human peripheral blood lymphocytes stained with HI186 PE

For research use only. Not for diagnostic use. Not for resale. BioLegend will not be held responsible for patent infringement or other violations that may occur with the use of our products.

*These products may be covered by one or more Limited Use Label Licenses (see the BioLegend Catalog or our website, www.biolegend.com/ordering#license). BioLegend products may not be transferred to third parties, resold, modified for resale, or used to manufacture commercial products, reverse engineer functionally similar materials, or to provide a service to third parties without written approval of BioLegend. By use of these products you accept the terms and conditions of all applicable Limited Use Label Licenses. Unless otherwise indicated, these products are for research use only and are not intended for human or animal diagnostic, therapeutic or commercial use.

8999 BioLegend Way, San Diego, CA 92121 www.biolegend.com
Toll-Free Phone: 1-877-Bio-Legend (246-5343) Phone: (858) 768-5800 Fax: (877) 455-9587