

PE anti-human CD96 (TACTILE) Antibody

Catalog# / Size	338405 / 25 tests 338406 / 100 tests
Clone	NK92.39
Other Names	Tactile (T cell-activated increased late expression)
Isotype	Mouse IgG1, κ
Description	CD96, known as TACTILE (T cell-activated increased late expression), is a 160 kD type I transmembrane glycoprotein and is a member of the Ig superfamily molecules. It is expressed on NK cells, T cells (up-regulated upon activation), and some acute myeloid leukemia (AML) cells, but not on normal B and myeloid cells. A soluble form of CD96 has been found in serum. CD96 is involved in T- and NK-cell adhesion through interaction with its ligand, CD155 (polio virus receptor).

Product Details

Reactivity	Human
Antibody Type	Monoclonal
Host Species	Mouse
Formulation	Phosphate-buffered solution, pH 7.2, containing 0.09% sodium azide and 0.2% (w/v) BSA (origin USA).
Preparation	The antibody was purified by affinity chromatography, and conjugated with PE under optimal conditions.
Concentration	Lot-specific (please contact technical support for concentration and total µg amount, or use our Lookup tool if you have a lot number.)
Storage & Handling	The antibody solution should be stored undiluted between 2°C and 8°C, and protected from prolonged exposure to light. Do not freeze.
Application	FC - Quality tested
Recommended Usage	Each lot of this antibody is quality control tested by immunofluorescent staining with flow cytometric analysis . For flow cytometric staining, the suggested use of this reagent is 5 µl per million cells in 100 µl staining volume or 5 µl per 100 µl of whole blood.
Excitation Laser	Blue Laser (488 nm) Green Laser (532 nm)/Yellow-Green Laser (561 nm)
Application Notes	Additional reported applications include: block interaction of CD96 with PVR and functional assay
Application References	1. Fuchs A, et al. 2004. J. Immunol. 172:3994 2. Manes TD, et al. 2011. J. Immunol. 186:1763. PubMed
(PubMed link indicates BioLegend citation)	

Product Citations

1. Pahl JHW, et al. 2018. Cancer Immunol Res. 0.609027778. PubMed

RRID

AB_2291404 (BioLegend Cat. No. 338405)
AB_2275880 (BioLegend Cat. No. 338406)

Antigen Details

Structure	160 kD, type I transmembrane protein, Ig superfamily
Distribution	NK cells, T cells (upregulated upon activation)
Ligand/Receptor	CD155 (PVR)
Cell Type	NK cells, T cells

Biology Area	Immunology, Innate Immunity, Inhibitory Molecules
Molecular Family	Adhesion Molecules, CD Molecules
Antigen References	<ol style="list-style-type: none"> 1. Zola H, et al. 2007. Leukocyte and Stromal Cell Molecules: The CD Markers. A John Wiley & Sons Inc, Publication 2. Hosen N, et al. 2007. Proc. Natl. Acad. Sci. USA 104:11008 3. Gong J, et al. 2008. Clin. Exp. Immunol.
Gene ID	10225

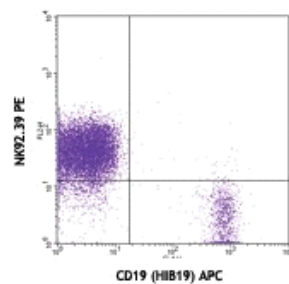
Related Protocols

[Cell Surface Flow Cytometry Staining Protocol](#)

Other Formats

Purified anti-human CD96 (TACTILE), APC anti-human CD96 (TACTILE), PerCP/Cyanine5.5 anti-human CD96 (TACTILE), PE/Dazzle™ 594 anti-human CD96 (TACTILE), Brilliant Violet 421™ anti-human CD96 (TACTILE), PE/Cyanine7 anti-human CD96 (TACTILE), TotalSeq™-A0175 anti-human CD96 (TACTILE), TotalSeq™-C0175 anti-human CD96 (TACTILE), Ultra-LEAF™ Purified anti-human CD96 (TACTILE), TotalSeq™-B0175 anti-human CD96 (TACTILE)

Product Data



Human peripheral blood lymphocytes stained with CD19 (H1B19) APC and NK92.39 PE

For research use only. Not for diagnostic use. Not for resale. BioLegend will not be held responsible for patent infringement or other violations that may occur with the use of our products.

*These products may be covered by one or more Limited Use Label Licenses (see the BioLegend Catalog or our website, www.biolegend.com/ordering#license). BioLegend products may not be transferred to third parties, resold, modified for resale, or used to manufacture commercial products, reverse engineer functionally similar materials, or to provide a service to third parties without written approval of BioLegend. By use of these products you accept the terms and conditions of all applicable Limited Use Label Licenses. Unless otherwise indicated, these products are for research use only and are not intended for human or animal diagnostic, therapeutic or commercial use.

8999 BioLegend Way, San Diego, CA 92121 www.biolegend.com
Toll-Free Phone: 1-877-Bio-Legend (246-5343) Phone: (858) 768-5800 Fax: (877) 455-9587