

# EasySep™ Human Monocyte Enrichment Kit

For processing 1 x 10<sup>9</sup> cells

Catalog #19059

Negative Selection

Document #1000000856 | Version 01



Scientists Helping Scientists™ | [WWW.STEMCELL.COM](http://WWW.STEMCELL.COM)

TOLL FREE PHONE 1 800 667 0322 • PHONE +1 604 877 0713

[INFO@STEMCELL.COM](mailto:INFO@STEMCELL.COM) • [TECHSUPPORT@STEMCELL.COM](mailto:TECHSUPPORT@STEMCELL.COM)

FOR GLOBAL CONTACT DETAILS VISIT OUR WEBSITE

## Description

Isolate untouched and highly purified (CD14+CD16-) monocytes from fresh or previously frozen human peripheral blood mononuclear cells (PBMCs) or lysed leukapheresis samples by immunomagnetic negative selection.

- Fast, easy-to-use and column-free
- Up to 95% purity
- Untouched, viable cells

This kit targets non-monocytes for removal with antibodies recognizing specific cell surface markers including CD16. Unwanted cells are labeled with antibodies and magnetic particles, and separated without columns using an EasySep™ magnet. Desired cells are simply poured off into a new tube. Isolated cells are immediately available for downstream applications such as flow cytometry, culture, or DNA/RNA extraction.

If CD16+ cells are desired, use the EasySep™ Human Monocyte Enrichment Kit without CD16 Depletion (Catalog #19058).

## Component Descriptions

COMPONENT NAME	COMPONENT #	QUANTITY	STORAGE	SHELF LIFE	FORMAT
EasySep™ Human Monocyte Enrichment Cocktail	19059C.2	1 x 1 mL	Store at 2 - 8°C. Do not freeze.	Stable until expiry date (EXP) on label.	A combination of monoclonal antibodies in PBS. Includes an Fc receptor blocking antibody.
EasySep™ D Magnetic Particles for Human Monocytes	19550	1 x 1 mL	Store at 2 - 8°C. Do not freeze.	Stable until expiry date (EXP) on label.	A suspension of magnetic particles in TBS.

PBS - phosphate-buffered saline; TBS - TRIS-buffered saline

Components may be shipped at room temperature (15 - 25°C) but should be stored as indicated above.

## Sample Preparation

For available fresh and frozen samples, see [www.stemcell.com/primarycells](http://www.stemcell.com/primarycells).

### PERIPHERAL BLOOD

Prepare a PBMC suspension from whole blood by centrifugation over a density gradient medium (e.g. Lymphoprep™, Catalog #07801). For more rapid PBMC preparation, use the SepMate™ RUO (Catalog #86450/86415) or SepMate™ IVD\* (Catalog #85450/85415) cell isolation tube.

If using previously frozen PBMCs, incubate the cells with DNase I Solution (Catalog #07900) at a concentration of 100 µg/mL at room temperature (15 - 25°C) for at least 15 minutes prior to labeling and separation. Filter aggregated suspensions through a 37 µm cell strainer (Catalog #27250) for optimal results.

After preparation, resuspend cells at 5 x 10<sup>7</sup> cells/mL in recommended medium.

\* SepMate™ IVD is only available in select regions where it is registered as an In Vitro Diagnostic (IVD) device for the isolation of mononuclear cells (MNCs) from whole blood or bone marrow by density gradient centrifugation. In all other regions SepMate™ is available for research use only (RUO).

### LEUKAPHERESIS

1. Add an equal volume of Ammonium Chloride Solution (Catalog #07800) to the leukapheresis sample.  
NOTE: If working with large volumes (> 150 mL), concentrate leukapheresis sample first by centrifuging at 500 x g for 10 minutes. Remove the supernatant and resuspend the cells in 1/10th of the original leukapheresis volume with recommended medium (e.g. for 300 mL of cells, resuspend in 30 mL of recommended medium). For small volumes (≤ 150 mL), add Ammonium Chloride Solution directly to the leukapheresis sample.
2. Incubate on ice for 15 minutes.
3. Centrifuge at 500 x g for 10 minutes at room temperature (15 - 25°C). Remove the supernatant.
4. Wash the cells by topping up the tube with recommended medium. Centrifuge the cells at 150 x g for 10 minutes at room temperature with the brake off. Carefully remove the supernatant.
5. Repeat step 4 one or more times until most of the platelets have been removed (indicated by a clear supernatant).
6. Resuspend the cells at 5 x 10<sup>7</sup> cells/mL in recommended medium.



## Recommended Medium

EasySep™ Buffer (Catalog #20144), RoboSep™ Buffer (Catalog #20104), or PBS containing 2% fetal bovine serum (FBS) with 1 mM EDTA. Medium should be free of Ca<sup>++</sup> and Mg<sup>++</sup>. For optimal performance, store recommended medium at 2 - 8°C prior to use.

## Directions for Use – Manual EasySep™ Protocols

See page 1 for Sample Preparation and Recommended Medium. Refer to Tables 1, 2, and 3 for detailed instructions regarding the EasySep™ procedure for each magnet.



**Table 1. EasySep™ Human Monocyte Enrichment Kit Protocol**

		EASYSEP™ MAGNETS	
STEP	INSTRUCTIONS	 EasySep™ (Catalog #18000)	 “The Big Easy” (Catalog #18001)
1	Prepare sample at the indicated cell concentration within the volume range.	5 x 10 <sup>7</sup> cells/mL 0.5 - 2 mL	5 x 10 <sup>7</sup> cells/mL 0.5 - 8.5 mL
	Add sample to required tube.	5 mL (12 x 75 mm) polystyrene round-bottom tube (e.g. Catalog #38007)	14 mL (17 x 95 mm) polystyrene round-bottom tube (e.g. Catalog #38008)
2	Add Enrichment Cocktail to sample.	50 µL/mL of sample	50 µL/mL of sample
	Mix and incubate.	2 - 8°C for 10 minutes	2 - 8°C for 10 minutes
3	Vortex Magnetic Particles. NOTE: Particles should appear evenly dispersed.	30 seconds	30 seconds
4	Add Magnetic Particles to sample.	50 µL/mL of sample	50 µL/mL of sample
	Mix and incubate.	2 - 8°C for 5 minutes	2 - 8°C for 5 minutes
5	Add recommended medium to top up the sample to the indicated volume. Mix by gently pipetting up and down 2 - 3 times.	Top up to 2.5 mL	<ul style="list-style-type: none"> <li>• Top up to 5 mL for samples &lt; 2 mL</li> <li>• Top up to 10 mL for samples ≥ 2 mL</li> </ul>
	Place the tube (without lid) into the magnet and incubate.	RT for 2.5 minutes	RT for 2.5 minutes
6	Pick up the magnet, and in one continuous motion invert the magnet and tube,* pouring the enriched cell suspension into a new tube.	Use a new 5 mL tube Isolated cells are ready for use	Use a new 14 mL tube Isolated cells are ready for use
OPTIONAL ADDITIONAL SEPARATIONS to improve purity or recovery are listed on the following page.			

RT - room temperature (15 - 25°C)

\* Leave the magnet and tube inverted for 2 - 3 seconds, then return upright. Do not shake or blot off any drops that may remain hanging from the mouth of the tube.



Table 2. EasySep™ Human Monocyte Enrichment Kit Protocol

		EASYSEP™ MAGNETS	
STEP	INSTRUCTIONS	 EasySep™ (Catalog #18000)	 “The Big Easy” (Catalog #18001)
OPTIONAL ADDITIONAL SEPARATION for PURITY NOTE: This will improve purity but may reduce recovery.		---	---
7	Remove the tube from the magnet and place the new tube (without lid) into the magnet and incubate for a second separation.	RT for 2.5 minutes	RT for 2.5 minutes
8	Pick up the magnet, and in one continuous motion invert the magnet and tube,* pouring the enriched cell suspension into a new tube.	Isolated cells are ready for use	Isolated cells are ready for use
OPTIONAL ADDITIONAL SEPARATION for RECOVERY NOTE: This will improve recovery but may reduce purity.		---	---
7	Remove the tube from the magnet and add recommended medium to indicated volume. Mix by gently pipetting up and down 5 - 6 times.	Top up to 2.5 mL	<ul style="list-style-type: none"> <li>• Top up to 5 mL for samples &lt; 2 mL</li> <li>• Top up to 10 mL for samples ≥ 2 mL</li> </ul>
8	Place the tube (without lid) into the magnet and incubate.	RT for 2.5 minutes	RT for 2.5 minutes
9	Pick up the magnet, and in one continuous motion invert the magnet and tube,* pouring off the enriched cell suspension.	Use a new 14 mL tube Combine with poured-off fraction from step 6 Isolated cells are ready for use	<ul style="list-style-type: none"> <li>• Use a new 14 mL tube for start samples &lt; 2 mL</li> <li>• Use a new 50 mL tube for start samples ≥ 2 mL</li> </ul> Combine with poured-off fraction from step 6 Isolated cells are ready for use

RT - room temperature (15 - 25°C)

\* Leave the magnet and tube inverted for 2 - 3 seconds, then return upright. Do not shake or blot off any drops that may remain hanging from the mouth of the tube.

Table 3. EasySep™ Human Monocyte Enrichment Kit Protocol

		EASYSEP™ MAGNETS	
STEP	INSTRUCTIONS	 EasyPlate™ (Catalog #18102)	 Easy 50 (Catalog #18002)
1	Prepare sample at the indicated cell concentration within the volume range.	5 x 10 <sup>7</sup> cells/mL 0.05 - 0.2 mL	5 x 10 <sup>7</sup> cells/mL 1 - 40 mL
	Add sample to required tube (or plate when using the EasyPlate™ EasySep™ Magnet).	Round-bottom, non-tissue culture-treated 96-well plate (e.g. Catalog #38018)	50 mL (30 x 115 mm) conical tube (e.g. Catalog #38010)
2	Add Enrichment Cocktail to sample.	50 µL/mL of sample	50 µL/mL of sample
	Mix and incubate.	2 - 8°C for 10 minutes	2 - 8°C for 10 minutes
3	Vortex Magnetic Particles. NOTE: Particles should appear evenly dispersed.	30 seconds	30 seconds
4	Add Magnetic Particles to sample.	50 µL/mL of sample	50 µL/mL of sample
	Mix and incubate.	2 - 8°C for 5 minutes	2 - 8°C for 10 minutes
5	Add recommended medium to top up sample to the indicated volume. Mix by gently pipetting up and down 2 - 3 times.	Top up to 0.25 mL	<ul style="list-style-type: none"> <li>• Top up to 25 mL for samples ≤ 10 mL</li> <li>• Top up to 50 mL for samples &gt; 10 mL</li> </ul>
	Place the tube or plate (without lid) into the magnet and incubate.	RT for 10 minutes	RT for 10 minutes
6	Carefully pipette** (do not pour) the enriched cell suspension into a new tube or plate.	Isolated cells are ready for use	Isolated cells are ready for use

RT - room temperature (15 - 25°C)

\*\* Collect the entire supernatant, all at once, into a single pipette.

## Directions for Use – Fully Automated RoboSep™ Protocol

See page 1 for Sample Preparation and Recommended Medium. Refer to Table 4 for detailed instructions regarding the RoboSep™ procedure.

**Table 4. RoboSep™ Human Monocyte Enrichment Kit Protocol**

STEP	INSTRUCTIONS	RoboSep™ (Catalog #20000 and #21000)
1	Prepare sample at the indicated cell concentration within the volume range.	5 x 10 <sup>7</sup> cells/mL 0.5 - 8.5 mL
	Add sample to required tube.	14 mL (17 x 95 mm) polystyrene round-bottom tube (e.g. Catalog #38008)
2	Select protocol.	Human Monocyte Negative Selection 19059-high recovery
3	Vortex Magnetic Particles. NOTE: Particles should appear evenly dispersed.	30 seconds
4	Load the carousel.	Follow on-screen prompts
	Start the protocol.	Press the green "Run" button
5	Unload the carousel when the run is complete.	Isolated cells are ready for use

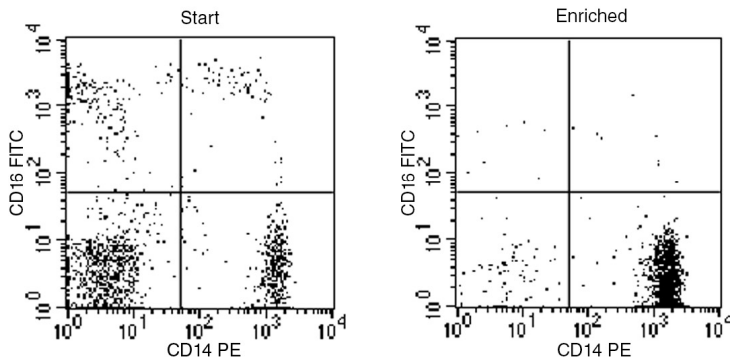
## Notes and Tips

### ASSESSING PURITY

For purity assessment of monocytes (CD14+CD16-) by flow cytometry, use the following fluorochrome-conjugated antibodies:

- Anti-Human CD14 Antibody, Clone M5E2 (Catalog #60004)
- Anti-Human CD16 Antibody, Clone 3G8 (Catalog #60041; optional)

## Data



Starting with previously frozen PBMCs, the monocyte content (CD14+CD16-) of the enriched fraction typically ranges from 83 - 95%. In the above example, the purities of the start and final enriched fractions are 14% and 94%, respectively.

PRODUCTS ARE FOR RESEARCH USE ONLY AND NOT INTENDED FOR HUMAN OR ANIMAL DIAGNOSTIC OR THERAPEUTIC USES UNLESS OTHERWISE STATED. FOR ADDITIONAL INFORMATION ON QUALITY AT STEMCELL, REFER TO [WWW.STEMCELL.COM/COMPLIANCE](http://WWW.STEMCELL.COM/COMPLIANCE).

Copyright © 2020 by STEMCELL Technologies Inc. All rights reserved including graphics and images. STEMCELL Technologies & Design, STEMCELL Shield Design, Scientists Helping Scientists, EasyPlate, EasySep, RoboSep, and SepMate are trademarks of STEMCELL Technologies Inc. Lymphoprep is a trademark of Alere Technologies. All other trademarks are the property of their respective holders. While STEMCELL has made all reasonable efforts to ensure that the information provided by STEMCELL and its suppliers is correct, it makes no warranties or representations as to the accuracy or completeness of such information.