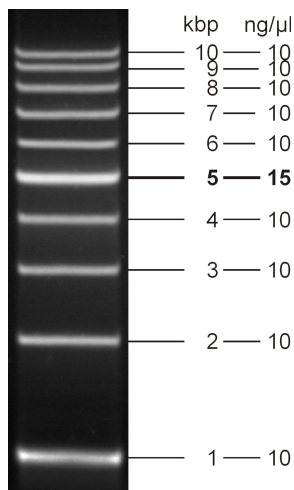




## Fluorescent 1 kb DNA Ladder

1 kb to 10 kb log scale  
ready-to-use, blue / blue, green fluorescent

Cat. No.	Amount
M-237S	500 µl (105 ng/µl)
M-237L	5 x 500 µl (105 ng/µl)



5 µl loaded onto 0.6 % agarose

**For *in vitro* use only!**

**Shipping:** shipped on gel packs

**Storage Conditions:** store at -20 °C

**Additional Storage Conditions:** store dark

Short term storage (up to 1 month) at 4 °C possible.

**Shelf Life:** 12 months

**Form:** liquid, DNA fragment mix in 10 mM Tris-HCl pH 7.5, 10 mM EDTA, 10 % (w/v) Glycerol, SYBR® Green, Bromophenol Blue and Xylene Cyanol FF

**Color:** blue

**Concentration:** 105 ng/µl

### Description:

Fluorescent 1 kb DNA Ladder consist of 10 DNA fragments ranging from 1 kb to 10 kb. The prestained ladder is supplied in ready-to-use format containing SYBR® Green fluorescent DNA stain and blue tracking dyes. It allows sizing and concentration estimate of DNA fragments on agarose gels generated by PCR or restriction digest. DNA log scale ladders are well suited for combination if small and large fragments should be analyzed on one gel.

### Fluorescent DNA Stain:

DNA Ladders with Fluorescent Stain contain SYBR® Green a fluorescent DNA intercalator dye specially developed for DNA analysis applications. High quantum yield and excellent stability makes SYBR® Green the ideal fluorophore for DNA staining applications and a superior replacement for Ethidium Bromide.

DNA Ladders with Fluorescent Stain are optimized for direct loading into unstained agarose gels and are recommended for use in combination with Gel Loading Buffer with DNA Stain (#PCR-274 - #PCR-276).

The ladders provide highest convenience during routine handling and avoid commonly used gel stains like Ethidium Bromide.

### Recommended Load:

5 µl per lane

### DNA Fragments:

1, 2, 3, 4, 5, 6, 7, 8, 9, 10 kb