

Prestained Dual Color Protein Molecular Weight Marker (1.7-40 kDa)

Catalog #: MBS355494

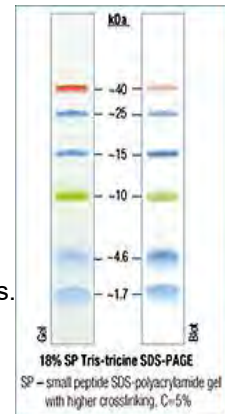
Size: 50 µl

Lot # Check on the product label

Storage: Store at 4°C for 3 months, and at -20°C for long term.

Application

- Monitoring of protein migration during SDS-polyacrylamide gel electrophoresis.
- Verifying Western transfer efficiency.
- Approximate sizing of proteins on SDS-PAGE and Western blots.



Introductions

Prestained protein ladders / marker is designed for monitoring protein separation during SDS-polyacrylamide gel electrophoresis, verifying of Western transfer efficiency on PVDF, nylon and nitrocellulose membranes and approximate sizing of proteins. It is composed of prestained recombinant prokaryotic proteins. Prestained Protein Molecular Weight Marker is a three-color molecular weight standard, contains 6 prestained natural proteins with molecular weights from 1.7 kDa to 40 kDa.

Storage buffer

Each vial contains 62.5 mM Tris-H₃PO₄ (pH 7.5 at 25°C), 1 mM EDTA, 2% SDS, 10 mM DTT, 1 mM NaN₃ and 33% glycerol.

Protocol

1. Thaw the ladder either at room temperature or at 37°C for a few minutes to dissolve precipitated solids thoroughly. **Do not boil!**
2. Mix gently, but thoroughly, to ensure that the solution is homogeneous.
3. Load the following volumes of the ladder on
 - Min SDS-polyacrylamide gel: 5 µl per well, with a thickness of 0.75-1.0 mm
 - Large SDS-polyacrylamide gel: 10 µl per well, with a thickness of 0.75-1.0 mm