



PRODUCT DATA SHEET

Prestained Protein Ladder (3.5 - 245 kDa)

ENZ-ACC131

Protein ladder for use with protein gel electrophoresis

Product Number/Sizes

ENZ-ACC131-0500 500 µl

- 3 µL or 5 µL per loading for clear visualization during electrophoresis on 15-well or 10-well mini-gel, respectively.
- Three color protein standard with 13 prestained proteins.
- Apply more for thicker (>1.5 mm) or larger gel.

Enzo s Protein ladder is a three-color protein standard with 13 prestained proteins, covering a wide range molecular weights from 3.5 to 245 kDa. Proteins are covalently coupled with a blue chromophore except for two reference bands (one green and one red band at 25 kDa and 75 kDa respectively) when separated on SDS-PAGE (Tris-glycine buffer).

Our Protein ladder is designed for monitoring protein separation during SDS-polyacrylamide gel electrophoresis, verification of Western transfer efficiency on membranes (PVDF, nylon, or nitrocellulose) and for approximating the size of proteins. The ladder is supplied in gel loading buffer and is ready to use. Do not heat, dilute or add reducing agent before loading.

Product Details

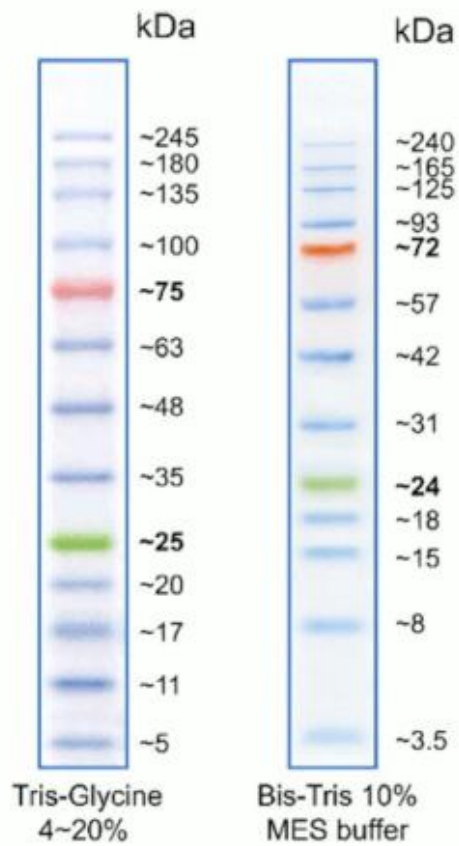
FORMULATION:	Approximately 0.1–0.4 mg/ml of each protein in the buffer (20mM Tris-phosphate, pH 7.5 at 25°C), 2% SDS, 0.2mM Dithiothreitol, 3.6 M Urea, and 15% (v/v) Glycerol).
APPLICATIONS:	SDS-PAGE
SHIPPING:	Shipped on Blue Ice
SHORT TERM STORAGE:	+4°C
LONG TERM STORAGE:	-20°C
USE/STABILITY:	Store at 4°C for 3 months. Store at -20°C for 24 months.
REGULATORY STATUS:	RUO - Research Use Only

GLOBAL HEADQUARTERS

Enzo Life Sciences, Inc.
10 Executive Blvd
Farmingdale, NY 11735
USA
T 1-800-942-0430
T 1-631-694-7070
F 1-610-941-9252
E info-usa@enzolifesciences.com
www.enzolifesciences.com

EUROPE/ASIA

Enzo Life Sciences (ELS) AG
Industriestrasse 17, Postfach
CH-4415 Lausen
Switzerland
T +41/061 926 89 89
T +41/061 926 89 79
E info-ch@enzolifesciences.com
www.enzolifesciences.com



Guide for Molecular Weight Estimation (kDa): Migration patterns of Prestained Protein Ladder in different electrophoresis conditions.

Revised 04-Jan-22

GLOBAL HEADQUARTERS

Enzo Life Sciences, Inc.
 10 Executive Blvd
 Farmingdale, NY 11735
 USA
 T 1-800-942-0430
 T 1-631-694-7070
 F 1-610-941-9252
 E info-usa@enzolifesciences.com
 www.enzolifesciences.com

EUROPE/ASIA

Enzo Life Sciences (ELS) AG
 Industriestrasse 17, Postfach
 CH-4415 Lausen
 Switzerland
 T +41/061 926 89 89
 F +41/061 926 89 79
 E info-ch@enzolifesciences.com
 www.enzolifesciences.com