

Store at -20°C. Stable for at least 50 freeze-thaw cycles. It is also stable at 4°C for 30 days.

Volume:

250 µl (for 250 App.) for validation purpose.

Description:

This marker consists of 8 fragments, and ready to use: 500bp, 1000bp, 2000bp, **3000bp**, 4000bp, 5000bp, 6000bp, 8000bp.

The approximate mass of DNA in each of the bands is ~10ng/µl, except the 3000 base pair band has increased intensity (30ng/µl) to serve as reference points. They are all double-stranded DNA fragments.

10X Gel Loading Dye, Blue:

50% Glycerol

100 mM EDTA

33 mM Tris-HCl (pH 8.0 at 25°C)

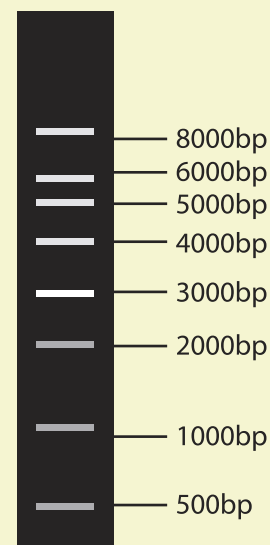
0.15% bromophenol blue

Usage notes:

We recommend loading **5µl** of 1 kb DNA Ladder for each lane.

Add 1/10 volume of 10X Loading Buffer with DNA solution to apply on agarose gel electrophoresis. In case precipitates generated during the storage at room temperature, dissolve in warm bath before use.

This ladder was not designed for precise quantification of DNA mass but can be used for approximating the mass of DNA in comparably intense samples of similar size.



1 kb DNA Ladder visualized by ethidium bromide staining on a 0.7% TAE agarose gel.

Product Use Limitations:

This product is developed, designed and sold exclusively for research purposes and in vitro use only.