

Technical Data Sheet

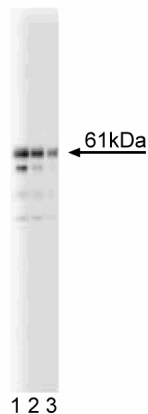
Purified Mouse Anti-Beclin**Product Information**

Material Number:	612112
Size:	50 µg
Concentration:	250 µg/ml
Clone:	20/Beclin
Immunogen:	Human Beclin aa. 171-291
Isotype:	Mouse IgG2a
Reactivity:	QC Testing: Human Tested in Development: Mouse, Rat, Dog, Chicken
Target MW:	61 kDa
Storage Buffer:	Aqueous buffered solution containing BSA, glycerol, and ≤0.09% sodium azide.

Description

Autophagy is the bulk degradation of cellular proteins through the autophagosomic-lysosomal pathway. This process is important for normal cell growth, and may be disrupted in tumor cells. Beclin is a Bcl-2 binding protein that is homologous to the yeast autophagy gene, *apg6/vps30*. The structure of beclin includes a Bcl-2 binding coiled-coil region, and a leucine-rich nuclear export signal (NES). Beclin protein colocalizes with intracytoplasmic organelles and nuclei in normal COS7 and MCF7 cells. However, inhibition of CRM1-dependent nuclear export leads to beclin localization primarily in the nucleus. Mutation of the NES domain of beclin also prevents nuclear export, as well as suppresses beclin-mediated nutrient deprivation-induced autophagy. In addition, these beclin mutants can not inhibit in vitro clonogenicity and in vivo tumorigenicity of MCF7 cells. Beclin interaction with Bcl-2 may be involved with host viral defense, since overexpression of beclin inhibits Sindbis virus replication and expression of beclin lacking the Bcl-2 binding domain has no antiviral effects. Thus, beclin may be an important component of complexes involved in autophagy.

This antibody is routinely tested by western blot analysis. Other applications were tested at BD Biosciences Pharmingen during antibody development only or reported in the literature.



Western blot analysis of Beclin on a Jurkat lysate. Lane 1: 1:500, lane 2: 1:1000, lane 3: 1:2000 dilution of the anti-Beclin antibody.

Preparation and Storage

The monoclonal antibody was purified from tissue culture supernatant or ascites by affinity chromatography. Store undiluted at -20° C.

BD Biosciences

bdbiosciences.com

United States	Canada	Europe	Japan	Asia Pacific	Latin America/Caribbean
877.232.8995	888.259.0187	32.53.720.550	0120.8555.90	65.6861.0633	55.11.5185.9995

For country-specific contact information, visit bdbiosciences.com/how_to_order/

Conditions: The information disclosed herein is not to be construed as a recommendation to use the above product in violation of any patents. BD Biosciences will not be held responsible for patent infringement or other violations that may occur with the use of our products. Purchase does not include or carry any right to resell or transfer this product either as a stand-alone product or as a component of another product. Any use of this product other than the permitted use without the express written authorization of Becton Dickinson and Company is strictly prohibited.

For Research Use Only. Not for use in diagnostic or therapeutic procedures. Not for resale.

BD, BD Logo and all other trademarks are the property of Becton, Dickinson and Company. ©2006 BD



Application Notes

Application

Western blot	Routinely Tested
Immunofluorescence	Not Recommended

Suggested Companion Products

<u>Catalog Number</u>	<u>Name</u>	<u>Size</u>	<u>Clone</u>
611451	Jurkat Cell Lysate	500 µg	(none)
554002	HRP Goat Anti-Mouse Igs	1.0 ml	(none)

Product Notices

1. Since applications vary, each investigator should titrate the reagent to obtain optimal results.
2. Please refer to www.bdbiosciences.com/pharming/en/protocols for technical protocols.
3. Caution: Sodium azide yields highly toxic hydrazoic acid under acidic conditions. Dilute azide compounds in running water before discarding to avoid accumulation of potentially explosive deposits in plumbing.
4. Source of all serum proteins is from USDA inspected abattoirs located in the United States.

References

- Aita VM, Liang XH, Murty VV, et al. Cloning and genomic organization of beclin 1, a candidate tumor suppressor gene on chromosome 17q21. *Genomics*. 1999; 59(1):59-65.(Biology)
- Liang XH, Jackson S, Seaman M, et al. Induction of autophagy and inhibition of tumorigenesis by beclin 1. *Nature*. 1999; 402(6762):672-676.(Biology)
- Liang XH, Kleeman LK, Jiang HH, et al. Protection against fatal Sindbis virus encephalitis by beclin, a novel Bcl-2-interacting protein. *J Virol*. 1998; 72(11):8586-8596.(Biology)
- Liang XH, Yu J, Brown K, Levine B. Beclin 1 contains a leucine-rich nuclear export signal that is required for its autophagy and tumor suppressor function. *Cancer Res*. 2001; 61(8):3443-3449.(Biology)