

ATG5 antibody [EPR1755(2)]

Cat No. GTX62601

| | |
|-------------|-----------------------|
| Host | Rabbit |
| Clonality | Monoclonal |
| Isotype | IgG |
| Application | WB, ICC/IF, IHC-P, IP |
| Reactivity | Human, Mouse, Rat |

Reference (7)

Package

100µl

APPLICATION

Application Note

*Optimal dilutions/concentrations should be determined by the researcher.

| Suggested dilution | Dilution |
|--------------------|-----------------|
| WB | Assay dependent |
| ICC/IF | Assay dependent |
| IHC-P | Assay dependent |
| IP | Assay dependent |

Not tested in other applications.

Calculated MW 32 kDa. ([Note](#))

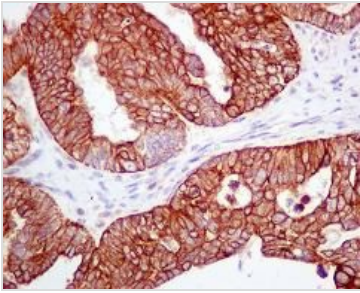
PROPERTIES

| | |
|--------------|--|
| Form | Liquid |
| Buffer | pH: 7.4. Preservative: 0.01% Sodium azide. Constituents: 50% Glycerol, 0.05% BSA |
| Storage | Store as concentrated solution. Centrifuge briefly prior to opening vial. For short-term storage (1-2 weeks), store at 4°C. For long-term storage, aliquot and store at -20°C or below. Avoid multiple freeze-thaw cycles. |
| Immunogen | Synthetic peptide corresponding to residues in Human APG5L/ATG5. |
| Purification | Tissue culture supernatant |
| Conjugation | Unconjugated |
| Note | For laboratory use only. Not for any clinical, therapeutic, or diagnostic use in humans or animals. Not for animal or human consumption. |

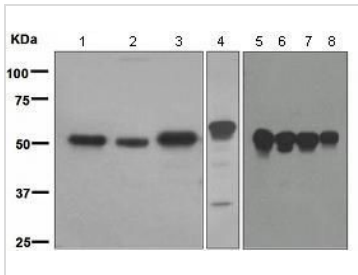


For full product information, images and publications, please visit our [website](#).

DATA IMAGES

**GTx62601 IHC-P Image**

IHC-P analysis of human ovarian adenocarcinoma tissue using Atg5 antibody [EPR1755(2)] at a dilution of 1:100.

**GTx62601 WB Image**

WB analysis of lysates from (1) Raji, (2) HeLa, (3) HT-1080, (4) human fetal kidney, (5) C6, (6) Raw264.7, (7) PC-12 and (8) NIH3T3 (10 µg per lane) using Atg5 antibody [EPR1755(2)] at a dilution of 1:1,000.



For full product information, images and publications, please visit our [website](#).