

---

Product Manual

# Endothelial Tube Formation Assay (In Vitro Angiogenesis)

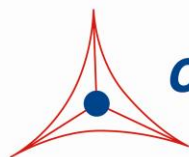
Catalog Number

CBA-200

50 assays

**FOR RESEARCH USE ONLY**  
**Not for use in diagnostic procedures**

---



**CELL BIOLABS, INC.**

*Creating Solutions for Life Science Research*

## **Introduction**

Angiogenesis, or neovascularization, is the process of generating new blood vessels derived as extensions from the existing vasculature. The principal cells involved are endothelial cells, which line all blood vessels and constitute virtually the entirety of capillaries. Angiogenesis involves multiple steps; to achieve new blood vessel formation, endothelial cells must first escape from their stable location by breaking through the basement membrane. Once this is achieved, endothelial cells migrate toward an angiogenic stimulus such as might be released from tumor cells or wound-associated macrophages. In addition, endothelial cells proliferate to provide the necessary number of cells for making a new vessel. Subsequent to this proliferation, the new outgrowth of endothelial cells needs to reorganize into a three-dimensionally tubular structure. Each of these elements, basement membrane disruption, cell migration, cell proliferation, and tube formation, can be a target for intervention, and each can be tested *in vitro* and *in vivo*.

Several *in vivo* assay systems, including the chick chorioallantoic membrane (CAM) assay, an *in vivo* Matrigel plug assay, and the corneal angiogenesis assay, have been developed that permit a more realistic appraisal of the angiogenic response. However, these assays are time consuming, tedious and require technical specialties.

One quick assessment of angiogenesis is the measurement of the ability of endothelial cells to form three-dimensional structures (tube formation). Endothelial cells form tubes on collagen or fibrin clot coated dishes after several days. Cell Biolabs' Endothelial Tube Formation Assay Kit utilizes ECM (extracellular matrix) gel prepared from Engelbreth–Holm–Swarm (EHS) tumor cells. Endothelial tube formation on ECM gel closely mimics the *in vivo* environment and may be used to test angiogenesis inhibitors before *in vivo* testing.

Cell Biolabs' Endothelial Tube Formation Assay Kit provides a robust system to assess angiogenesis *in vitro*. Tube formation can be achieved within 18 hours. Following staining the tube with the provided fluorescence dye, the extent of tube formation, such as average tube length and branch point, can be quantified through imaging software. Each kit provides sufficient quantities to perform up to 50 assays in 96-well plates.

## **Kit Components**

1. ECM Gel Solution (Part No. 10010): Five 0.5 mL tubes, Ready-To-Use
2. 10X Staining Buffer (Part No. 10011): One 1 mL tube
3. Staining Dye (Part No. 10012): One 50  $\mu$ L tube of 1 mM Calcein AM in DMSO

## **Materials Not Supplied**

1. Endothelial cells such as HUVEC, HMEC
2. Endothelial cell culture medium
3. 1XPBS
4. 37°C Incubator, 5% CO<sub>2</sub> atmosphere
5. Light microscope

6. Fluorescence microscope
7. (optional) Tube quantification software

### **Storage**

Store all components at -20°C.

### **Preparation of Reagents**

- ECM gel: Thaw overnight on ice or in a frost-free 4°C refrigerator, store the thawed ECM gel solution up to 10 days, do not refreeze. The ECM gel solution will gel rapidly at room temperature. The tube **MUST** be kept on ice all the time.
- 1X Staining Buffer: Prepare a 1X Staining Buffer by diluting the provided 10X stock 1:10 in dH<sub>2</sub>O. Store the diluted solution at room temperature.
- 1X Staining Solution: **FRESHLY** prepare 1X Staining Buffer by diluting the provided Staining Dye to 1 µM with 1X Staining Buffer. Store 1X Staining Solution at room temperature.

### **Assay Protocol**

#### **I. Tube Formation**

1. Thaw ECM gel and prepare 1X Staining Buffer as described above.
2. Add 50 µL of thawed ECM gel solution to each well of a pre-chilled 96-well sterile plate.  
*Note: Undiluted ECM gel solution is very viscous and quickly gels at room temperature, so it **MUST** be kept on ice all the time. When pipetting, use a pre-chilled pipette tip to prevent any ECM gel formation during transfer.*
3. Incubate 30 minutes to 1 hr at 37°C to allow the ECM solution to form a gel.
4. Harvest endothelial cells and resuspend in desired culture medium containing 0.5-10% serum and your desired angiogenesis mediators at 1-2 x 10<sup>5</sup> cells/mL.
5. Add 150 µL of cell suspension (1.5-3 x 10<sup>4</sup> cells) per well onto the solidified ECM gel. Incubate the assay plate at 37°C for 4 to 18 hrs.
6. Examine the endothelial tubes using light microscope in high magnification field. It is possible to visually estimate the extent of tube formation by inspecting the overall tube length and branch points.

#### **II. Fluorescence Labeling**

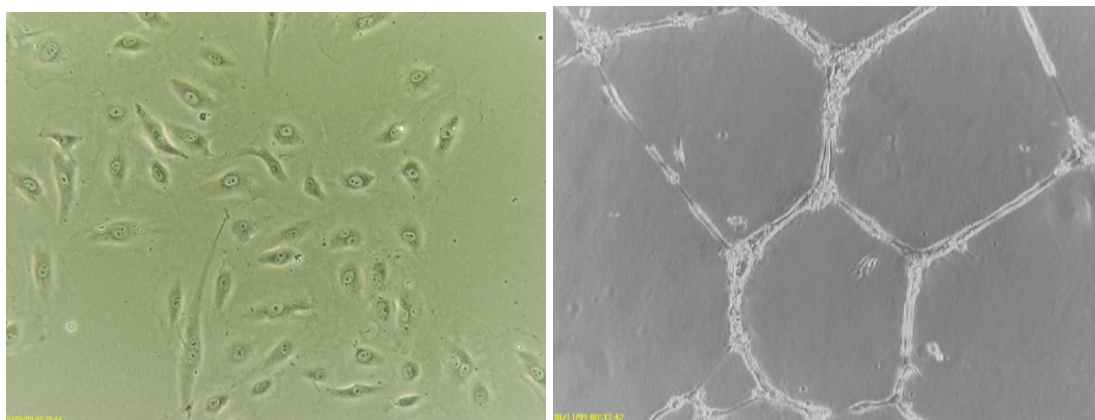
1. Carefully remove medium by gently blotting on paper towels. Be carefully not to disturb endothelial tubes.
2. Gently wash with 100 µL of 1X Staining Buffer and remove the wash as described in step 1.
3. Add 50 µL of 1X Staining Solution per well and incubate 30 min at 37°C.
4. Gently wash with 100 µL of 1X PBS and remove the wash as described in step 1. Repeat this step twice.

5. Examine endothelial cells and tubes using a fluorescence microscope. Acquire several images per well and process them using imaging analysis software such as NIH Image or Image Pro Plus.

*Note: Calcein AM-labeled tubular structure is stable for only 1-2 hrs in 1X PBS at 4°C*

### **Example of Results**

The following figures demonstrate tube forming results with HUVEC cells using the Endothelial Tube Formation Assay. One should use the data below for reference only. This data should not be used to interpret actual results.



**Figure 1. HUVEC Tube Formation on ECM Gel. Left:** HUVEC cells on tissue culture plate. **Right:** Tube formation on ECM Gel.

### **References**

1. Grant DS, Kleinman HK, Leblond CP, Inoue S, Chung AE, Martin GR (1985) *Am J Anat* 174:387-398.
2. Jain RK, Schlenger K, Höckel M, Yuan F (1997) *Nat Med* 3:1203-1208.
3. Auerbach R, Auerbach W, Polakowski I (1991) *Pharmacol Ther* 51:1-11.
4. Auerbach R, Akhtar N, Lewis RL, Shinnars BL (2000) *Cancer Metastasis Rev* 19:167-172.
5. Madri JA, Pratt BM, Tucker AM (1988) *J Cell Biol* 106:1375-1384.

### **Recent Product Citations**

1. Suda, M., et al. (2017). Inhibition of dipeptidyl peptidase-4 ameliorates cardiac ischemia and systolic dysfunction by up-regulating the FGF-2/EGR-1 pathway. *PLoS One*. **12**(8):e0182422. doi: 10.1371/journal.pone.0182422. eCollection 2017.
2. Bae, W.J. et al. (2017). Lysyl oxidase-mediated VEGF-induced differentiation and angiogenesis in human dental pulp cells. *Int. Endod. J.* doi:10.1111/iej.12796.

3. Katagiri, W. et al. (2017). A defined mix of cytokines mimics conditioned medium from cultures of bone marrow-derived mesenchymal stem cells and elicits bone regeneration. *Cell Prolif.* doi: 10.1111/cpr.12333.
4. Kim, J.Y. et al. (2017). Role of Protein Phosphatase 1 in Angiogenesis and Odontoblastic Differentiation of Human Dental Pulp Cells. *J Endod.* **43**(3):417-424. doi: 10.1016/j.joen.2016.10.013.
5. Sakaguchi, K. et al. (2017). Periodontal tissue regeneration using the cytokine cocktail mimicking secretomes in the conditioned media from human mesenchymal stem cells. *Biochem Biophys Res Commun.* **484**(1):100-106. doi: 10.1016/j.bbrc.2017.01.065.
6. Lee, S.I. et al. (2016). Baicalein promotes angiogenesis and odontoblastic differentiation via the BMP and Wnt pathways in human dental pulp cells. *Am. J. Chinese Med.* **44**:1457.
7. Yun, H.M. et al. (2016). Magnetic nanofiber scaffold-induced stimulation of odontogenesis and pro-angiogenesis of human dental pulp cells through Wnt/MAPK/NF- $\kappa$ B pathways. *Dent Mater.* doi:10.1016/j.dental.2016.06.016.
8. Qiu, D. et al. (2016). Overexpression of FoxP1 is a novel biomarker of malignant human pancreatic cancer. *Int J Clin Exp Med.* **9**:9054-9063.
9. Pekoz, G. G. et al. (2016). Influence of co-culture on osteogenesis and angiogenesis of bone marrow mesenchymal stem cells and aortic endothelial cells. *Microvasc Res.* doi:10.1016/j.mvr.2016.06.005.
10. Sun, Y. et al. (2016). Toll-like receptor 4 promotes angiogenesis in pancreatic cancer via PI3K/AKT signaling. *Exp Cell Res.* doi:10.1016/j.yexcr.2016.07.009.
11. Bid, H. K. et al. (2016). The Bromodomain BET inhibitor JQ1 suppresses tumor angiogenesis in models of childhood sarcoma. *Mol Cancer Ther.* doi:10.1158/1535-7163.
12. Chang, S. W. et al. (2016). Combined effects of mineral trioxide aggregate and human placental extract on rat pulp tissue and growth, differentiation and angiogenesis in human dental pulp cells. *Acta Odontol Scand.* doi:10.3109/00016357.2015.1120882.
13. Yun, H. M. et al. (2016). Magnetic nanocomposite scaffolds combined with static magnetic field in the stimulation of osteoblastic differentiation and bone formation. *Biomaterials.* **85**:88-98.
14. Sun, T. et al. (2016). Forkhead box protein k1 recruits TET1 to act as a tumor suppressor and is associated with MRI detection. *Jpn J Clin Oncol.* doi:10.1093/jjco/hyv185.
15. Al-Mahrouki, A. A. et al. (2015). Ultrasound-stimulated microbubble enhancement of radiation treatments: endothelial cell function and mechanism. *Oncoscience.* **2**:944-957.
16. Chang, S. W. et al. (2015). Odontoblastic differentiation, inflammatory response, and angiogenic potential of 4 calcium silicate-based cements: MicroMega MTA, ProRoot MTA, Retro MTA, and experimental calcium silicate cement. *J Endod.* doi: 10.1016/j.joen.2015.04.018.
17. Zheng, D. et al. (2015). Silencing of miR-195 reduces diabetic cardiomyopathy in C57BL/6 mice. *Diabetologia.* doi: 10.1007/s00125-015-3622-8.
18. Yamanegi, K. et al. (2015). Sodium valproate, a histone deacetylase inhibitor, modulates the vascular endothelial growth inhibitor-mediated cell death in human osteosarcoma and vascular endothelial cells. *Int J Oncol.* doi: 10.3892/ijo.2015.2924.
19. Bae, W. J. et al. (2015). Effects of sodium tri- and hexametaphosphate on proliferation, differentiation, and angiogenic potential of human dental pulp cells. *J Endod.* doi: 10.1016/j.joen.2015.01.038.
20. Zhang, J. et al. (2015). Effects of bioactive cements incorporating zinc-bioglass nanoparticles on odontogenic and angiogenic potential of human dental pulp cells. *J Biomater Appl.* **29**:954-964.

21. Pessôa, B. S. et al. (2015). Effect of a stable angiotensin-(1–7) analogue on progenitor cell recruitment and cardiovascular function post myocardial infarction. *J Am Heart Assoc.* doi: 10.1161/JAHA.114.001510.
22. Hutzen, B. et al. (2014). Treatment of medulloblastoma with oncolytic measles viruses expressing the angiogenesis inhibitors endostatin and angiostatin. *BMC Cancer.* **14**:206.
23. El Kaffas, A. et al. (2014). Sunitinib effects on the radiation response of endothelial and breast tumor cells. *Microvasc Res.* **92**:1-9.
24. Lee, S. J. et al. (2014). Statins, 3-hydroxy-3-methylglutaryl Coenzyme A reductase inhibitors, potentiate the anti-angiogenic effects of bevacizumab by suppressing angiopoietin2, BiP, and Hsp90 $\alpha$  in human colorectal cancer *Br J Cancer.* **111**:497-505.
25. Shin, M.R. et al. (2014). TNF- $\alpha$  and LPS activate angiogenesis via VEGF and SIRT1 signaling in human dental pulp cells. *Int Endod J.* 10.1111/iej.12396.
26. Edwards, A.K. et al. (2014). A peptide inhibitor of synuclein- $\gamma$  reduces neovascularization of human endometriotic lesions. *Mol Hum Reprod.* **20**:1002-1008.
27. Cai, X. et al. (2013). Serum amyloid A stimulates cultured endothelial cells to migrate and proliferate: inhibition by the multikinase inhibitor BIBF1120. *Clin Exp Pharmacol Physiol.* **40**:662-670.
28. Yu, J.G. et al. (2013). Baroreflex deficiency hampers angiogenesis after myocardial infarction via acetylcholine- $\alpha$ 7-nicotinic ACh receptor in rats. *Eur. Heart J.* **34**:2412-2420.
29. Bid, H. et al. (2013). Dual targeting of the Type 1 Insulin-like Growth Factor Receptor and its ligands as an effective antiangiogenic strategy. *Clin. Cancer Res.* **19**: 2984-2994.
30. Cai, C. et al. (2012). SIVmac239-Nef down-regulates cell surface expression of CXCR4 in tumor cells and inhibits proliferation, migration and angiogenesis. *Anticancer Res.* **23**:2759-2768.
31. Bid, H. et al. (2012). Potent inhibition of angiogenesis by the IGF-1 receptor-targeting antibody SCH717454 is reversed by IGF-2. *Mol. Cancer Ther.* **11**: 649-659.

Please see the complete list of product citations: <http://www.cellbiolabs.com/angiogenesis-assay>.

## **Warranty**

These products are warranted to perform as described in their labeling and in Cell Biolabs literature when used in accordance with their instructions. THERE ARE NO WARRANTIES THAT EXTEND BEYOND THIS EXPRESSED WARRANTY AND CELL BIOLABS DISCLAIMS ANY IMPLIED WARRANTY OF MERCHANTABILITY OR WARRANTY OF FITNESS FOR PARTICULAR PURPOSE. CELL BIOLABS' sole obligation and purchaser's exclusive remedy for breach of this warranty shall be, at the option of CELL BIOLABS, to repair or replace the products. In no event shall CELL BIOLABS be liable for any proximate, incidental or consequential damages in connection with the products.

## **Contact Information**

Cell Biolabs, Inc.  
 7758 Arjons Drive  
 San Diego, CA 92126  
 Worldwide: +1 858-271-6500  
 USA Toll-Free: 1-888-CBL-0505  
 E-mail: [tech@cellbiolabs.com](mailto:tech@cellbiolabs.com)  
[www.cellbiolabs.com](http://www.cellbiolabs.com)

©2004-2017: Cell Biolabs, Inc. - All rights reserved. No part of these works may be reproduced in any form without permissions in writing.