

Product Information

04511 Cellstain double staining kit

Application

Double Staining Kit is utilized for simultaneous fluorescence staining of viable and dead cells. This kit contains Calcein-AM and Propidium Iodide (PI) solutions, which stain viable and dead cells, respectively. Calcein-AM, acetoxymethyl ester of calcein, is highly lipophilic and cell membrane permeable. Though Calcein-AM itself is not a fluorescent molecule, the calcein generated from Calcein-AM by esterase in a viable cell emits strong green fluorescence (excitation: 490 nm, emission: 515 nm). Therefore, Calcein-AM only stains viable cells. On the other hand, PI, a nuclei staining dye, cannot pass through a viable cell membrane. It reaches the nucleus by passing through disordered areas of dead cell membrane, and intercalates with the DNA double helix of the cell to emit red fluorescence (excitation: 535 nm, emission: 617 nm). Since both calcein and PI-DNA can be excited with 490 nm, simultaneous monitoring of viable and dead cells is possible with a fluorescence microscope. With 545 nm excitation, only dead cells can be observed. Since optimal staining conditions differ from cell line to cell line, we recommend that a suitable concentration of PI and Calcein-AM be individually determined. Please note that PI is suspected to be highly carcinogenic; careful handling is required.

Content

Solution A: 4 vials

Solution B: 1 vial

Methods

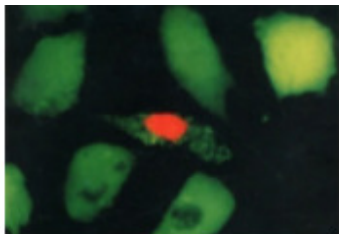
1. Add 10 μ l Solution A and 5 μ l Solution B to 5 ml PBS to prepare assay solution.^{a)}
2. Wash cells with PBS several times to remove residual esterase activity.
3. Prepare a cell suspension with PBS in which the cell density is 1×10^5 to 1×10^6 cells/ml.
4. Add 100 μ l of assay solution to cells and incubate the mixture at 37 °C for 15 min.
5. Detect fluorescence using a fluorescence microscope with 490 nm excitation for simultaneous monitoring of viable and dead cells. With 545 nm excitation, only dead cells can be observed.

a) The concentration of each reagent should be optimized. Following steps may be necessary to determine the suitable concentration of each reagent:

1. Prepare dead cells by 10 min incubation in 0.1% saponin or 0.1-0.5% digitonin or by 30 min incubation in 70% ethanol.
2. Stain dead cells with 0.1-10 μ M PI solution to find a PI concentration that stain nucleus only, does not stain cytosol.
3. Stain dead cells with 0.1-10 μ M Calcein-AM solution to find a Calcein-AM concentration that does not stain cytosol. Then stain viable cells with that Calcein-AM solution to check whether the viable cell can be stained.

Storage

Reagent solution is stable for more than 12 months at -20 °C with protection from light and moisture. Since the buffer solution of Calcein-AM is gradually hydrolyzed to generate fluorescent Calcein, the working solution is not storable. Close the bottle cap tightly after using a portion of Calcein AM solution to avoid moisture.



HeLa cell, incubated with assay solution for 15 min.

A) viable cell

B) dead cell

References

1. Kimura, K., et al., *Neurosci. Lett.*, **208**, 53 (1998).
2. Matsuse, S., et al., *J. Clin. Pathol.*, *in press*, , (1998).
3. Shimokawa, I., et al., *J. Geronto.*, **51a**, b49 (1998).
4. Yoshida, S., et al., *Clin. Nephrol.*, **49**, 273 (1998).
5. Tominaga, H., et al., *Anal. Commun.*, **36**, 47 (1999).

Precautions and Disclaimer

This product is for R&D use only, not for drug, household, or other uses. Please consult the Material Safety Data Sheet for information regarding hazards and safe handling practices.

©2014 Sigma-Aldrich Co. LLC. All rights reserved. SIGMA-ALDRICH is a trademark of Sigma-Aldrich Co. LLC, registered in the US and other countries. Sigma brand products are sold through Sigma-Aldrich, Inc. Purchaser must determine the suitability of the product(s) for their particular use. Additional terms and conditions may apply. Please see product information on the Sigma-Aldrich website at www.sigmaaldrich.com and/or on the reverse side of the invoice or packing slip.