

Zombie Violet™ Fixable Viability Kit

Catalog# / Size	423113 / 100 tests 423114 / 500 tests
Other Names	Fixable Dye, Fixable Viability Dye
Description	Zombie Violet™ is an amine-reactive fluorescent dye that is non-permeant to live cells but permeant to the cells with compromised membranes. Thus, it can be used to assess live vs. dead status of mammalian cells. Zombie Violet™ is a polar, water soluble dye providing violet fluorescence, making it suitable for multi-color detection.

Product Details

Preparation	Zombie Violet™ Fixable Viability Kit is composed of lyophilized Zombie Violet™ dye and anhydrous DMSO. For reconstitution, bring the kit to room temperature; add 100 µl of DMSO to one vial of Zombie Violet™ dye until fully dissolved. 100 tests = 1 vial of Zombie Violet™ + DMSO, 500 tests = 5 vials of Zombie Violet™ + DMSO.
Storage & Handling	<p>Store kit at -20°C upon receipt. Do not open vials until needed. Once the DMSO is added to the Zombie Violet™ dye, use immediately, or store at -20°C in a dry place and protected from light, preferably in a desiccator or in a container with desiccant for no more than one month. The unopened kit is guaranteed for six months.</p> <p>This product has a shelf-life of 12 months or less. Please contact our technical support team for lot specific CoA and expiration date inquiries of this product.</p>
Application	FC, ICFC - <i>Quality tested</i> IF - <i>Validated</i>
Recommended Usage	<p>Each lot of this product is quality control tested by immunofluorescent staining with flow cytometric analysis.</p> <p>For flow cytometry, the suggested dilution is 1:100-1:1000 for 1-10 million cells. For immunofluorescence microscopy, the suggested dilution is 1:1000. It is recommended that the reagent be titrated for optimal performance for each application, as optimal dosage varies with cell type.</p>
Excitation Laser	Violet Laser (405 nm)
Application Notes	<p>Standard Cell Staining Protocol:</p> <ol style="list-style-type: none">1. Prior to reconstitution, spin down the vial of lyophilized reagent in a microcentrifuge to ensure the reagent is at the bottom of the vial.2. For reconstitution, pre-warm the kit to room temperature; add 100 µl of DMSO to one vial of Zombie Violet™ dye and mix until fully dissolved3. Wash cells with PBS buffer (no Tris buffer and protein free).4. Dilute Zombie Violet™ dye at 1:100-1000 in PBS. Resuspend 1-10 x 10⁶ cells in diluted 100 µl Zombie Violet™ solution. To minimize background staining of live cells, titrate the amount of dye and/or number of cells per 100 µl for optimal performance. Different cell types can have a wide degree of variability in staining based on cell size and degree of cell death. <p>Note: Don't use Tris buffer as a diluent and be sure that the PBS does not contain any other protein like BSA or FBS.</p> <p>Note: The amount of dye used can also influence the ability to detect apoptotic as well as live and dead cells.</p> <ol style="list-style-type: none">5. Incubate the cells at room temperature, in the dark, for 15-30 minutes.6. Wash one time with 2 ml BioLegend's Cell Staining Buffer (Cat. No. 420201) or equivalent buffer containing serum or BSA.7. Continue performing antibody staining procedure as desired.8. Cells can be fixed with paraformaldehyde or methanol prior to permeabilization or can be analyzed without fixation. <p>No-wash Sequential Staining Protocol:</p> <ol style="list-style-type: none">1. Wash cells with PBS buffer (no Tris buffer and protein free).2. For reconstitution, pre-warm the kit to room temperature; add 100 µl of DMSO to one vial of Zombie Violet™ dye and mix until fully dissolved3. Determine the total µl volume of antibody cocktail previously titrated and optimized for the assay that will be added to each vial/well of cells based on a final volume of 100 µl. Subtract that antibody volume from the 100 µl total staining volume intended for the assay. In the remaining volume, dilute Zombie Violet™ dye at 1:100-1000 in PBS as determined by prior optimization at that volume. For example, if you are adding 20 µl of antibody cocktail for a 100 µl total staining volume, use 80 µl of Zombie Violet™ solution. Resuspend 1-10 x 10⁶ cells in the appropriate

volume of Zombie Violet™ solution. Different cell types can have a wide degree of variability in staining based on cell size and degree of cell death.

Note: Don't use Tris buffer as a diluent and be sure that the PBS does not contain any other protein like BSA or FBS.

Note: The amount of dye used can also influence the ability to detect apoptotic as well as live and dead cells.

4. Incubate for 10-15 minutes at RT, protected from light. Without washing the cells, add the cell surface antibody cocktail and incubate for another 15-20 minutes.
5. Add 1-2 mL Cell Staining Buffer (Cat. No. 420201) or equivalent buffer containing BSA or serum. Centrifuge to pellet.
6. Continue with normal fixation and permeabilization procedure. If planning to skip fixation and analyze cells live, complete an additional wash step to minimize any unnecessary background of the live cells.

Notes: If the cell type in use cannot tolerate a protein-free environment, then titrate the Zombie Violet™ dye in the presence of the same amount of BSA/serum as will be present in the antibody staining procedure. A higher amount of Zombie Violet™ may be required since the BSA/serum will react with and bind up some proportion of the Zombie Violet™.

Zombie Violet™ dye is excited by the Violet laser (405 nm) and has fluorescence emission maximum at 423 nm. If using in a multi-color panel design, filter optimization may be required depending on other fluorophores used. Zombie Violet™ dye has similar emission to BV421.

Product Citations

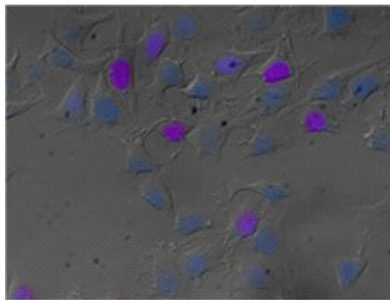
1. Jones A, et al. 2015. J Immunol. 195: 1489-1497. PubMed
2. Nath A, et al. 2015. Sci Rep. 5: 14752. PubMed
3. Kanemaru K, et al. 2015. PLoS One. 10: 0144436. PubMed
4. Donegan J, et al. 2016. Mol Psychiatry. 10.1038/mp.2016.121. PubMed
5. Arumugam T, et al. 2016. J Cereb Blood Flow Metab. 10.1177/0271678X16661201. PubMed
6. Babon J, et al. 2016. Nat Med. 10.1038/nm.4203. PubMed
7. Rothchild A, et al. 2016. Proc Natl Acad Sci U S A. 113: E6172 - E6181. PubMed
8. Maillat A, Tan K, and Brunham L. 2017. Curr Protoc Toxicol. 10.1002/cptx.30. PubMed
9. Surdziel E, et al. 2017. PLoS One. 10.1371/journal.pone.0183679. PubMed
10. Wang Z, et al. 2017. Inflammation. 10.1016/j.chom.2017.04.011. PubMed
11. Enyedi K, et al. 2017. PLoS One. 12(6):e0178632. PubMed
12. Bankoti R, et al. 2017. Sci Rep. 10.1038/s41598-017-12171-3. PubMed

Antigen Details

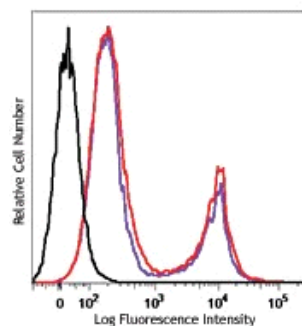
Biology Area

Apoptosis/Tumor Suppressors/Cell Death, Cell Biology, Neuroscience

Product Data



HeLa cells were treated with 20% ETOH for 20 seconds, washed twice with PBS, and then were left to recover for five minutes with cell culture media in 37°C. The cells were stained with Zombie Violet™ (1:1000) (magenta) for 15 minutes and then fixed with 1% paraformaldehyde (PFA) for ten minutes. Nuclei were counterstained with DRAQ5 (blue) for five minutes. The image was captured with 40X objective.



One day old C57BL/6 mouse splenocytes were stained with Zombie Violet™ and analyzed before fixation (purple) or after fixation and permeabilization (red). Cells alone, without Zombie Violet™ staining, are indicated in black.

For research use only. Not for diagnostic use. Not for resale. BioLegend will not be held responsible for patent infringement or other violations that may occur with the use of our products.

*These products may be covered by one or more Limited Use Label Licenses (see the BioLegend Catalog or our website, www.biolegend.com/ordering#license). BioLegend products may not be transferred to third parties, resold, modified for resale, or used to

manufacture commercial products, reverse engineer functionally similar materials, or to provide a service to third parties without written approval of BioLegend. By use of these products you accept the terms and conditions of all applicable Limited Use Label Licenses. Unless otherwise indicated, these products are for research use only and are not intended for human or animal diagnostic, therapeutic or commercial use.

8999 BioLegend Way, San Diego, CA 92121 www.biolegend.com
Toll-Free Phone: 1-877-Bio-Legend (246-5343) Phone: (858) 768-5800 Fax: (877) 455-9587