

**bs-1970R****[Primary Antibody]**


www.biossusa.com  
 support@biossusa.com  
 800.501.7654 [DOMESTIC]  
 +1.781.569.5821 [INTERNATIONAL]

## LAMP-1 Polyclonal Antibody

### DATASHEET

**Host:** Rabbit

**Target Protein:** LAMP-1

**Immunogen** 301-417/417

**Range:**

**Clonality:** Polyclonal

**Isotype:** IgG

**Entrez Gene:** [3916](#)

**Swiss Prot:** [P11279](#)

**Source:** KLH conjugated synthetic peptide derived from human LAMP-1

**Purification:** Purified by Protein A.

**Storage Buffer:** Aqueous buffered solution containing 1% BSA, 50% glycerol and 0.09% sodium azide.

**Storage** Store at -20°C for 12 months..

**Condition:**

**Background:** Lysosome associated membrane protein (LAMP1), also known as Igp120 or IgpA, is a type 1 integral membrane protein that is transported from trans Golgi networks to endosomes and then lysosomes. Upon cell activation, LAMP1 transfer to the plasma membrane is dependent on a carboxyl terminal tyrosine based motif (YXXI). Perturbation in the spacing between the tyrosine based motif relative to the membrane abolishes lysosome localization of LAMP1. This mutant protein then cycles between the plasma membrane and the endosome. Cell surface LAMP1 and LAMP2 have been shown to promote adhesion of human peripheral blood mononuclear cells (PBMC) to vascular endothelium, therefore they are possibly involved in the adhesion of PBMCs to the site of inflammation.

**Size:** 100ul

**Concentration:** 1ug/ul

**Applications:** WB(1:300-1000)  
 ELISA(1:500-1000)  
 FCM(1:20-100)  
 IHC-P(1:200-400)  
 IHC-F(1:100-500)  
 IF(IHC-P)(1:50-200)  
 IF(IHC-F)(1:50-200)  
 IF(ICC)(1:50-200)  
 ICC(1:100-500)

**Cross Reactive** Human  
**Species:** Mouse  
 Rat

For research use only. Not intended for diagnostic or therapeutic use.

### PRODUCT SPECIFIC PUBLICATIONS

- Jeong, Keun-Yeong, et al. "Combination of macrophage inflammatory protein 1 alpha with existing therapies to enhance the antitumor effects on murine hepatoma." *Journal of Radiation Research* (2014): rru077.[Read more>>](#)
- Guo, Hong, et al. "Niemann Pick type C2 deficiency impairs autophagy-lysosomal activity, mitochondrial function, and TLR signaling in adipocytes." *Journal of Lipid Research* (2016): jlr-M066522.[Read more>>](#)
- Sun, Ming-Xia, et al. "Porcine reproductive and respiratory syndrome virus induces autophagy to promote virus replication." *Autophagy* 8.10 (2012): 1434-1447.[Read more>>](#)
- Bechor, Sapir, et al. "Adipose tissue conditioned media support macrophage lipid-droplet biogenesis by interfering with autophagic flux." *Biochimica et Biophysica Acta (BBA)-Molecular and Cell Biology of Lipids* (2017).[Read more>>](#)
- Pan, Pan, et al. "Black Raspberries Enhance Natural Killer Cell Infiltration into the Colon and Suppress the Progression of Colorectal Cancer." *Frontiers in Immunology* 8 (2017): 997.[Read more>>](#)
- Dixit, Saurabh, et al. "Caveolin-mediated endocytosis of the Chlamydia M278 outer membrane peptide encapsulated in poly (lactic acid)-Poly (ethylene glycol) nanoparticles by mouse primary dendritic cells enhances specific immune effectors mediated by MHC class II and CD4+ T cells." *Biomaterials* (2017).[Read more>>](#)

- Pan et al. Black Raspberries Enhance Natural Killer Cell Infiltration into the Colon and Suppress the Progression of Colorectal Cancer. (2017) *Front.Immunol.* 8:997 [Read more>>](#)
- Goreczny et al. Hic-5 regulates fibrillar adhesion formation to control tumor extracellular matrix remodeling through interaction with tensin1. (2018) *Oncogene.* 37:1699-1713 [Read more>>](#)

---

— VALIDATION IMAGES —

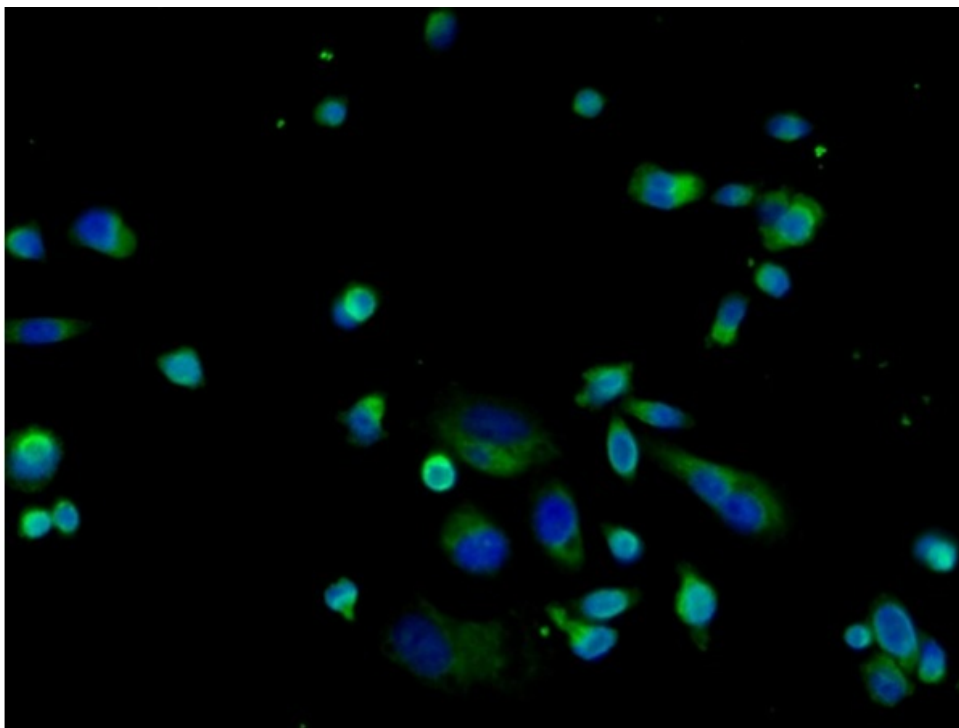
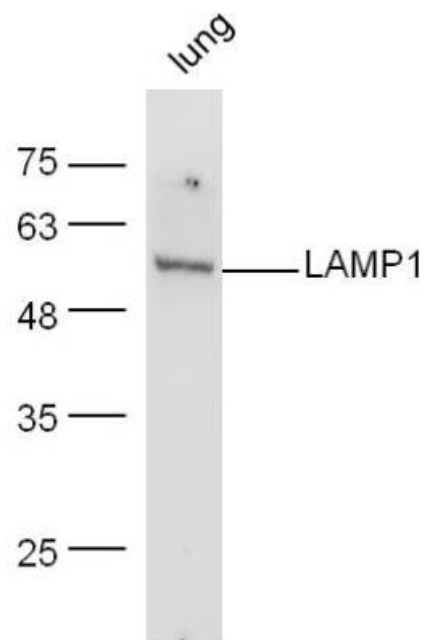
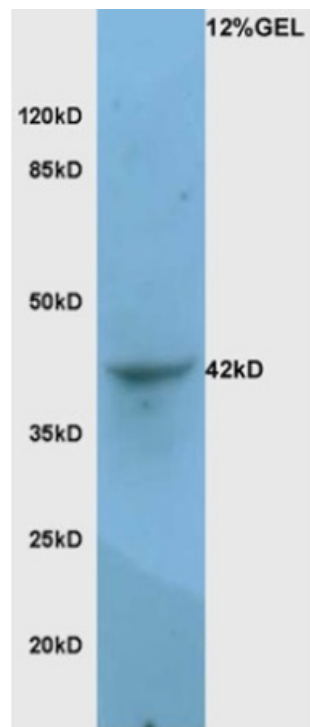


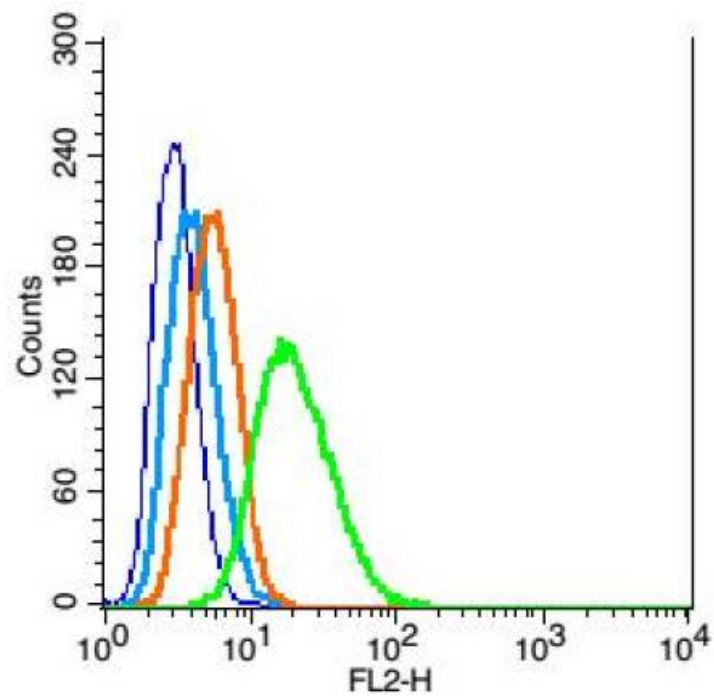
Image provided by One World Lab validation initiative. PC3 cells were stained with LAMP-1 Polyclonal Antibody, Unconjugated (bs-1970R) at [1:100] in PBS and incubated for one hour at room temperature, followed by secondary antibody incubation, DAPI staining of the nuclei and detection.



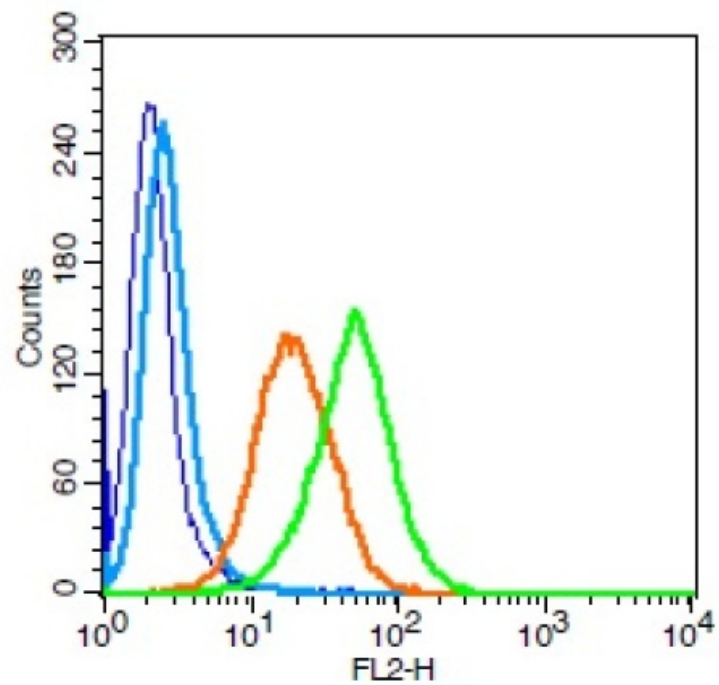
Mouse lung lysates probed with Rabbit Anti-LAMP-1 Polyclonal Antibody, Unconjugated (bs-1970R) at 1:300 overnight at 4°C. Followed by conjugation to secondary antibody (bs-0295G-HRP) at 1:500 for 90 min at 37°C.



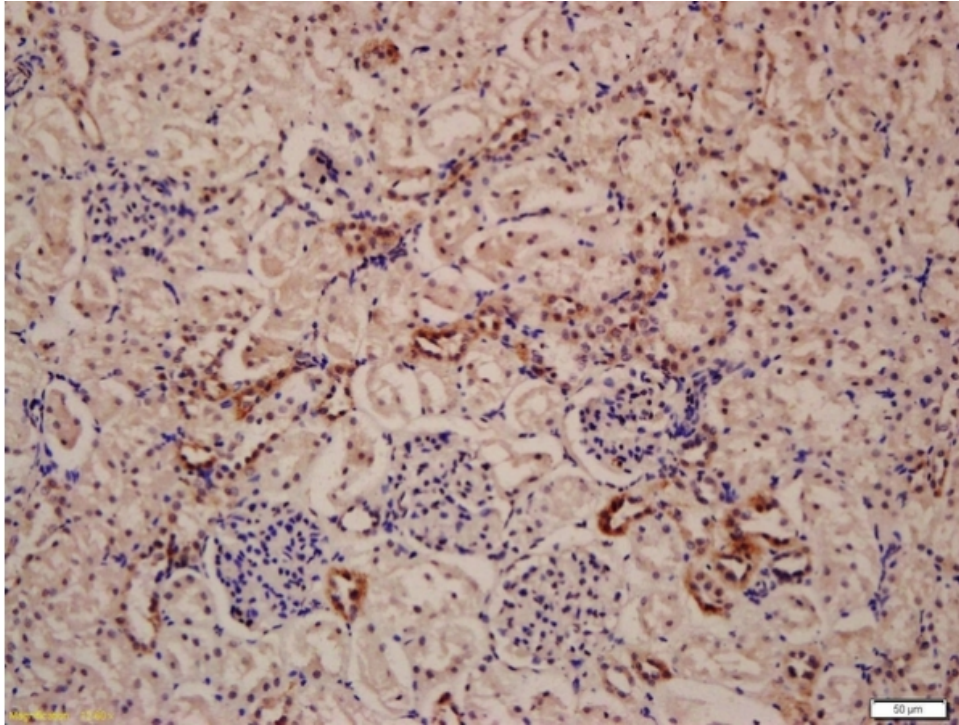
Mouse lung lysates probed with Rabbit Anti-LAMP-1 Polyclonal Antibody, Unconjugated (bs-1970R) at 1:200 overnight at 4°C. Followed by conjugation to secondary antibody (bs-0295G-HRP) at 1:3000 for 90 min at 37°C.



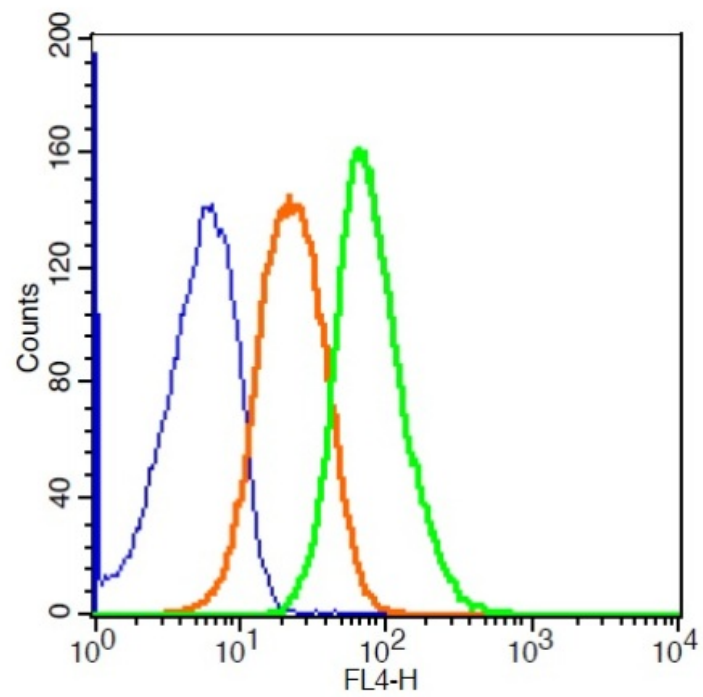
RSC96 probed with LAMP-1 Polyclonal Antibody, Unconjugated (bs-1970R) at 1:100 for 30 minutes followed by incubation with a conjugated secondary (PE Conjugated) (green) for 30 minutes compared to control cells (blue), secondary only (light blue) and isotype control (orange).



Human U937 cells probed with LAMP-1 Polyclonal Antibody, Unconjugated (bs-1970R) (green) at 1:100 for 30 minutes followed by a PE conjugated secondary antibody compared to unstained cells (blue), secondary only (light blue), and isotype control (orange).

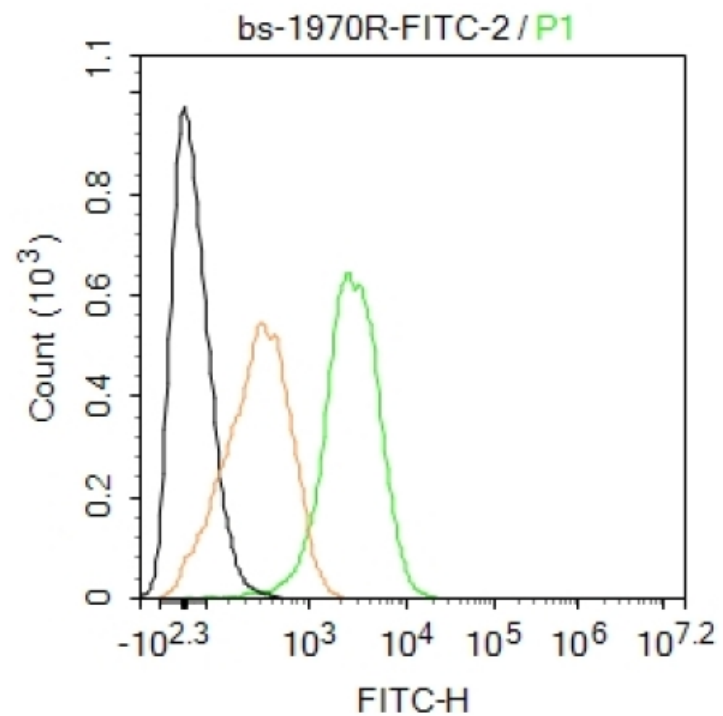


Formalin-fixed and paraffin embedded rat kidney labeled with Anti-LAMP-1 Polyclonal Antibody, Unconjugated (bs-1970R) at 1:200 followed by conjugation to the secondary antibody and DAB staining

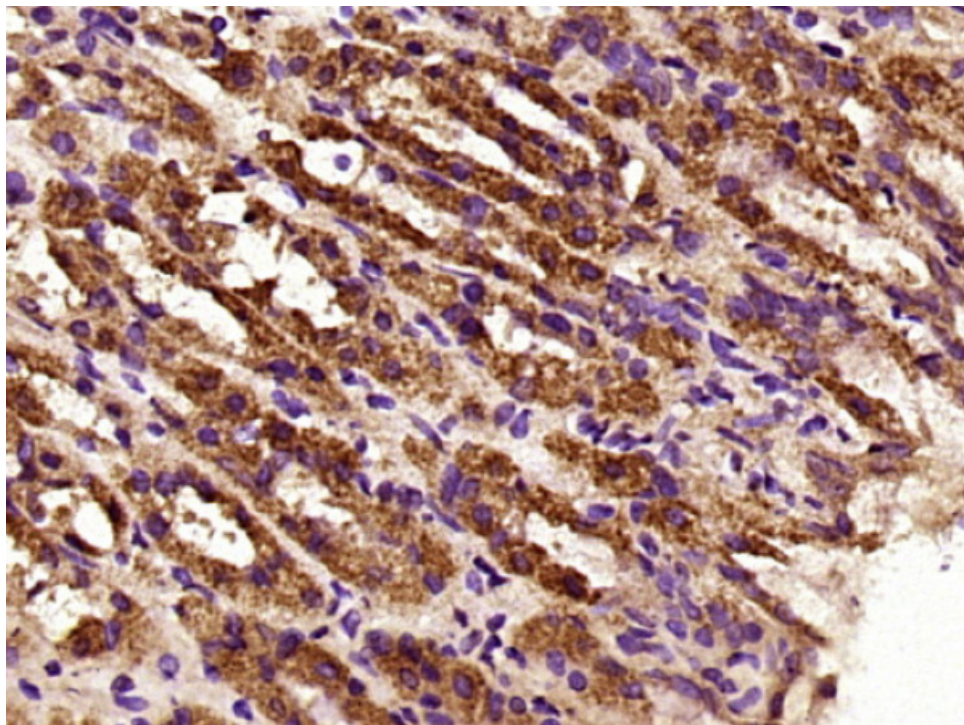


RSC96 cells probed with LAMP-1 Polyclonal Antibody, ALEXA FLUOR® 647 Conjugated (bs-1970R-A647) at 1:100 for 30 minutes compared to control cells (blue) and isotype control (orange).

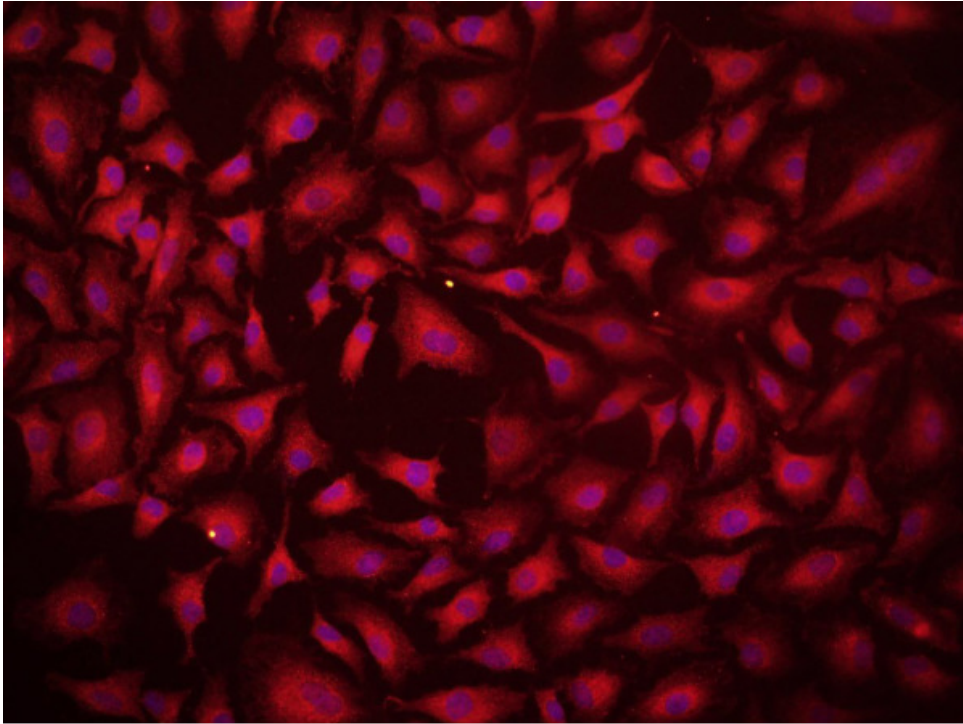




Jurkat cells were fixed with 4% PFA for 10min at room temperature, permeabilized with 90% ice-cold methanol for 20 min at  $-20^{\circ}\text{C}$ , and incubated in 5% BSA blocking buffer for 30 min at room temperature. Cells were then stained with LAMP1 Antibody(bs-1970R-FITC) at 1:50 dilution in blocking buffer and incubated for 30 min at room temperature, washed twice with 2% BSA in PBS. Acquisitions of 20,000 events were performed. Cells stained with primary antibody (green), and isotype control (orange).



Paraformaldehyde-fixed, paraffin embedded Rat stomach; Antigen retrieval by boiling in sodium citrate buffer (pH6.0) for 15min; Block endogenous peroxidase by 3% hydrogen peroxide for 20 minutes; Blocking buffer (normal goat serum) at 37°C for 30min; Antibody incubation with LAMP-1 Polyclonal Antibody, Unconjugated (bs-1970R) at 1:400 overnight at 4°C, DAB staining.



A549 cells were stained with LAMP-1 Polyclonal Antibody, Unconjugated(bs-1970R) at 1:100 in PBS and incubated for two hours at 37°C followed by Goat Anti-Rabbit IgG (H+L) cy3 conjugated secondary antibody. DAPI staining of the nucleus was done and then detected.